

C12500.71E

Street:

MONUMENT DRIVE

X-Street:
OFFICIAL USE ONLY

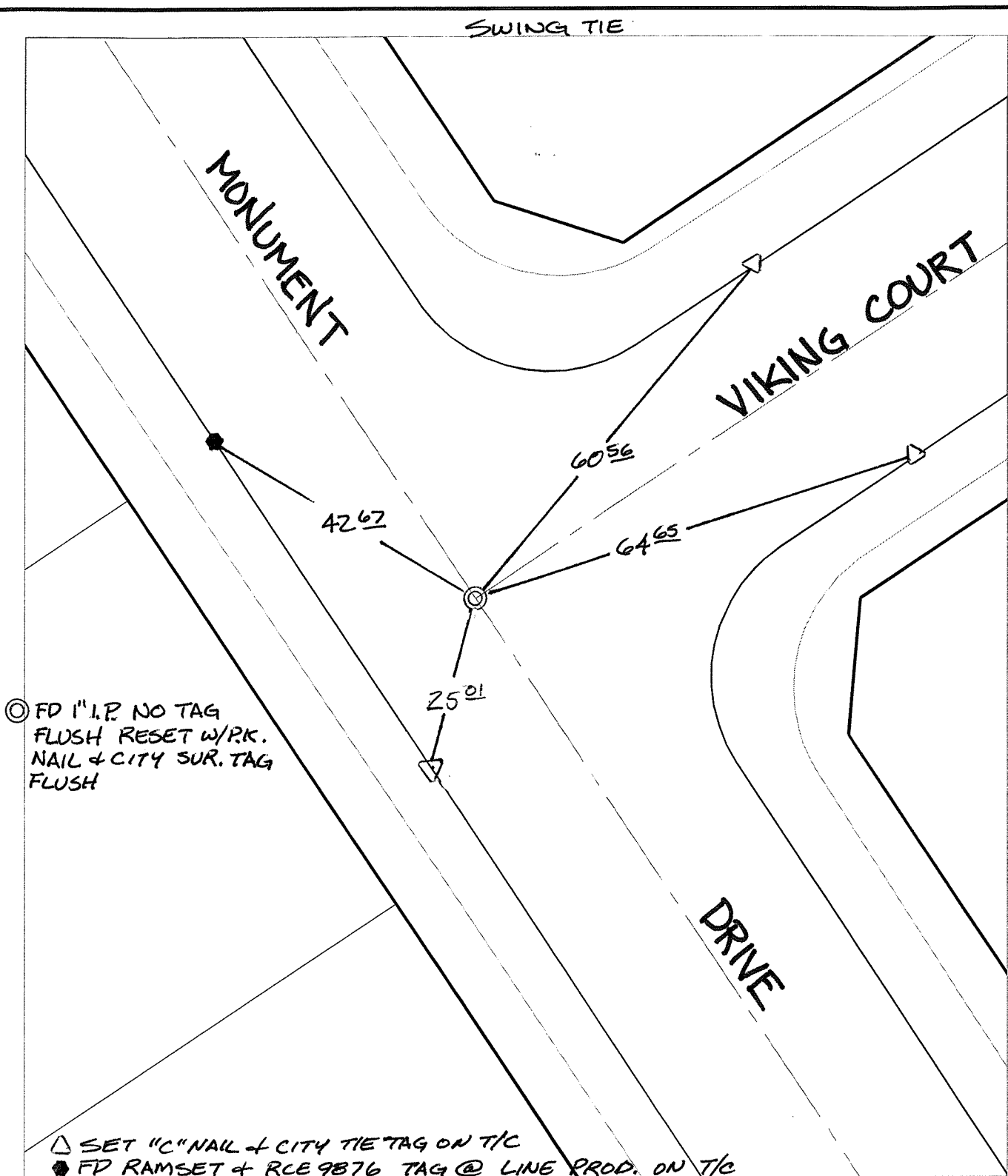
VIKING COURT

SWING TIE

MONUMENT

VIKING COURT

DRIVE



⊙ FD 1" I.P. NO TAG
FLUSH RESET W/PK.
NAIL & CITY SUR. TAG
FLUSH

△ SET "C" NAIL & CITY TIE TAG ON T/C
● FD RAMSET & RCE 9876 TAG @ LINE PROD. ON T/C

- × FD. Ramset Nail on T/C ● FD. LD. & TK. on T/C
- FD. "C" Nail on T/C ○ Set LD. & TK. on T/C

P.K. and City Engineer tag to be set @
surface after street construction is
complete. (If possible)

Scale: 1" = 20'
 Date: 02/16/09
 Drawn by: pw
 F.B.:
 TR-Sec: T3SR5W-3

OFFICIAL TIE PLAT

CITY OF RIVERSIDE

*These ties are for the purpose of perpetuating the found
 monumentation. No claim is made as to the relationship of
 the points or lines shown hereon to true boundary locations.*



Sheet 1 of 1
 Cadme MB: 69-1