

C12501.71E

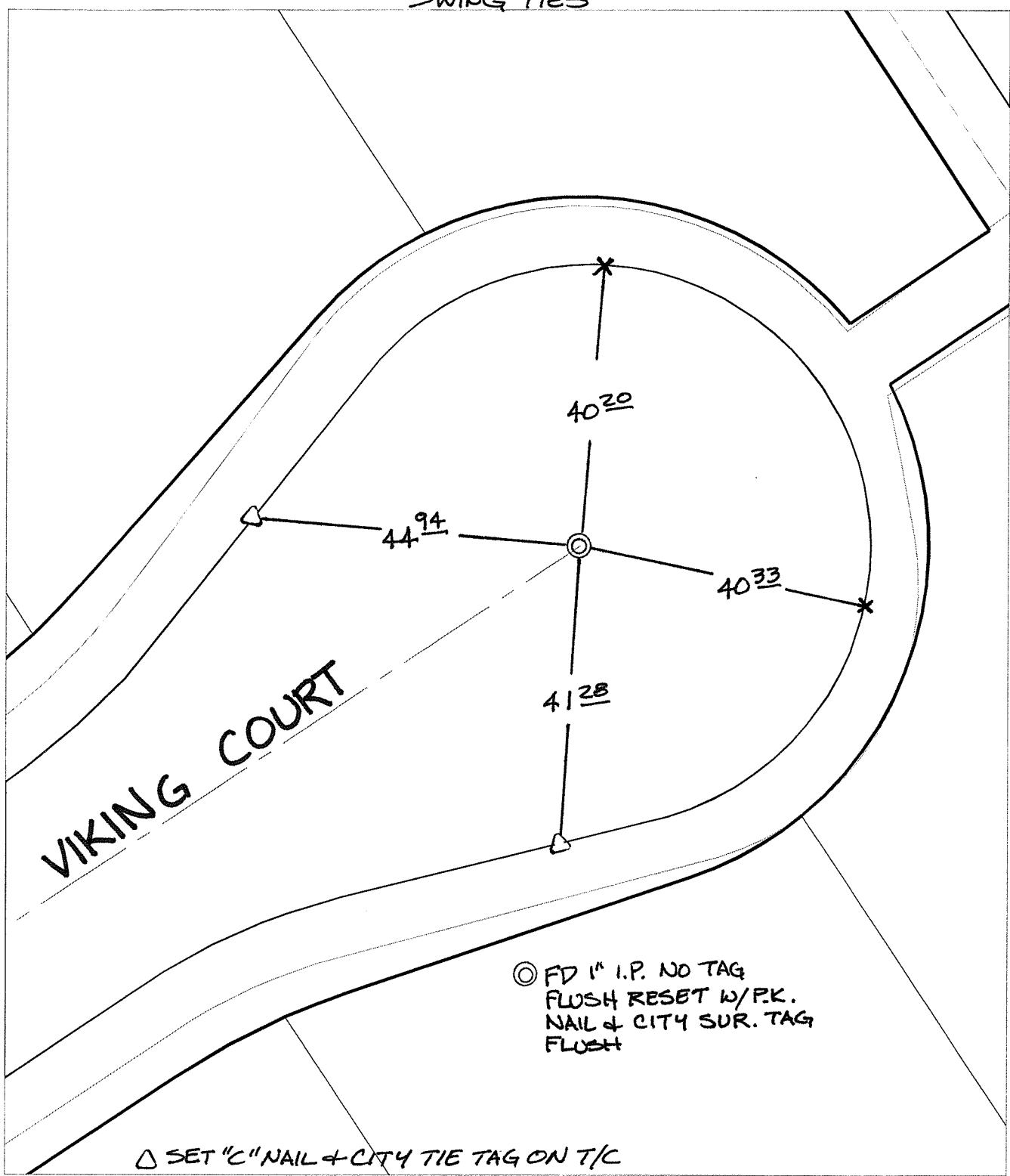
Street:

VIKING COURT

X-Street:  
OFFICIAL USE ONLY

CUL-DE-SAC

SWING TIES



○ FD 1" I.P. NO TAG  
 FLUSH RESET W/P.K.  
 NAIL & CITY SUR. TAG  
 FLUSH


△ SET "C" NAIL & CITY TIE TAG ON T/C

- ✕ FD. Ramset Nail on T/C
  - FD. LD. & TK. on T/C
  - FD. "C" Nail on T/C
  - Set LD. & TK. on T/C
- P.K. and City Engineer tag to be set @ surface after street construction is complete. (If possible)

Scale: 1" = 20'  
 Date: 02/17/09  
 Drawn by: pw  
 F.B.:  
 TR-Sec: T3SR5W-3

**OFFICIAL TIE PLAT**  
**CITY OF RIVERSIDE**

*These ties are for the purpose of perpetuating the found monumentation. No claim is made as to the relationship of the points or lines shown hereon to true boundary locations.*



Sheet 1 of 1  
 Cadme MB: 69-1