

C12508.71F

Street:

NEW MEXICO DRIVE

X-Street:

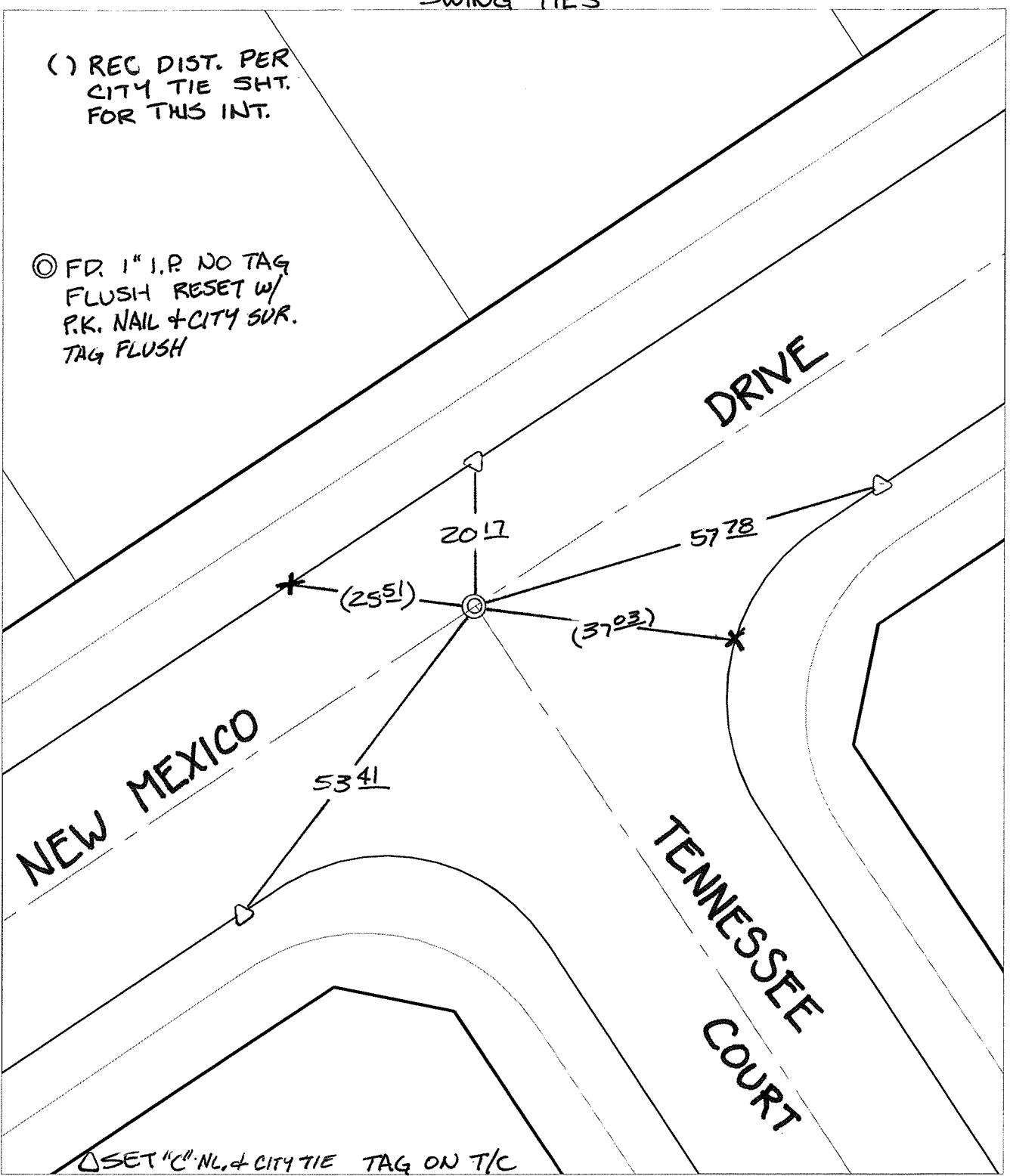
TENNESSEE COURT

OFFICIAL USE ONLY

SWING TIES

() REC DIST. PER CITY TIE SHT. FOR THIS INT.

⊙ FD. 1" I.P. NO TAG FLUSH RESET W/ P.K. NAIL & CITY SUR. TAG FLUSH



- × FD. Ramset Nail on T/C ● FD. LD. & TK. on T/C
- FD. "C" Nail on T/C ○ Set LD. & TK. on T/C

P.K. and City Engineer tag to be set @ surface after street construction is complete. (If possible)

Scale: 1" = 20'

Date: 12/15/08

Drawn by: pw

F.B.:

TR-Sec: T3SR5W-3

OFFICIAL TIE PLAT

CITY OF RIVERSIDE

These ties are for the purpose of perpetuating the found monumentation. No claim is made as to the relationship of the points or lines shown hereon to true boundary locations.



Sheet 1 of 1

Cadme MB: 68-2