

C12513. 71E

Street:

WISCONSIN COURT

X-Street:

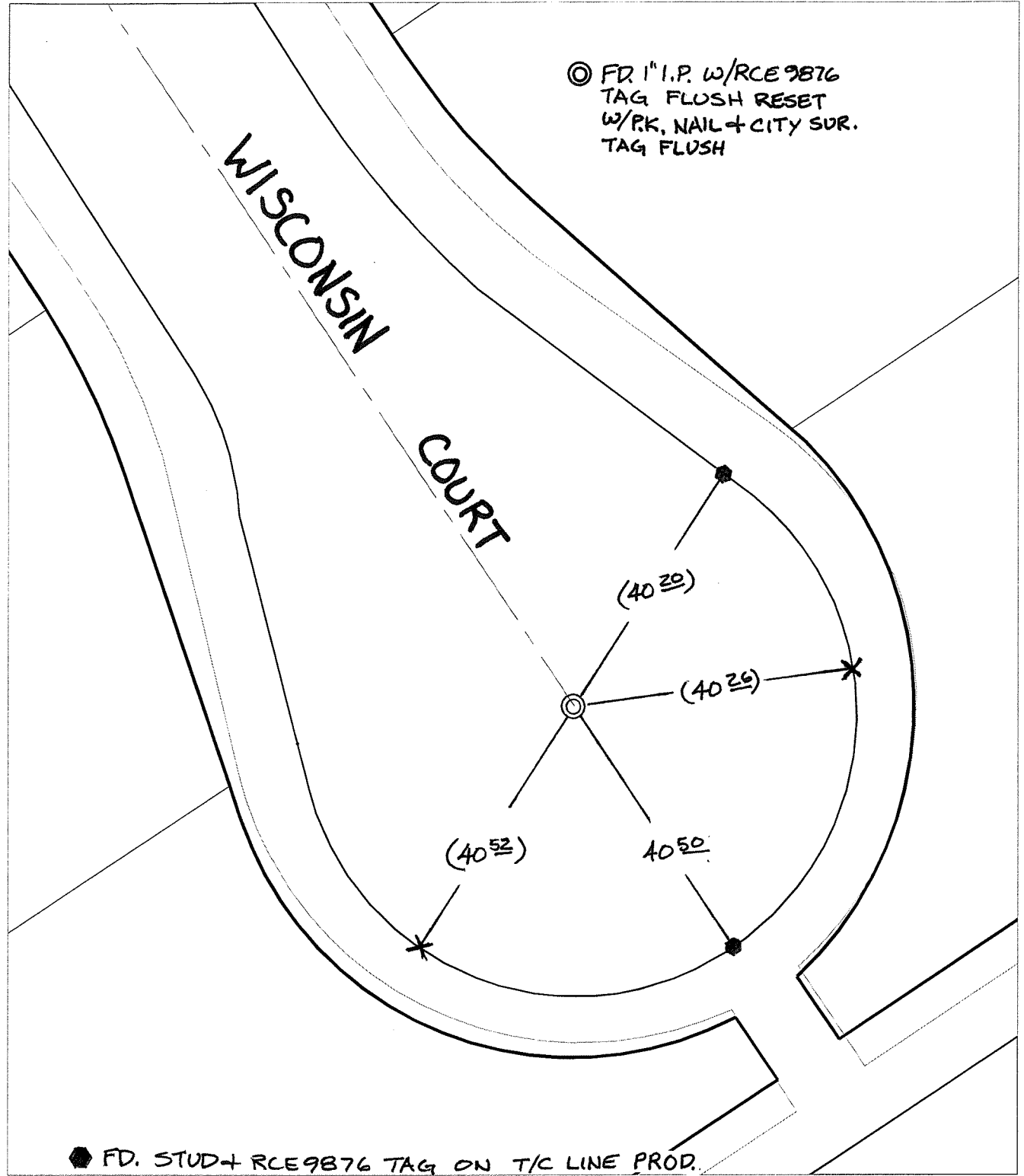
CUL-DE-SAC

OFFICIAL USE ONLY

TRANSIT + SWING TIES

⊙ FD 1" I.P. W/RCE 9876
TAG FLUSH RESET
W/PK, NAIL + CITY SUR.
TAG FLUSH

WISCONSIN
COURT



● FD. STUD + RCE 9876 TAG ON T/C LINE PROD.

- ⊗ FD. Ramset Nail on T/C
- FD. LD. & TK. on T/C
- FD. "C" Nail on T/C
- Set LD. & TK. on T/C

P.K. and City Engineer tag to be set @ surface after street construction is complete. (If possible)

Scale: 1" = 20'

Date: 02/16/09

Drawn by: pw

F.B.:

TR-Sec: T3SR5W-3

OFFICIAL TIE PLAT

CITY OF RIVERSIDE

These ties are for the purpose of perpetuating the found monumentation. No claim is made as to the relationship of the points or lines shown hereon to true boundary locations.



Sheet 1 of 1

Cadme MB: 68-2