

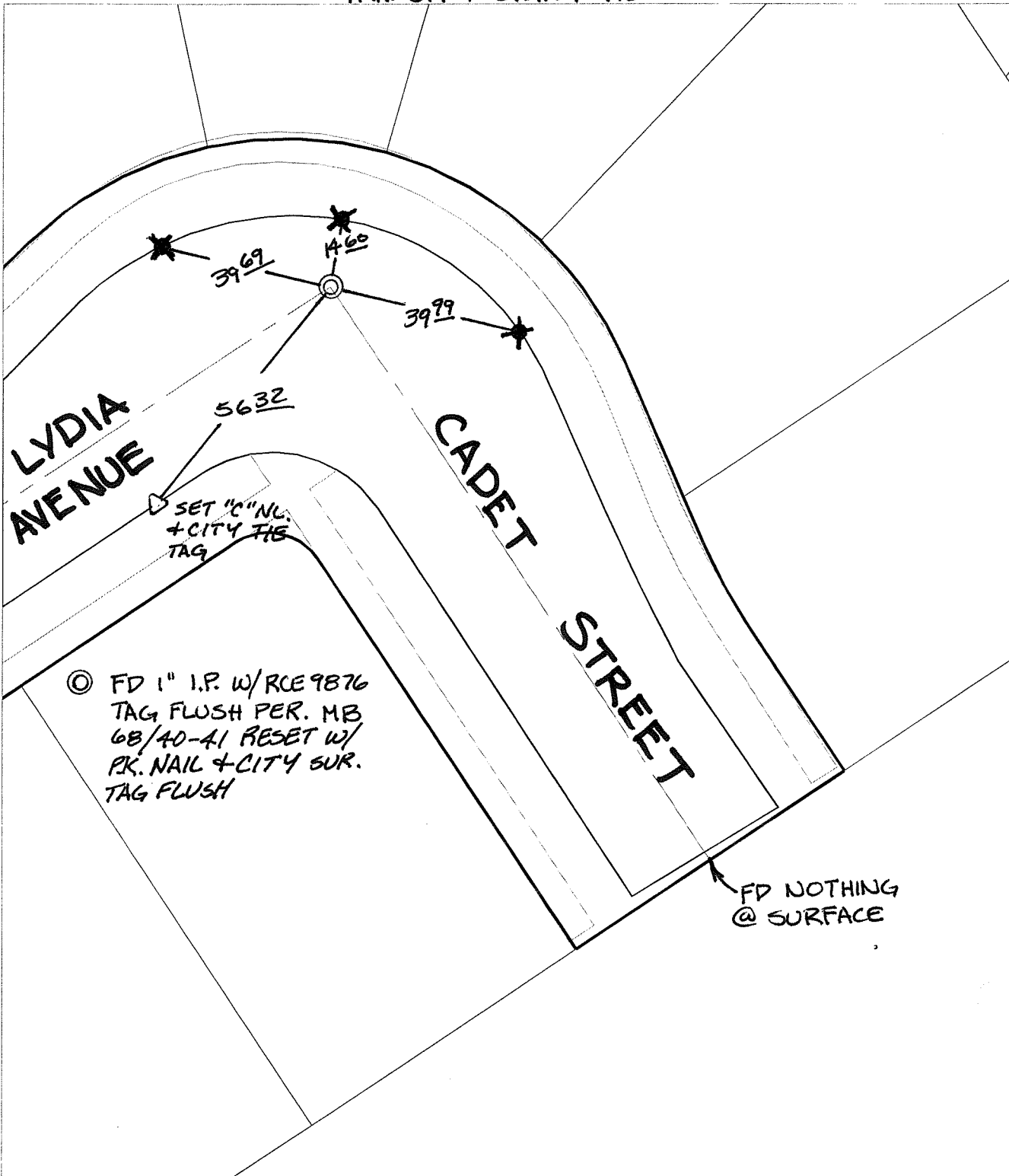
Street:

LYDIA AVENUE

X-Street:  
OFFICIAL USE ONLY

CADET STREET

TRANSIT + SWING TIES



- ✕ FD. Ramset Nail on T/C      ● FD. LD. & TK. on T/C
- FD. "C" Nail on T/C      ○ Set LD. & TK. on T/C

P.K. and City Engineer tag to be set @ surface after street construction is complete. (If possible)

Scale: 1" = 30'

Date: 02/18/09

Drawn by: pw

F.B.:

TR-Sec: T3SR5W-10

## OFFICIAL TIE PLAT

### CITY OF RIVERSIDE

*These ties are for the purpose of perpetuating the found monumentation. No claim is made as to the relationship of the points or lines shown hereon to true boundary locations.*



Sheet 1 of 1

Cadme MB: 68-2