

C12521. TIF

Street:

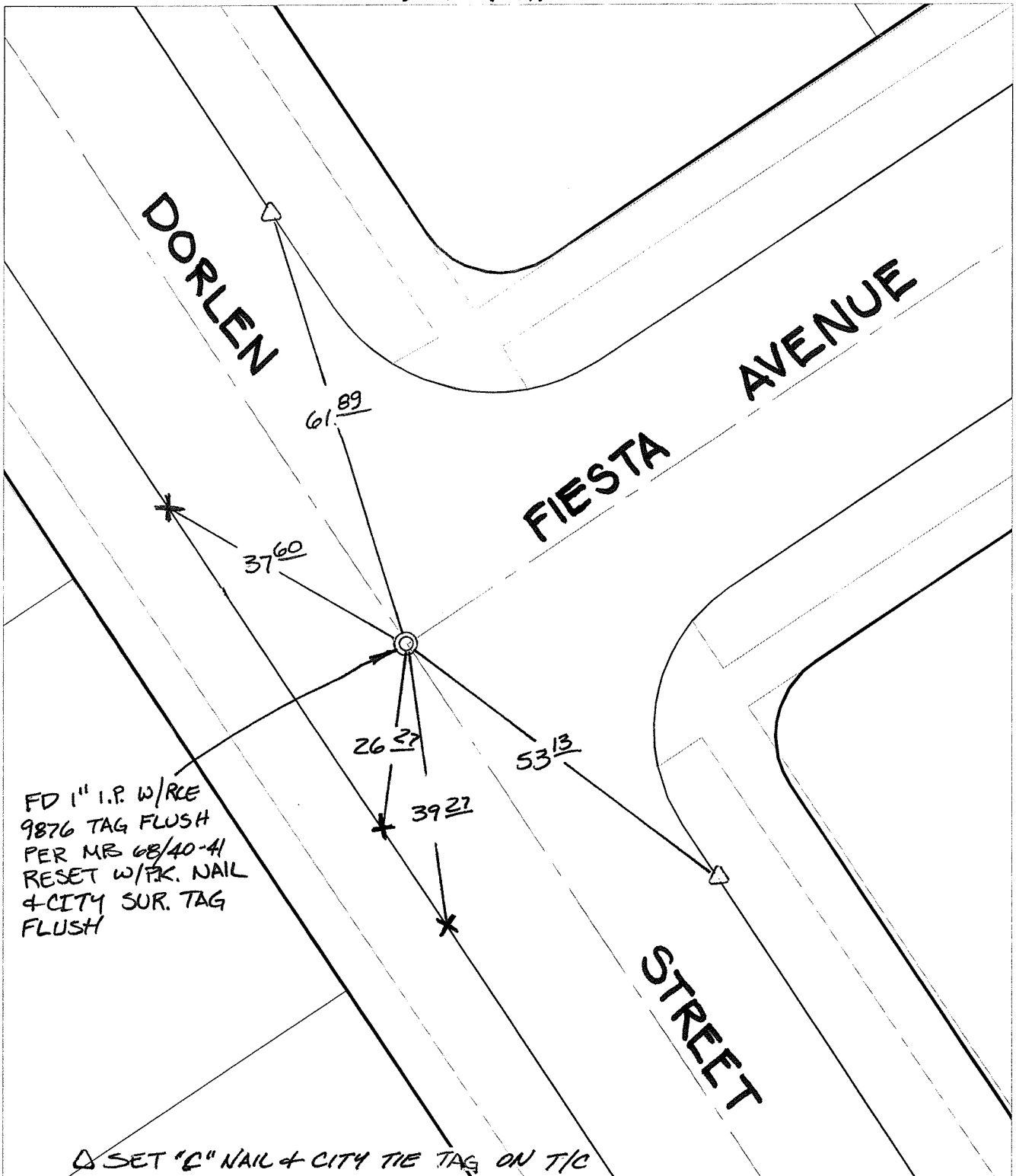
FIESTA AVENUE

OFFICIAL USE ONLY

X-Street:

DORLEN STREET

SWING TIES



FD 1" I.P. W/RCE  
 9876 TAG FLUSH  
 PER MR 08/40-41  
 RESET W/PK. NAIL  
 & CITY SUR. TAG  
 FLUSH

△ SET "C" NAIL & CITY TIE TAG ON T/C

- ✕ FD. Ramset Nail on T/C      ● FD. LD. & TK. on T/C
- FD. "C" Nail on T/C      ○ Set LD. & TK. on T/C

P.K. and City Engineer tag to be set @  
 surface after street construction is  
 complete. (If possible)

Scale: 1" = 20'

Date: 02/17/09

Drawn by: pw

F.B.:

TR-Sec: T3SR5W-3

## OFFICIAL TIE PLAT

### CITY OF RIVERSIDE

*These ties are for the purpose of perpetuating the found monumentation. No claim is made as to the relationship of the points or lines shown hereon to true boundary locations.*



Sheet 1 of 1

Cadme MB: 68-2