

C12526.ME

Street:

EVANS STREET

X-Street:

DOLORES STREET

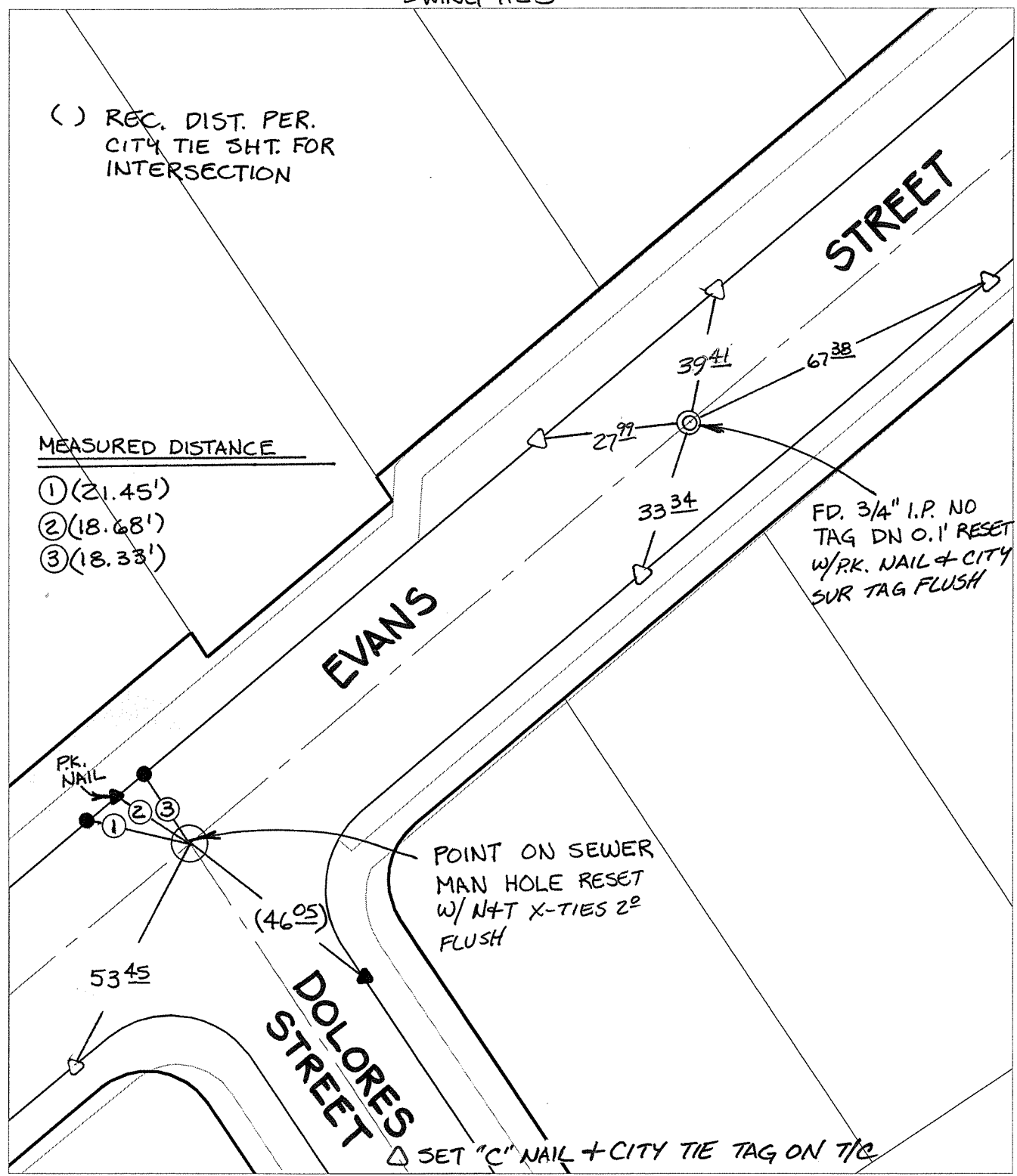
OFFICIAL USE ONLY

SWING TIES

( ) REC. DIST. PER. CITY TIE SHT. FOR INTERSECTION

MEASURED DISTANCE

- ① (21.45')
- ② (18.68')
- ③ (18.33')



- ✕ FD. Ramset Nail on T/C
- FD. LD. & TK. on T/C
- FD. "C" Nail on T/C
- Set LD. & TK. on T/C
- P.K. and City Engineer tag to be set @ surface after street construction is complete. (If possible)

Scale: 1" = 30'  
 Date: 03/06/09  
 Drawn by: pw  
 F.B.:  
 TR-Sec: T3SR5W-3

**OFFICIAL TIE PLAT**  
**CITY OF RIVERSIDE**

*These ties are for the purpose of perpetuating the found monumentation. No claim is made as to the relationship of the points or lines shown hereon to true boundary locations.*

Sheet 1 of 1  
 Cadme MB: 53-8