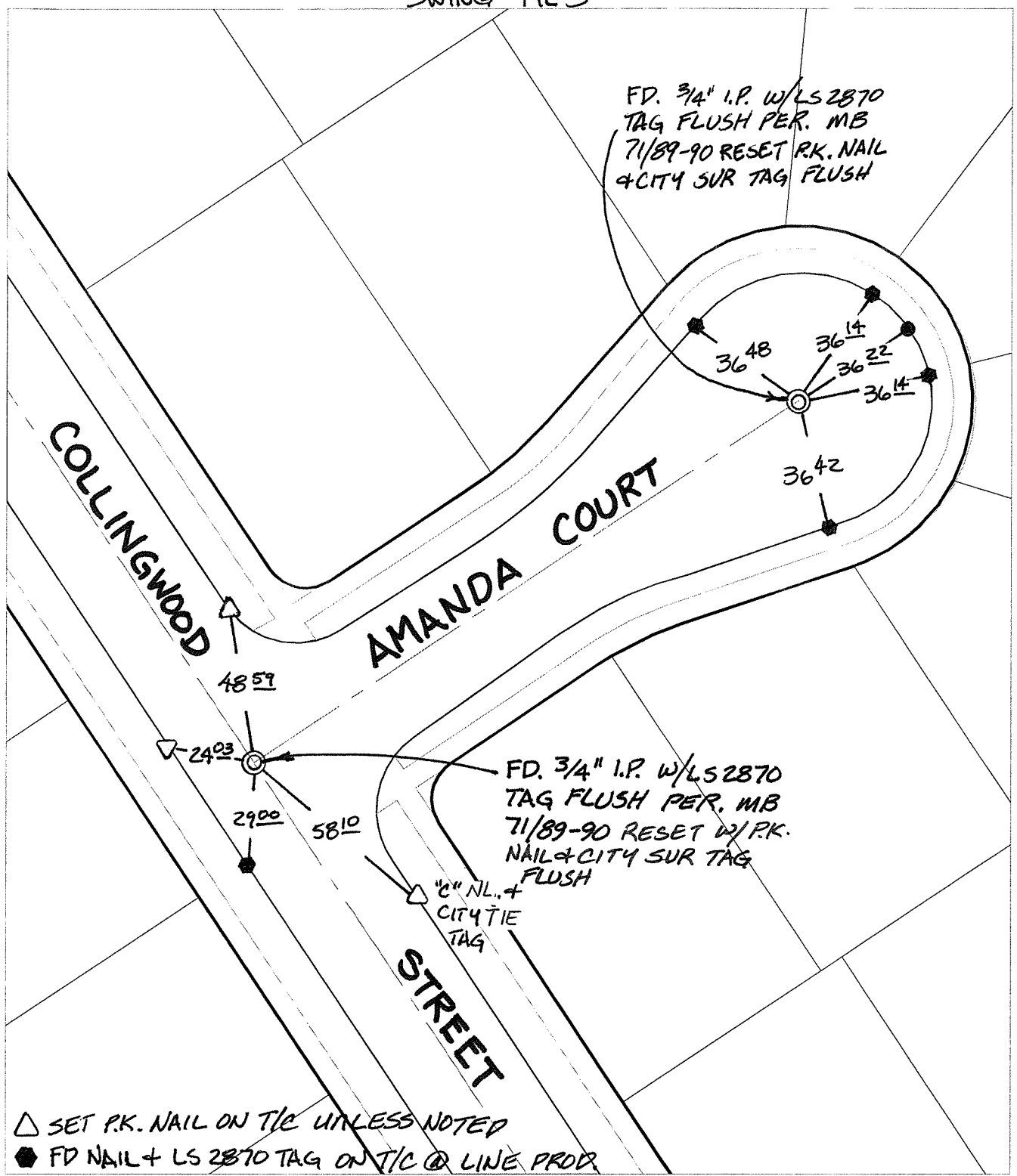


C12531, T1E

Street: COLLINGWOOD STREET X-Street: AMANDA COURT
OFFICIAL USE ONLY

SWING TIES

FD. 3/4" I.P. W/LS 2870
TAG FLUSH PER. MB
7/1/89-90 RESET P.K. NAIL
& CITY SUR TAG FLUSH



- △ SET P.K. NAIL ON T/C UNLESS NOTED
- FD NAIL + LS 2870 TAG ON T/C @ LINE PROD.

- × FD. Ramset Nail on T/C
 - FD. LD. & TK. on T/C
 - FD. "C" Nail on T/C
 - Set LD. & TK. on T/C
- P.K. and City Engineer tag to be set @ surface after street construction is complete. (If possible)

Scale: 1" = 40'
 Date: 12/17/08
 Drawn by: pw
 F.B.:
 TR-Sec: T3SR5W-10

OFFICIAL TIE PLAT

CITY OF RIVERSIDE

These ties are for the purpose of perpetuating the found monumentation. No claim is made as to the relationship of the points or lines shown hereon to true boundary locations.



Sheet 1 of 1
 Cadme MB: 68-4