

Street:

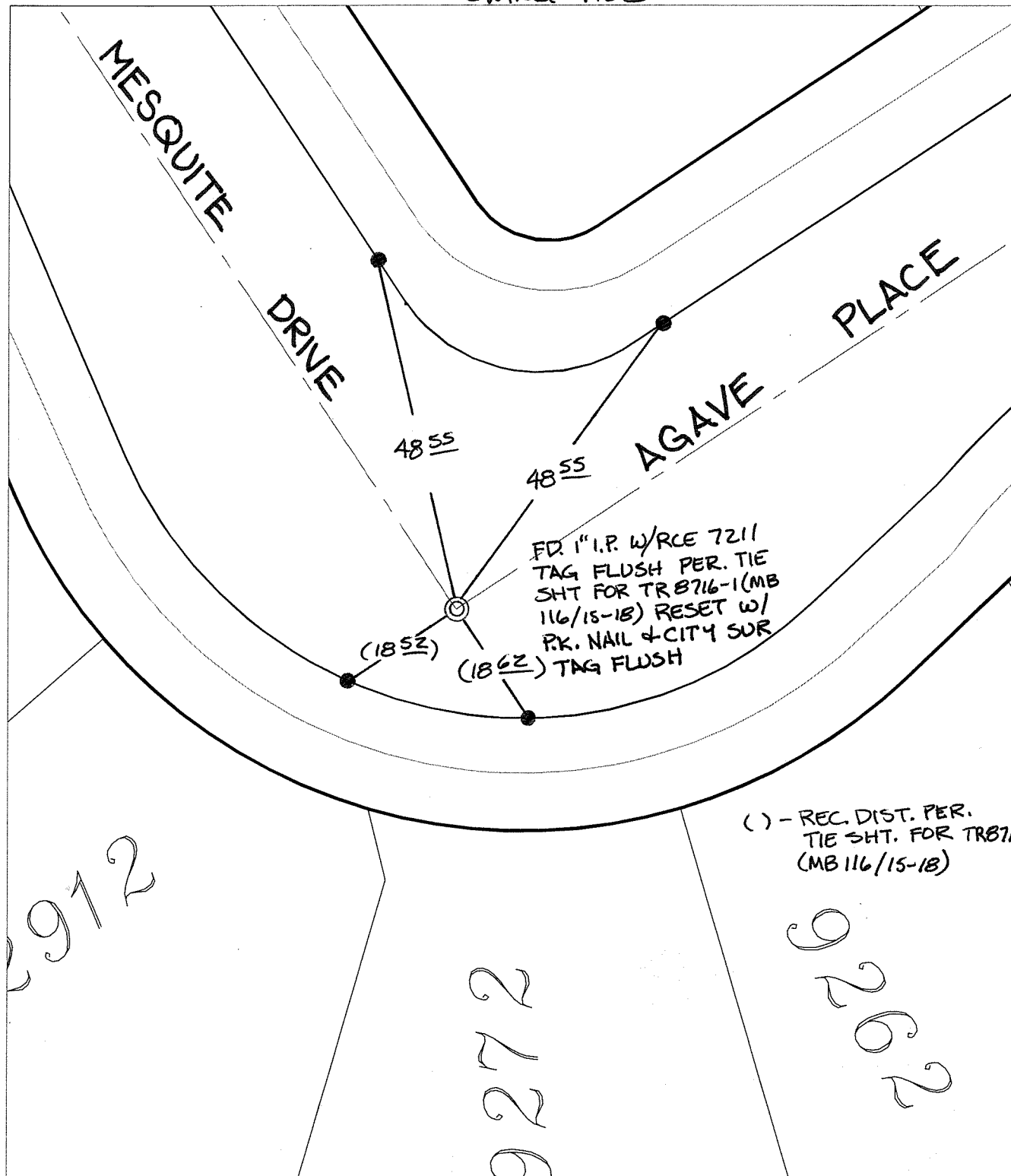
MESQUITE DRIVE

OFFICIAL USE ONLY

X-Street:

AGAVE PLACE

SWING TIES



FD. 1" I.P. W/RCE 7211
 TAG FLUSH PER. TIE
 SHT FOR TR 8716-1 (MB
 116/15-18) RESET W/
 P.K. NAIL & CITY SUR
 TAG FLUSH

() - REC. DIST. PER.
 TIE SHT. FOR TR 8716-1
 (MB 116/15-18)


- ✕ FD. Ramset Nail on T/C ● FD. LD. & TK. on T/C
- FD. "C" Nail on T/C ○ Set LD. & TK. on T/C

P.K. and City Engineer tag to be set @
 surface after street construction is
 complete. (If possible)

Scale: 1" = 20'
 Date: 04/06/09
 Drawn by: pw
 F.B.:
 TR-Sec: T3SR5W-17

OFFICIAL TIE PLAT
CITY OF RIVERSIDE

*These ties are for the purpose of perpetuating the found
 monumentation. No claim is made as to the relationship of
 the points or lines shown hereon to true boundary locations.*



Sheet 1 of 1
 Cadme MB: 81-2

2912

272

262