

C12545.71E

Street:

AVONDALE WAY

X-Street:

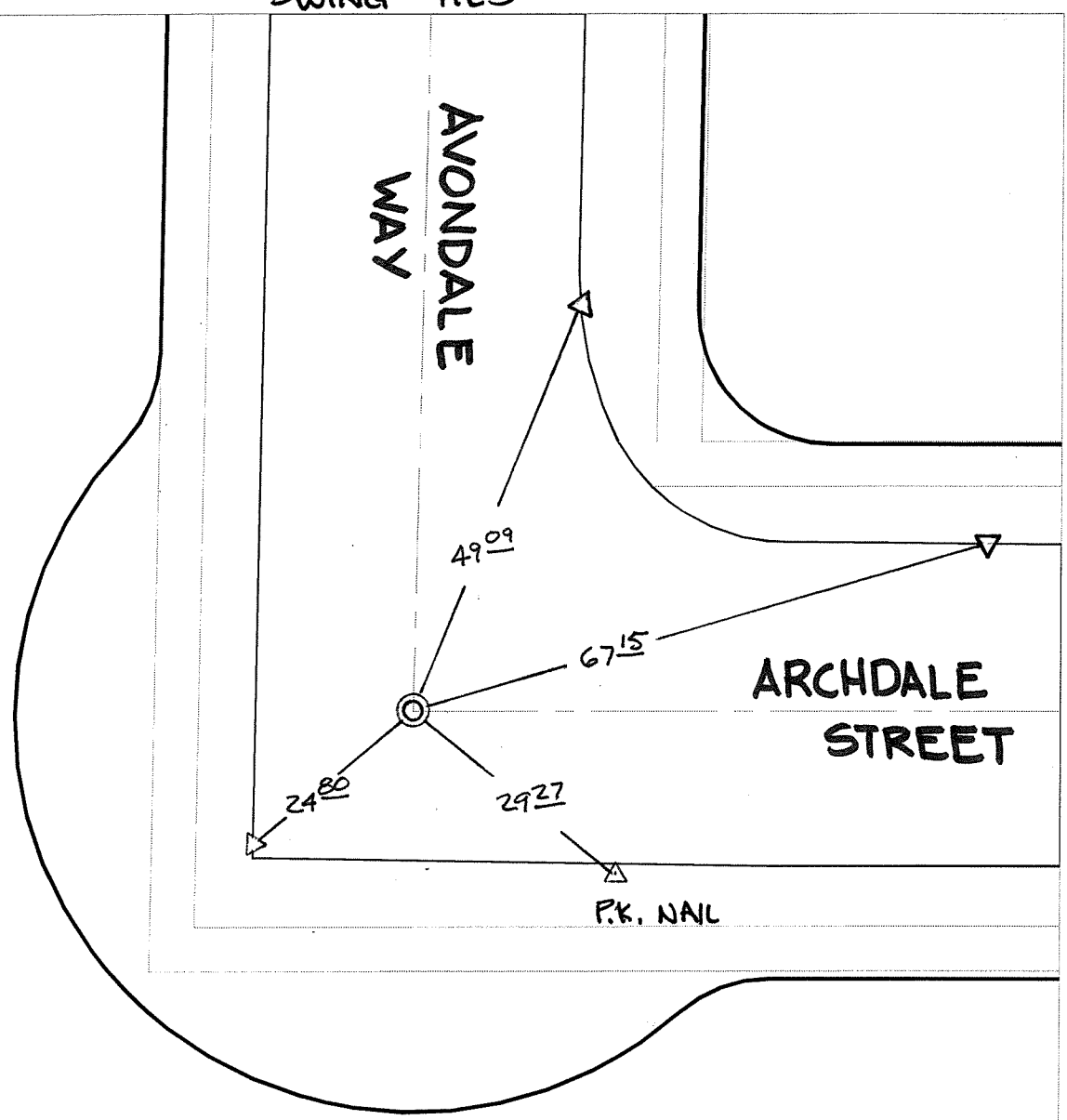
ARCHDALE ST

OFFICIAL USE ONLY

SWING TIES

AVONDALE WAY

ARCHDALE STREET



⊙ FD 1" I.P. W/RCE 362
 DN. 0.2' RESET W/PK.
 NAIL & CITY SUR. TAG
 DN. 0.05'

SET "C" NAIL & CITY TIE TAG ON T/C UNLESS NOTED

- ✕ FD. Ramset Nail on T/C
 - FD. LD. & TK. on T/C
 - FD. "C" Nail on T/C
 - Set LD. & TK. on T/C
- P.K. and City Engineer tag to be set @ surface after street construction is complete. (If possible)

Scale: 1" = 20'
 Date: 11/18/05
 Drawn by: scurtis
 F.B.:
 TR-Sec: T2SR5W-36

OFFICIAL TIE PLAT
CITY OF RIVERSIDE

These ties are for the purpose of perpetuating the found monumentation. No claim is made as to the relationship of the points or lines shown hereon to true boundary locations.

Sheet 1 of 1
 Cadme MB: 55-1