

C12549.71F

Street:

HOLLY LANE

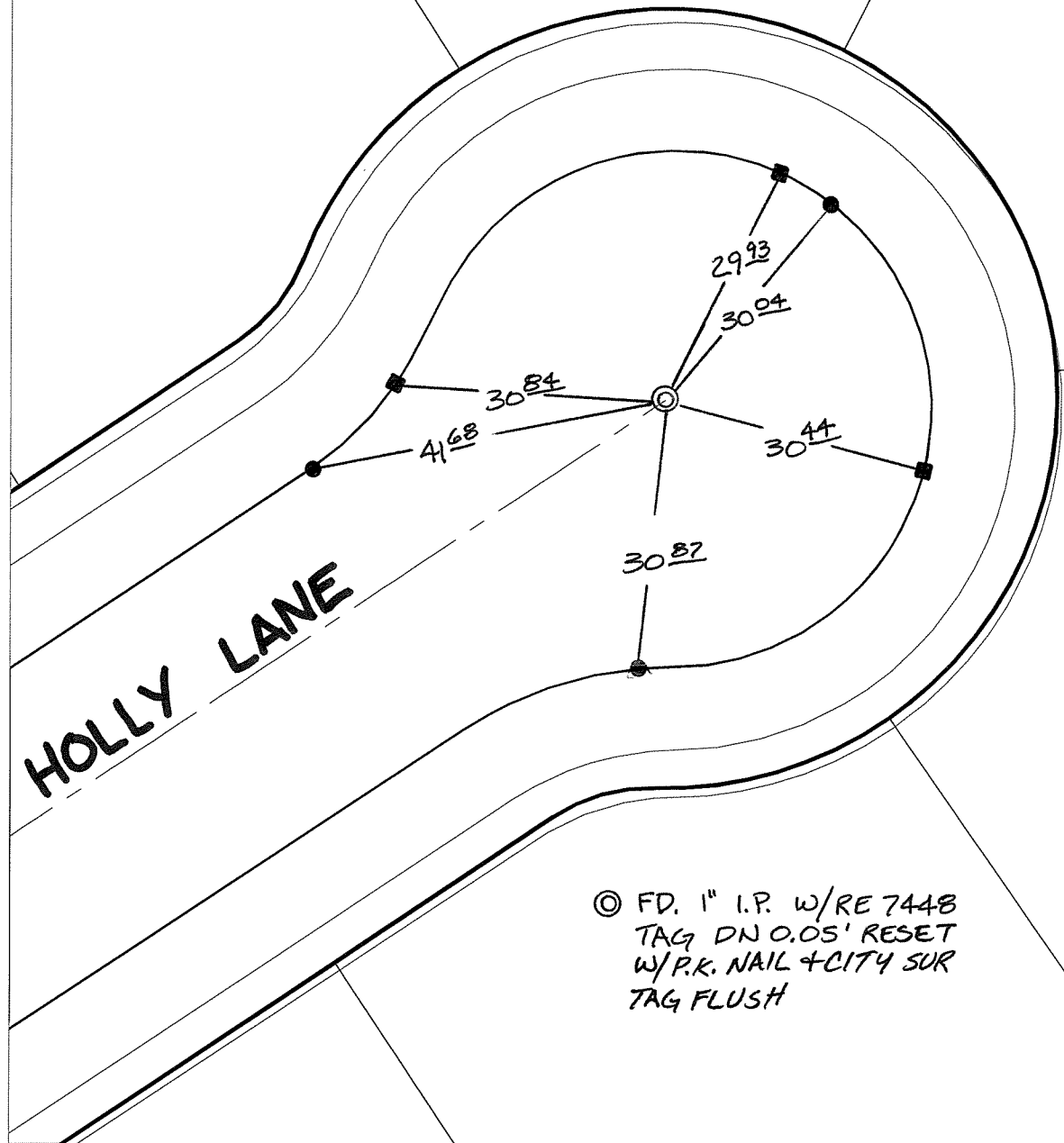
X-Street:  
OFFICIAL USE ONLY

CUL-DE-SAC

SWING TIES

HISTORICAL DATA

CRFB 630/17



© FD. 1" I.P. W/RE 7448  
TAG DN 0.05' RESET  
W/P.K. NAIL + CITY SUR  
TAG FLUSH

- ✕ FD. Ramset Nail on T/C    ● FD. LD. & TK. on T/C    P.K. and City Engineer tag to be set @ surface after street construction is complete. (If possible)
- FD. "C" Nail on T/C    ○ Set LD. & TK. on T/C

Scale: 1" = 20'  
 Date: 03/04/08  
 Drawn by: pw  
 F.B.:  
 TR-Sec: T3SR5W-6

**OFFICIAL TIE PLAT**  
**CITY OF RIVERSIDE**

*These ties are for the purpose of perpetuating the found monumentation. No claim is made as to the relationship of the points or lines shown hereon to true boundary locations.*



Sheet 1 of 1  
 Cadme MB: 51-5