

C/2551.TIF

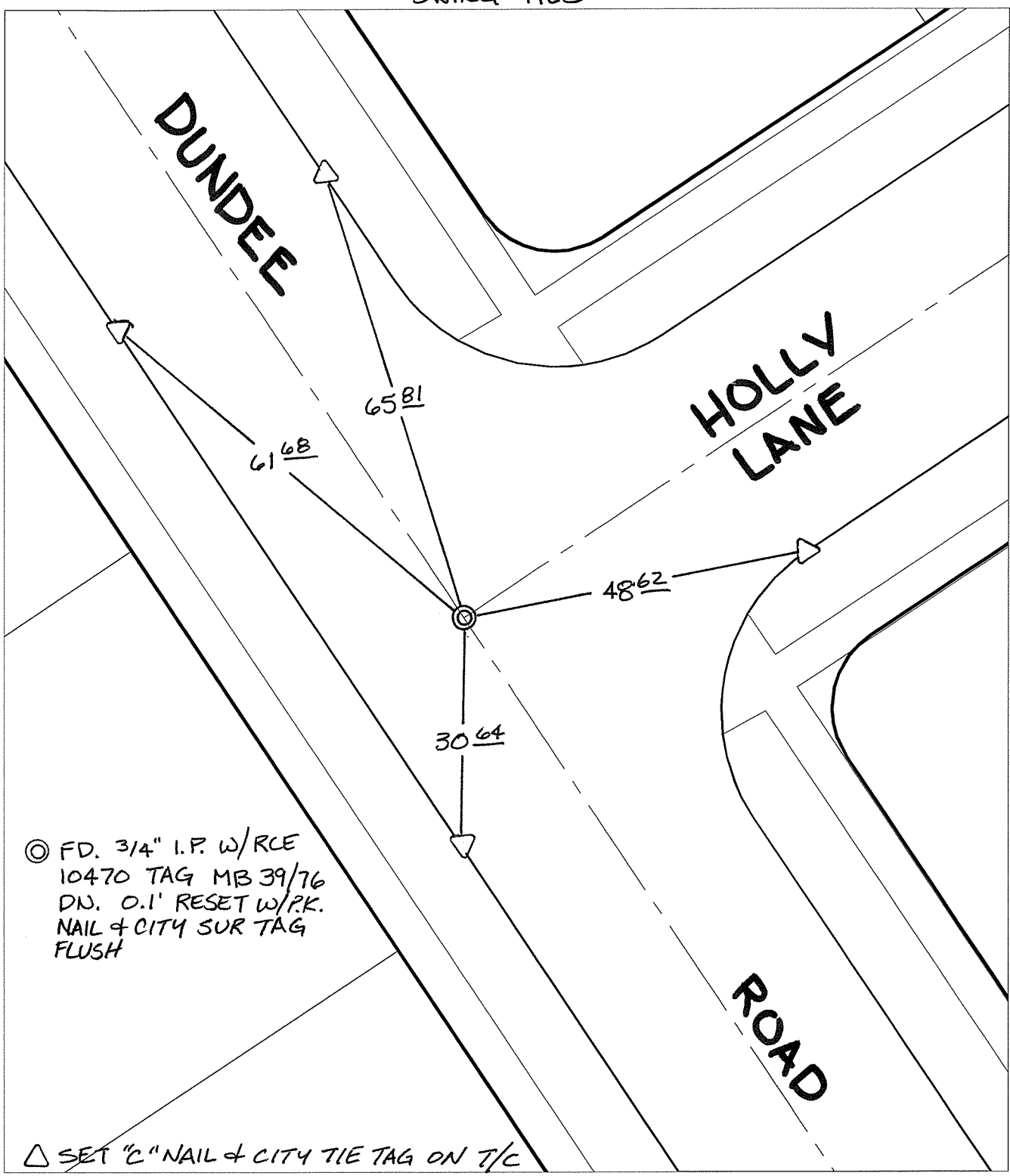
Street:

HOLLY LANE

X-Street:  
OFFICIAL USE ONLY

DUNDEE ROAD

SWING TIES



◎ FD. 3/4" I.P. W/RCE  
 10470 TAG MB 39/76  
 DN. 0.1' RESET W/P.K.  
 NAIL & CITY SUR TAG  
 FLUSH

△ SET "C" NAIL & CITY TIE TAG ON T/C

- ✕ FD. Ramset Nail on T/C
- FD. LD. & TK. on T/C
- FD. "C" Nail on T/C
- Set LD. & TK. on T/C

P.K. and City Engineer tag to be set @  
 surface after street construction is  
 complete. (If possible)

Scale: 1" = 20'  
 Date: 06/05/08  
 Drawn by: pw  
 F.B.:  
 TR-Sec: T3SR5W-6

**OFFICIAL TIE PLAT**  
 CITY OF RIVERSIDE

*These ties are for the purpose of perpetuating the found  
 monumentation. No claim is made as to the relationship of  
 the points or lines shown hereon to true boundary locations.*

Sheet 1 of 1  
 Cadme MB: 51-5