

1291.717

Street:

DRIFTWOOD DR.

OFFICIAL USE ONLY

X-Street:

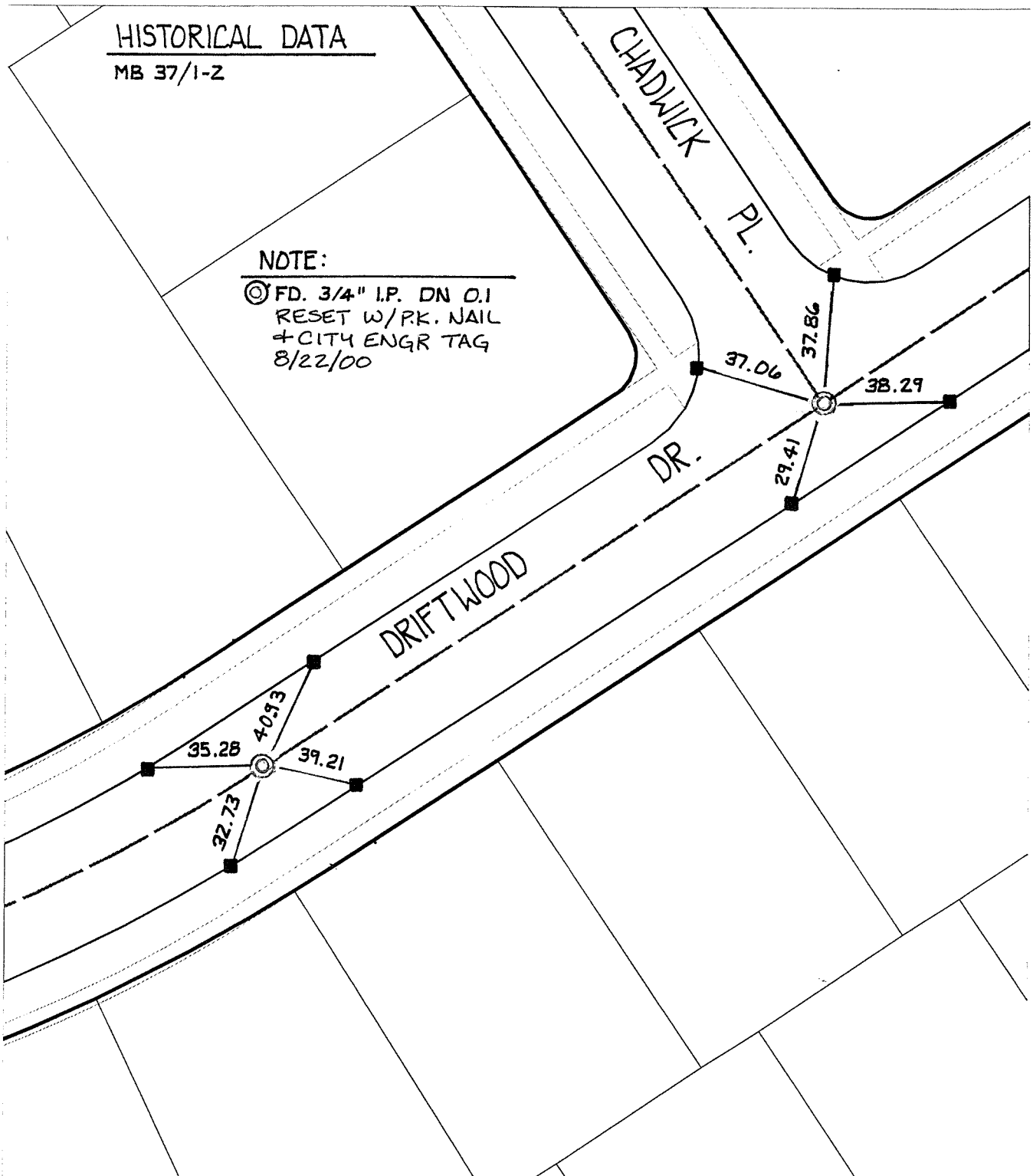
CHADWICK PL.

HISTORICAL DATA

MB 37/1-2

NOTE:

⊙ FD. 3/4" I.P. DN 0.1
RESET W/PK. NAIL
+ CITY ENGR TAG
8/22/00



- ✕ FD. Ramset Nail on T/C
- FD. "C" Nail on T/C

- FD. LD. & TK. on T/C
- Set LD. & TK. on T/C

Scale: 1" = 50'
 Date: 09/16/99
 Drawn by: L. Harris
 W.O.:
 F.B.:

OFFICIAL TIE PLAT
CITY OF RIVERSIDE

These ties are for the purpose of perpetuating the found monumentation. No claim is made as to the relationship of the points or lines shown hereon to true boundary locations.



Sheet 5 of 6
 File No.: