

C/2557. 71E

Street:

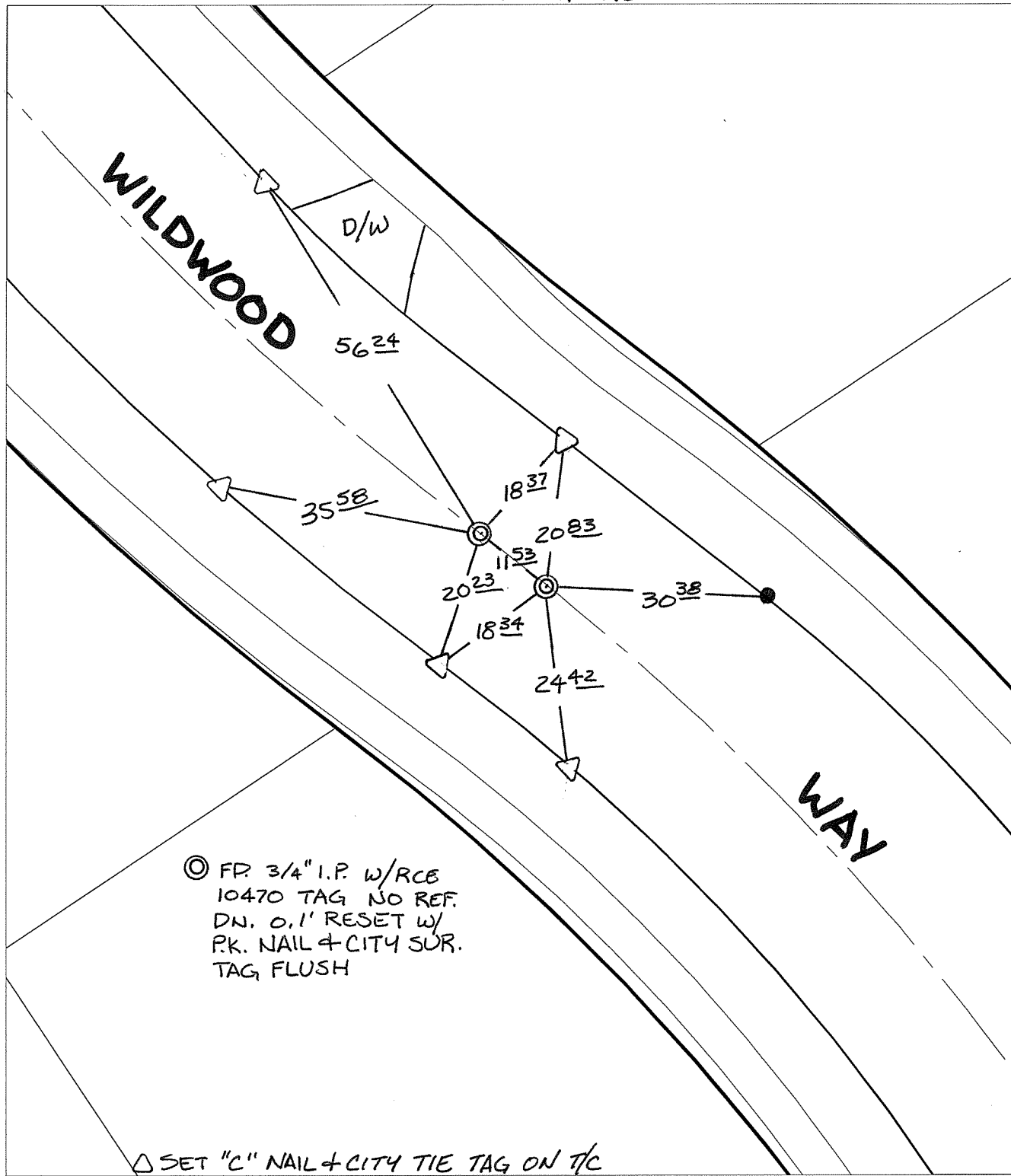
WILDWOOD EC & BC N. OF

X-Street:

CONWAY DRIVER

OFFICIAL USE ONLY

SWING TIES



⊗ FD. 3/4" I.P. W/RCE
 10470 TAG NO REF.
 DN. 0.1' RESET W/
 PK. NAIL & CITY SUR.
 TAG FLUSH

△ SET "C" NAIL & CITY TIE TAG ON T/C

- ⊗ FD. Ramset Nail on T/C ● FD. LD. & TK. on T/C
- FD. "C" Nail on T/C ○ Set LD. & TK. on T/C

P.K. and City Engineer tag to be set @
 surface after street construction is
 complete. (If possible)

Scale: 1" = 20'

Date: 03/05/08

Drawn by: pw

F.B.:

TR-Sec: T3SR5W-6

OFFICIAL TIE PLAT

CITY OF RIVERSIDE

*These ties are for the purpose of perpetuating the found
 monumentation. No claim is made as to the relationship of
 the points or lines shown hereon to true boundary locations.*



Sheet 1 of 1

Cadme MB: 51-5