

C/2568.71F

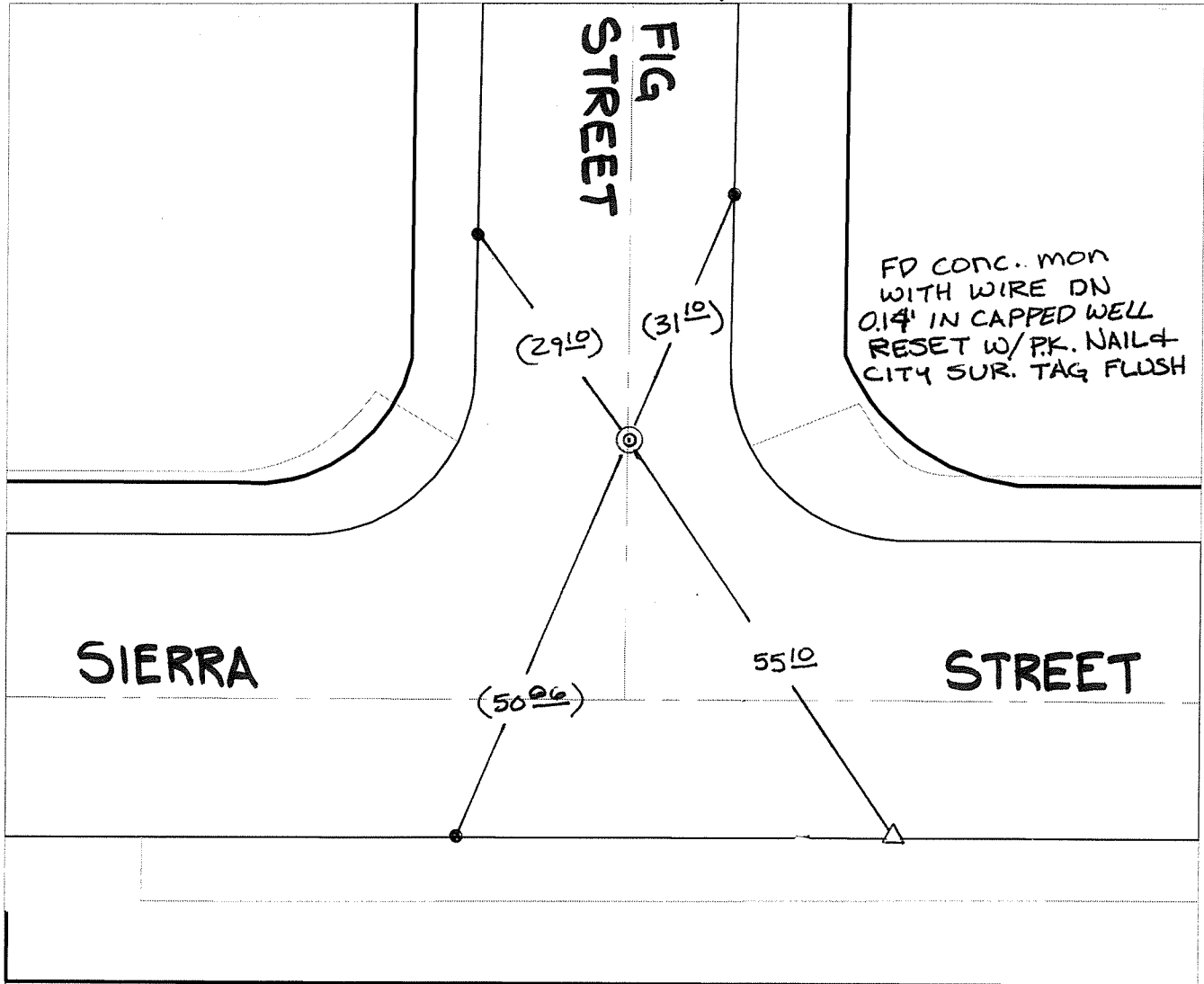
Street:

SIERRA STREET

X-Street:
OFFICIAL USE ONLY

FIG STREET

TRANSIT & SWING TIES



() REC. DIST PER
CRFB 387/74

- ✕ FD. Ramset Nail on T/C ● FD. LD. & TK. on T/C
- FD. "C" Nail on T/C ○ Set LD. & TK. on T/C

P.K. and City Engineer tag to be set @
surface after street construction is
complete. (If possible)

Scale: 1" = 20'

Date: 11/22/05

Drawn by: scurtis

F.B.:

TR-Sec: T2SR5W-33

OFFICIAL TIE PLAT

CITY OF RIVERSIDE

*These ties are for the purpose of perpetuating the found
monumentation. No claim is made as to the relationship of
the points or lines shown hereon to true boundary locations.*



Sheet 1 of 1

Cadme MB: 53-3