

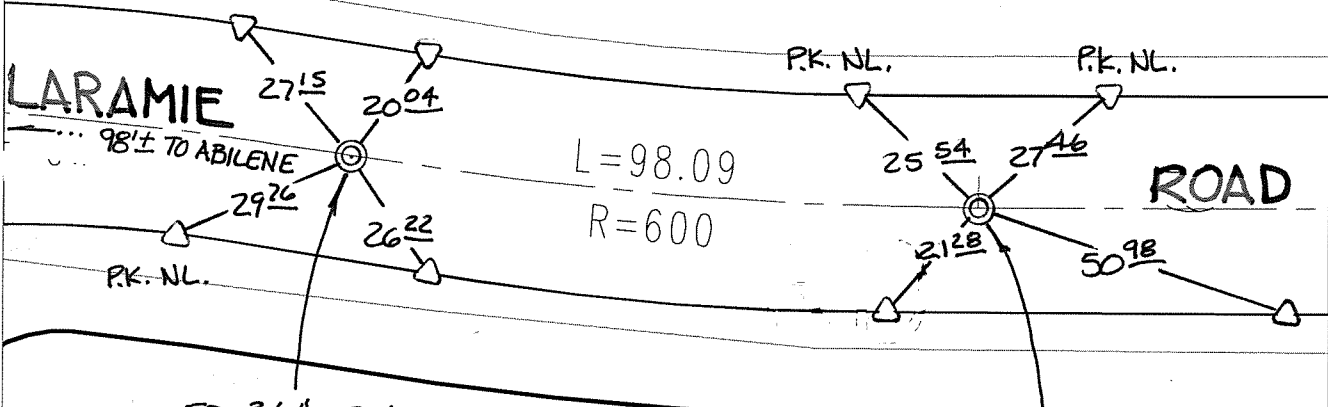
C12582. TIF

Street: LARAMIE ROAD BC, & EC X-Street: EAST OF ABILENE
OFFICIAL USE ONLY

SWING TIES

5610

2729



FD 3/4" I.P. NO
TAG DN. 1.2' RESET
W/P.K. NAIL & CITY
SUR TAG FLUSH

2729

FD 3/4" I.P. NO
TAG DN 0.5'
RESET W/P.K. NAIL
& CITY SUR TAG
FLUSH

2718

△ SET "C" NAIL & CITY TIE TAG ON T/C

- ✕ FD. Ramset Nail on T/C ● FD. LD. & TK. on T/C P.K. and City Engineer tag to be set @ surface after street construction is complete. (If possible)
- FD. "C" Nail on T/C ○ Set LD. & TK. on T/C

Scale: 1" = 30'

Date: 04/09/09

Drawn by: pw

F.B.:

TR-Sec: T2SR5W-35

OFFICIAL TIE PLAT

CITY OF RIVERSIDE

These ties are for the purpose of perpetuating the found monumentation. No claim is made as to the relationship of the points or lines shown hereon to true boundary locations.



Sheet 1 of 1

Cadme MB: 54-4