

C12588.71E

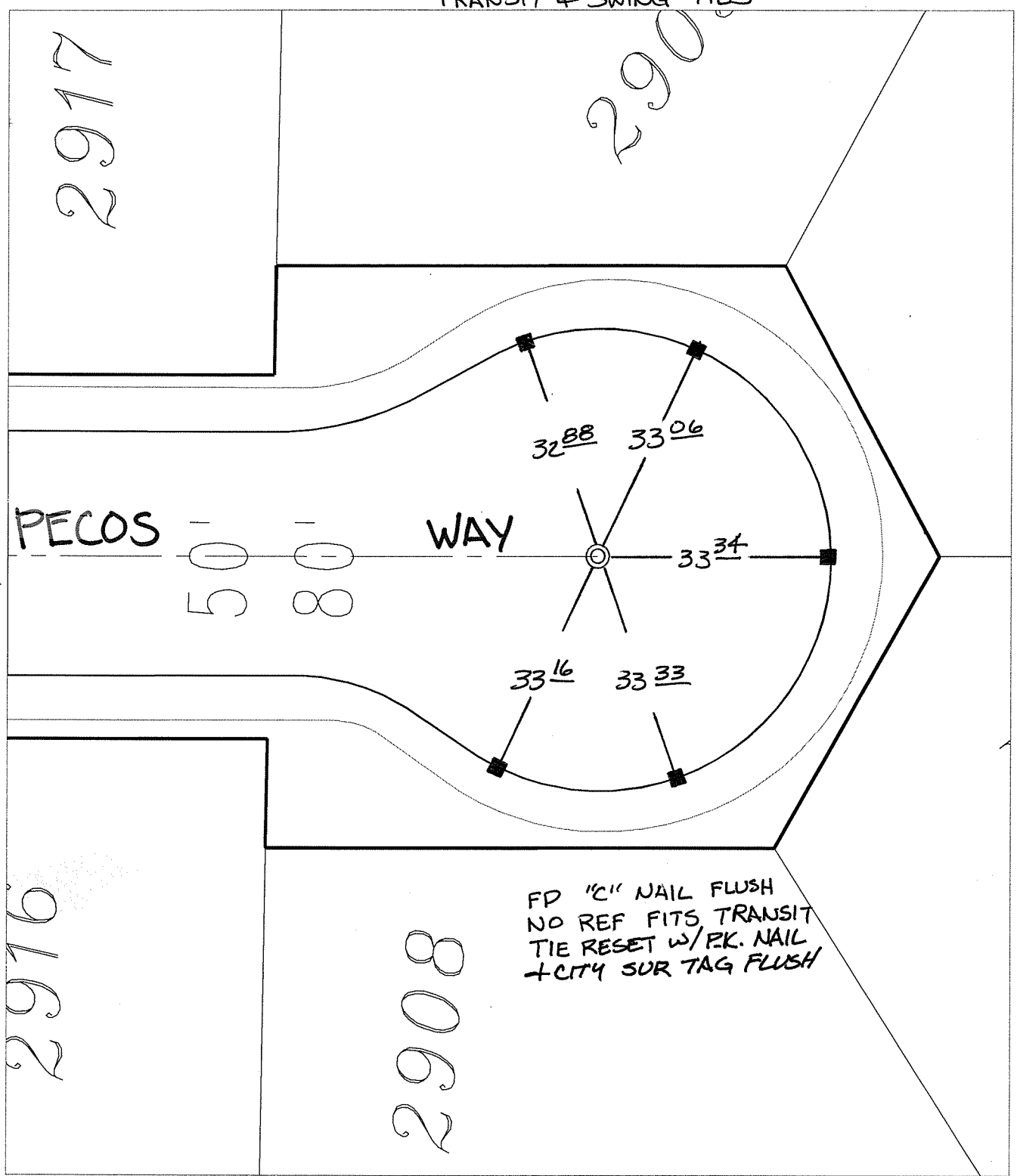
Street:

PECOS WAY

X-Street:
OFFICIAL USE ONLY

CUL-DE-SAC

TRANSIT + SWING TIES




FD "C" NAIL FLUSH
 NO REF FITS, TRANSIT
 TIE RESET w/PK. NAIL
 + CITY SUR TAG FLUSH

- ✕ FD. Ramset Nail on T/C ● FD. LD. & TK. on T/C P.K. and City Engineer tag to be set @ surface after street construction is complete. (If possible)
- FD. "C" Nail on T/C ○ Set LD. & TK. on T/C

Scale: 1" = 20'
 Date: 04/09/09
 Drawn by: pw
 F.B.:
 TR-Sec: T2SR5W-35

OFFICIAL TIE PLAT
CITY OF RIVERSIDE

These ties are for the purpose of perpetuating the found monumentation. No claim is made as to the relationship of the points or lines shown hereon to true boundary locations.



Sheet 1 of 1
 Cadme MB: 54-4