

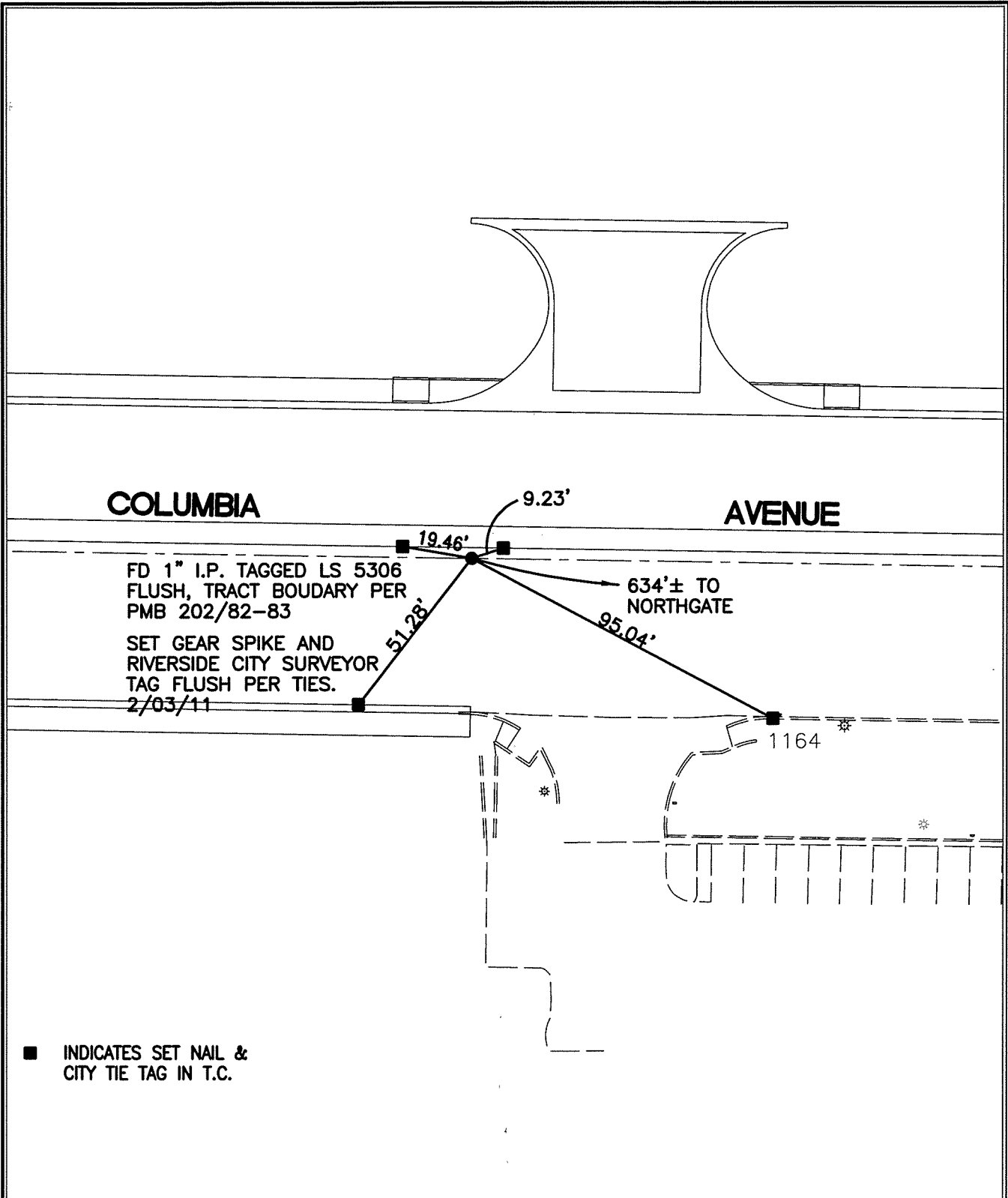
SWING TIES

C:\2600.TIF

STREET: COLUMBIA AVENUE

OFFICIAL USE ONLY

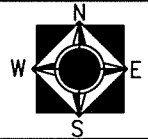
X-STREET: TR BDY WEST OF NORTHGATE



SCALE: 1"=40'
 DATE: 2/3/11
 DRAWN BY: CURT
 F.B.:
 SEC: 18 T2S.,R4W

OFFICIAL TIE PLAT CITY OF RIVERSIDE

THESE TIES ARE FOR THE PURPOSE OF PERPETUATING THE FOUND MONUMENTATION. NO CLAIM IS MADE AS THE RELATIONSHIP OF THE POINTS OR LINES SHOWN HEREON TO TRUE BOUNDARY LOCATIONS



SHEET 1 OF 1