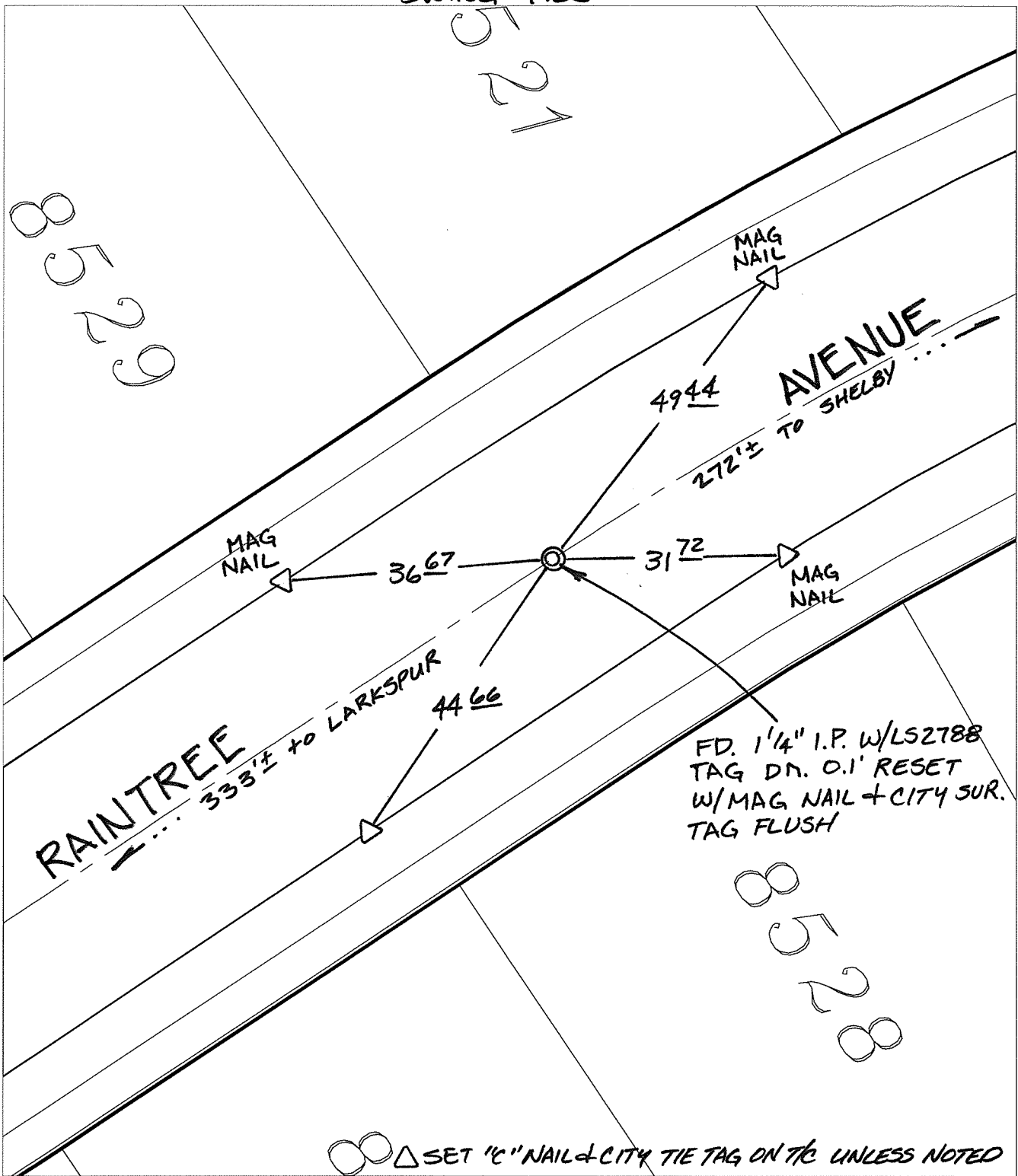


C12646.71F

Street: RAINTREE AVENUE

OFFICIAL USE ONLY X-Street: B.C. E. OF LARKSPUR RD.

SWING TIES



○△ SET "C" NAIL + CITY TIE TAG ON TRC UNLESS NOTED

- ✕ FD. Ramset Nail on T/C
- FD. LD. & TK. on T/C
- FD. "C" Nail on T/C
- Set LD. & TK. on T/C
- P.K. and City Engineer tag to be set @ surface after street construction is complete. (if possible)

Scale: 1" = 20'  
 Date: 06/08/12  
 Drawn by: pw  
 F.B.:  
 TR-Sec: T3SR5W-6

**OFFICIAL TIE PLAT**  
**CITY OF RIVERSIDE**

*These ties are for the purpose of perpetuating the found monumentation. No claim is made as to the relationship of the points or lines shown hereon to true boundary locations.*

Sheet 1 of 1  
 Cadme MB: 51-8