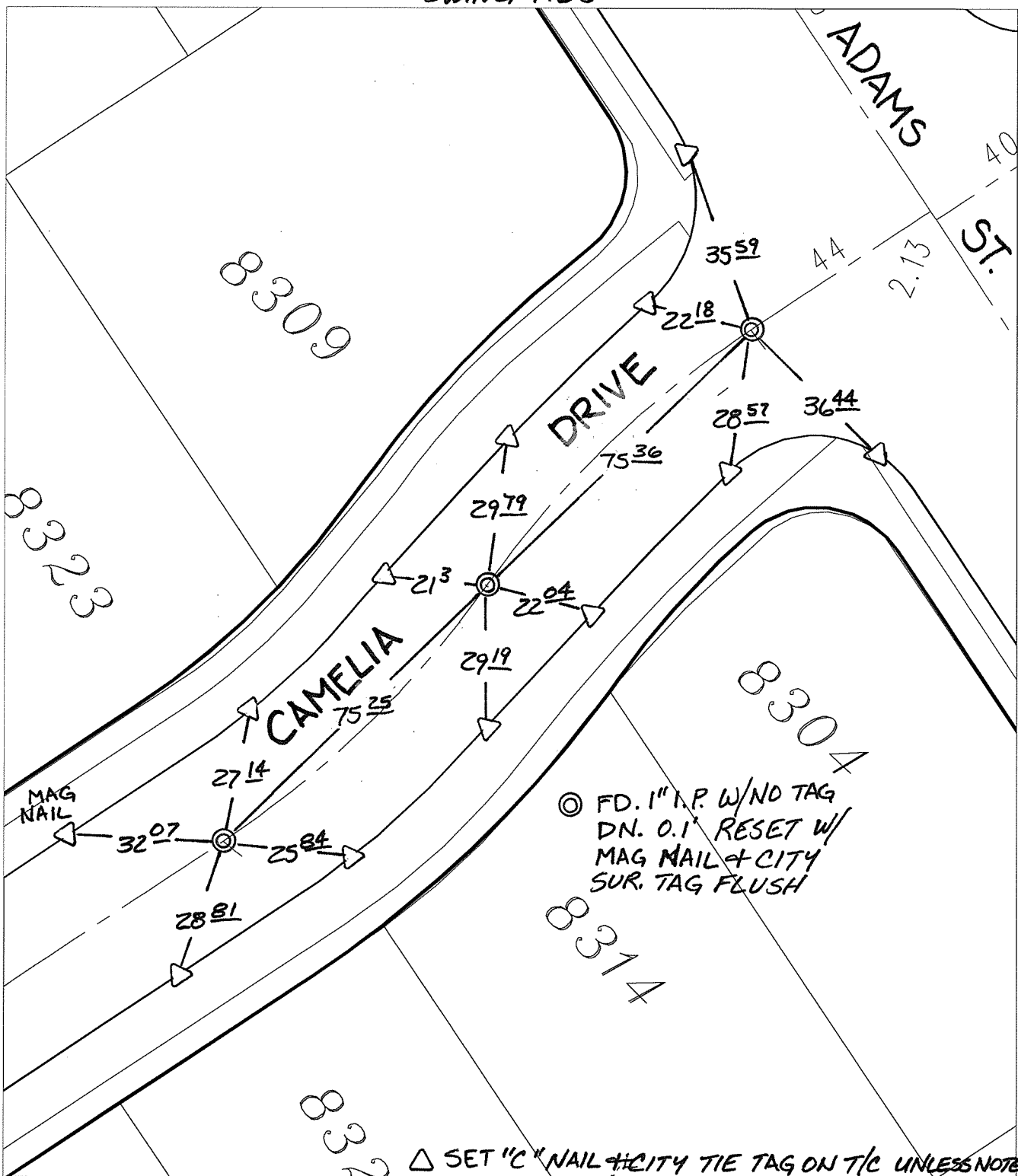


C/2648.71F

Street: CAMELIA DRIVE BC PRC X-Street WEST OF ADAMS STREET  
OFFICIAL USE ONLY

SWING TIES




- ✕ FD. Ramset Nail on T/C      ● FD. LD. & TK. on T/C      P.K. and City Engineer tag to be set @ surface after street construction is complete. (If possible)
- FD. "C" Nail on T/C      ○ Set LD. & TK. on T/C

Scale: 1" = 30'  
 Date: 06/05/12  
 Drawn by: pw  
 F.B.:  
 TR-Sec: T3SR5W-5

**OFFICIAL TIE PLAT**  
**CITY OF RIVERSIDE**

*These ties are for the purpose of perpetuating the found monumentation. No claim is made as to the relationship of the points or lines shown hereon to true boundary locations.*



Sheet 1 of 1  
 Cadme MB: 51-6