

C12649.71F

Street:

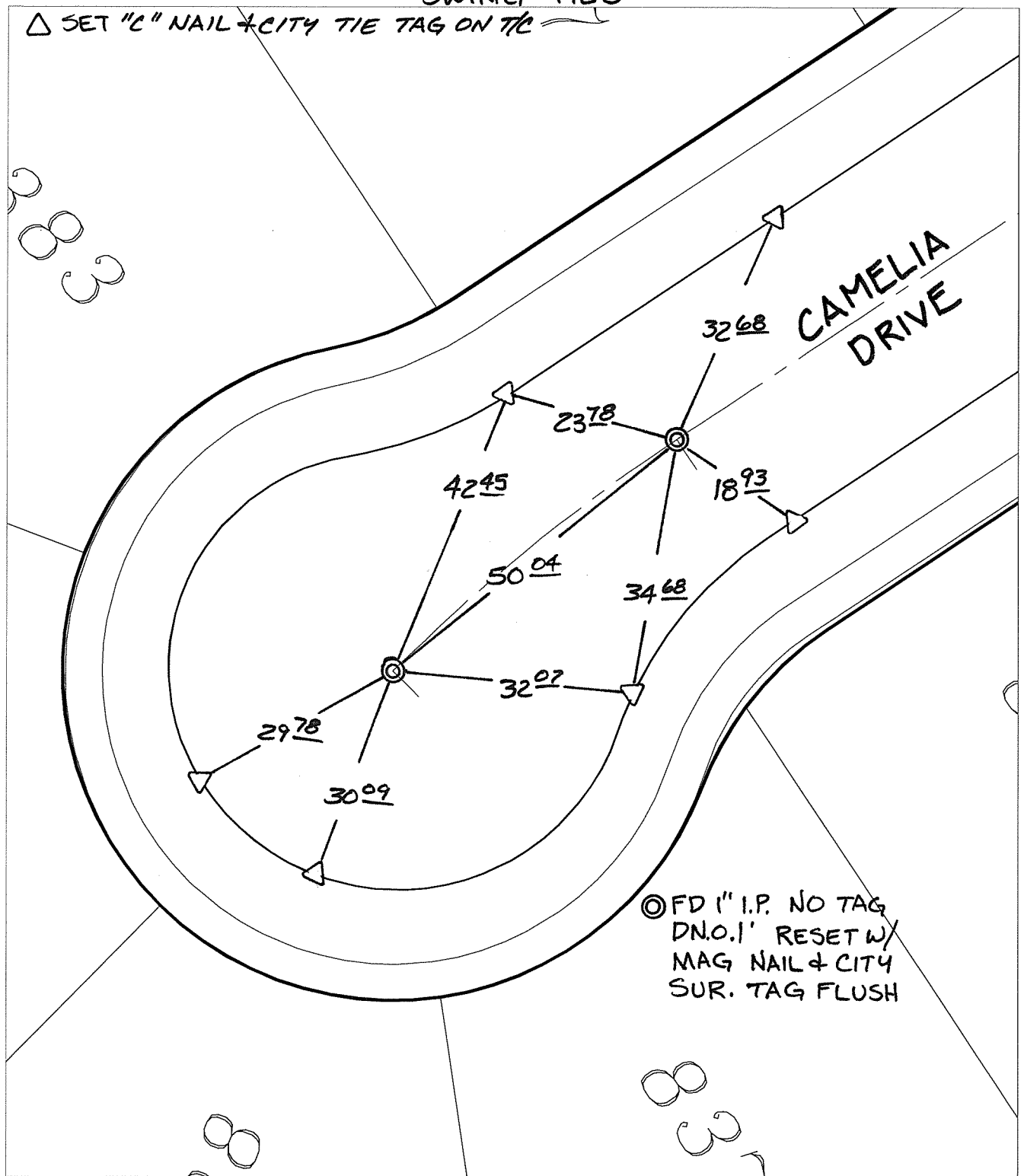
CAMELIA DRIVE

X-Street:
OFFICIAL USE ONLY

CUL-DE-SAC

SWING TIES

△ SET "C" NAIL + CITY TIE TAG ON T/C



⊙ FD 1" I.P. NO TAG
DN.O.1' RESET W/
MAG NAIL + CITY
SUR. TAG FLUSH

- × FD. Ramset Nail on T/C
- FD. LD. & TK. on T/C
- FD. "C" Nail on T/C
- Set LD. & TK. on T/C

P.K. and City Engineer tag to be set @
surface after street construction is
complete. (If possible)

Scale: 1" = 20'

Date: 06/05/12

Drawn by: pw

F.B.:

TR-Sec: T3SR5W-5

OFFICIAL TIE PLAT

CITY OF RIVERSIDE

*These ties are for the purpose of perpetuating the found
monumentation. No claim is made as to the relationship of
the points or lines shown hereon to true boundary locations.*



Sheet 1 of 1

Cadme MB: 51-6