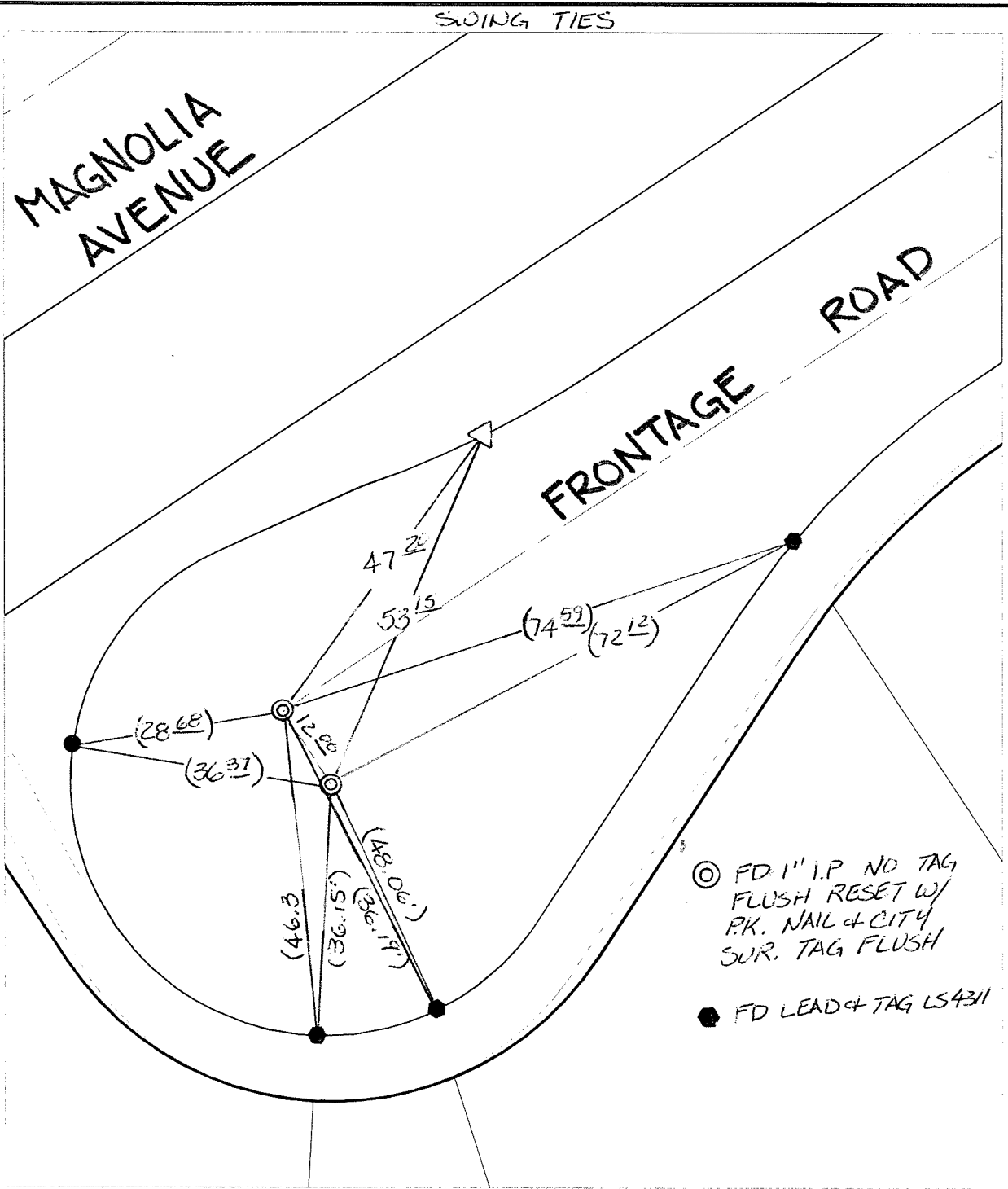


C12659.71F

Street: MAGNOLIA FRONTAGE ROAD X-Street: CULO-DE-SAC  
OFFICIAL USE ONLY



⊙ FD 1" I.P. NO TAG  
FLUSH RESET W/  
P.K. NAIL & CITY  
SUR. TAG FLUSH

● FD LEAD & TAG LS431

- ✕ FD. Ramset Nail on T/C      ● FD. LD. & TK. on T/C      P.K. and City Engineer tag to be set @ surface after street construction is complete. (If possible)
- FD. "C" Nail on T/C      ○ Set LD. & TK. on T/C

Scale: 1" = 20'  
 Date: 04/15/11  
 Drawn by: pw  
 F.B.:  
 TR-Sec: T3SR6W-23

**OFFICIAL TIE PLAT**  
 CITY OF RIVERSIDE

*These ties are for the purpose of perpetuating the found monumentation. No claim is made as to the relationship of the points or lines shown hereon to true boundary locations.*

Sheet 1 of 1  
 Cadme MB: 79-5