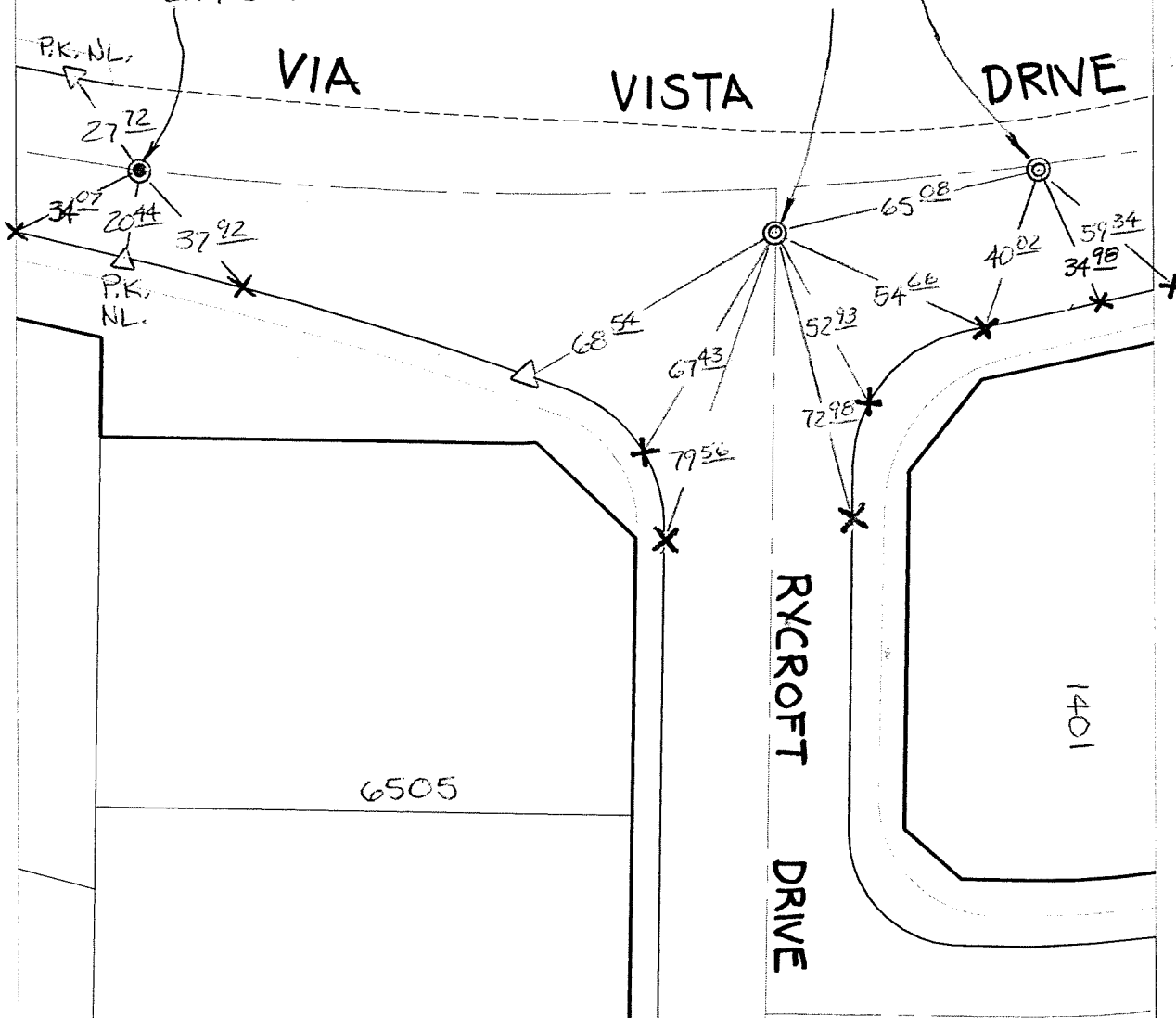


SWING TIES

REF : WEBB ASSOC. TIE  
SHT. FOR TR 21679-1  
MB 91/82-85

FD. 1" I.P. NO TAG  
FLUSH RESET W/  
MAG NAIL & CITY  
SUR. TAG FLUSH

FD P.K. NAIL &  
CITY SUR. TAG FLUSH



Street:

VIA VISTA DRIVE

X-Street:  
OFFICIAL USE ONLY

RYCROFT DRIVE

C12666.TIF

- ✕ FD. Ramset Nail on T/C    ● FD. LD. & TK. on T/C
- FD. "C" Nail on T/C    ○ Set LD. & TK. on T/C

P.K. and City Engineer tag to be set @  
surface after street construction is  
complete. (If possible)

Scale: 1" = 40'

Date: 11/28/11

Drawn by: pw

F.B.:

TR-Sec: T3SR4W-6

**OFFICIAL TIE PLAT**  
CITY OF RIVERSIDE

*These ties are for the purpose of perpetuating the found  
monumentation. No claim is made as to the relationship of  
the points or lines shown hereon to true boundary locations.*



Sheet 1 of 1

Cadme MB: 71-1