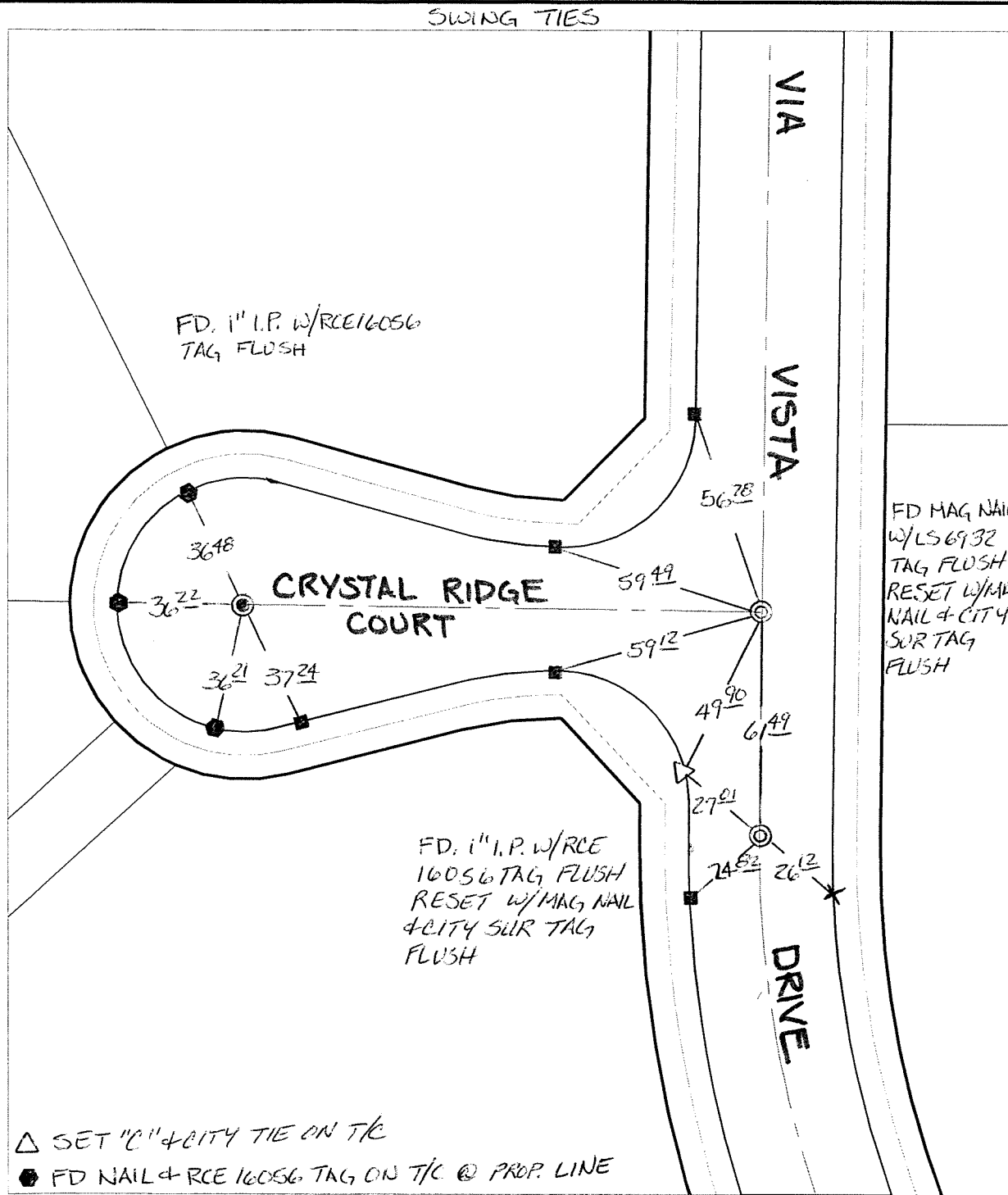


C/2673.71P

Street: VIA VISTA DRIVE

OFFICIAL USE ONLY

X-Street: CRYSTAL RIDGE COURT



FD MAG NAIL
W/LS 6932
TAG FLUSH
RESET W/MAG
NAIL & CITY
SUR TAG
FLUSH

FD. 1" I.P. W/RCE
16056 TAG FLUSH
RESET W/MAG NAIL
& CITY SUR TAG
FLUSH

- △ SET "C" & CITY TIE ON T/C
- FD. LD. & TK. on T/C
- FD. "C" Nail on T/C
- Set LD. & TK. on T/C

P.K. and City Engineer tag to be set @
surface after street construction is
complete. (If possible)

Scale: 1" = 40'

Date: 12/13/12

Drawn by: pw

F.B.:

TR-Sec: T3SR5W-12

OFFICIAL TIE PLAT

CITY OF RIVERSIDE

*These ties are for the purpose of perpetuating the found
monumentation. No claim is made as to the relationship of
the points or lines shown hereon to true boundary locations.*



Sheet 1 of 1

Cadme MB: 71-5