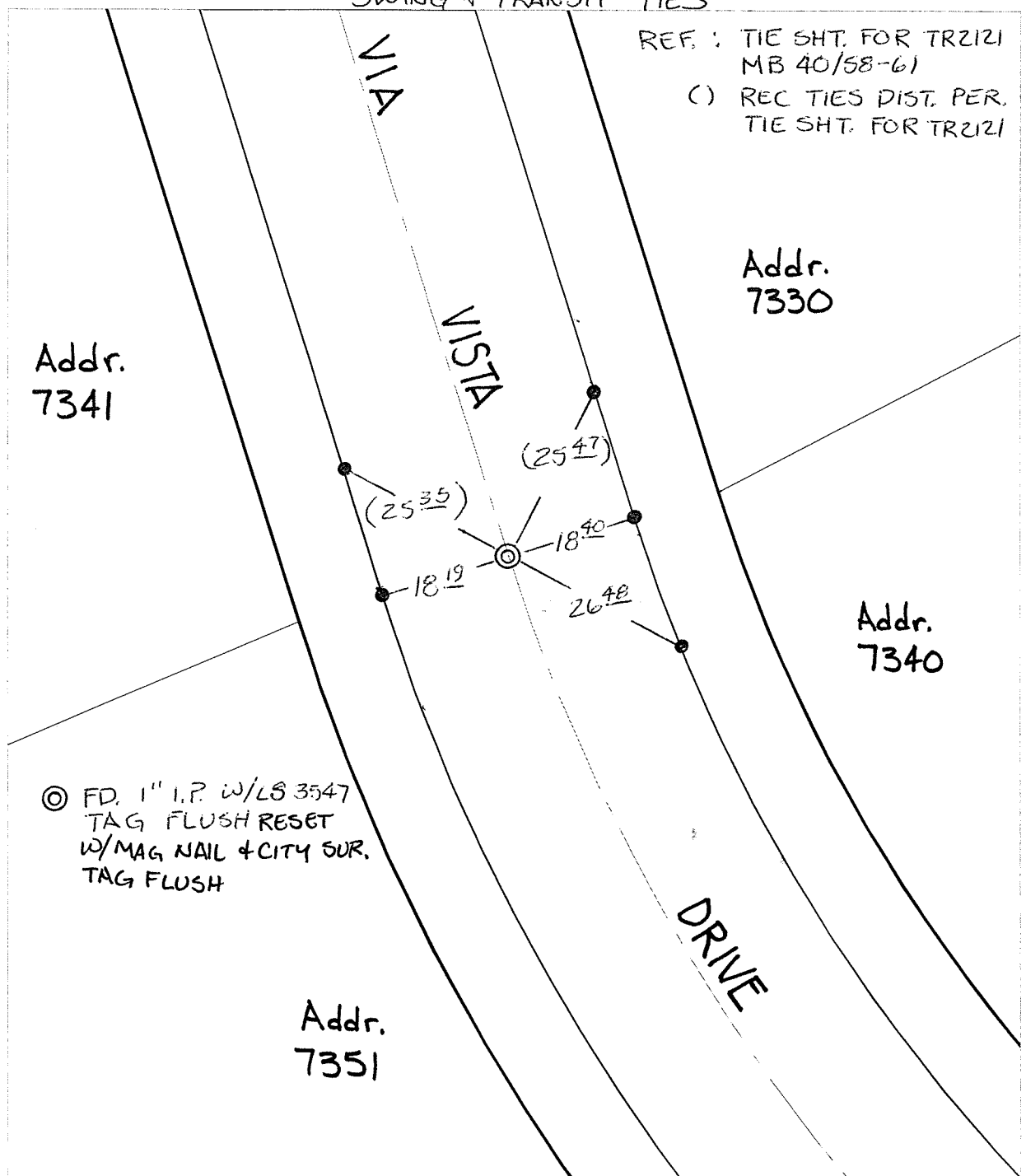


C12685.TIF

Street: VIA VISTA DRIVE EC N.W. X-Street: OF CORINTHIAN WAY
OFFICIAL USE ONLY

SWING + TRANSIT TIES

REF.: TIE SHT. FOR TR2121 MB 40/58-6
() REC TIES DIST. PER. TIE SHT. FOR TR2121




© FD. 1" I.P. w/LB 3547
TAG FLUSH RESET
w/MAG NAIL + CITY SUR.
TAG FLUSH

- ✕ FD. Ramset Nail on T/C ● FD. LD. & TK. on T/C P.K. and City Engineer tag to be set @ surface after street construction is complete. (If possible)
- FD. "C" Nail on T/C ○ Set LD. & TK. on T/C

Scale: 1" = 20'
 Date: 01/06/12
 Drawn by: pw
 F.B.:
 TR-Sec: T3SR4W-7

OFFICIAL TIE PLAT
CITY OF RIVERSIDE

These ties are for the purpose of perpetuating the found monumentation. No claim is made as to the relationship of the points or lines shown hereon to true boundary locations.



Sheet 1 of 1
 Cadme MB: 71-7