

SWING TIES

HISTORICAL DATA

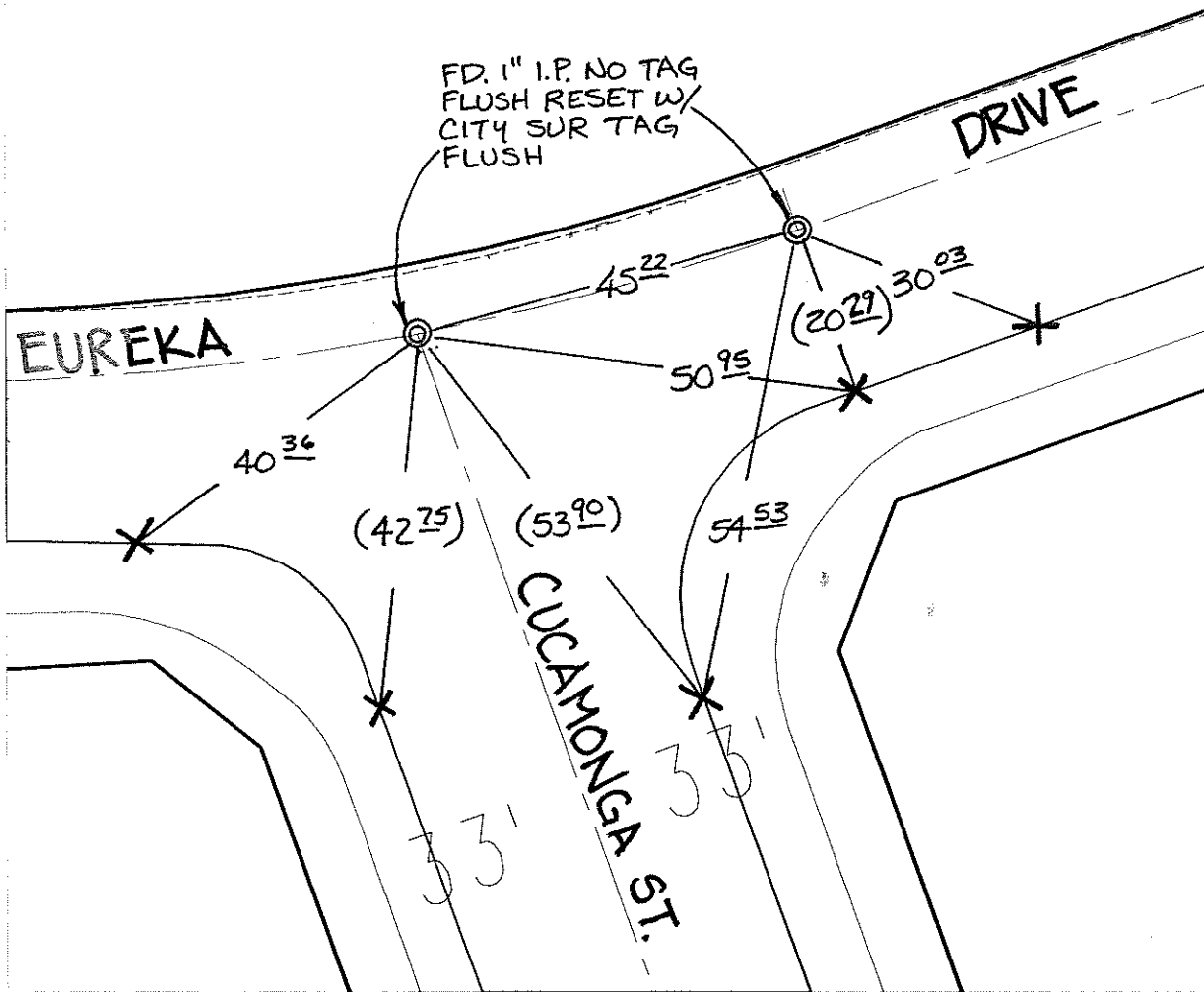
WEBB F.B. 1042/136  
TR 9418 MB 94/14-18

C12698, T1E

Street: CUCAMONGA STREET

X-Street: EUREKA DRIVE

OFFICIAL USE ONLY



- ✕ FD. Ramset Nail on T/C
  - FD. LD. & TK. on T/C
  - FD. "C" Nail on T/C
  - Set LD. & TK. on T/C
- P.K. and City Engineer tag to be set @ surface after street construction is complete. (If possible)

Scale: 1" = 20'

Date: 06/22/12

Drawn by: pw

F.B.:

TR-Sec: T2SR6W-35

**OFFICIAL TIE PLAT**  
CITY OF RIVERSIDE



*These ties are for the purpose of perpetuating the found monumentation. No claim is made as to the relationship of the points or lines shown hereon to true boundary locations.*

Sheet 1 of 1  
Cadme MB: 49-1