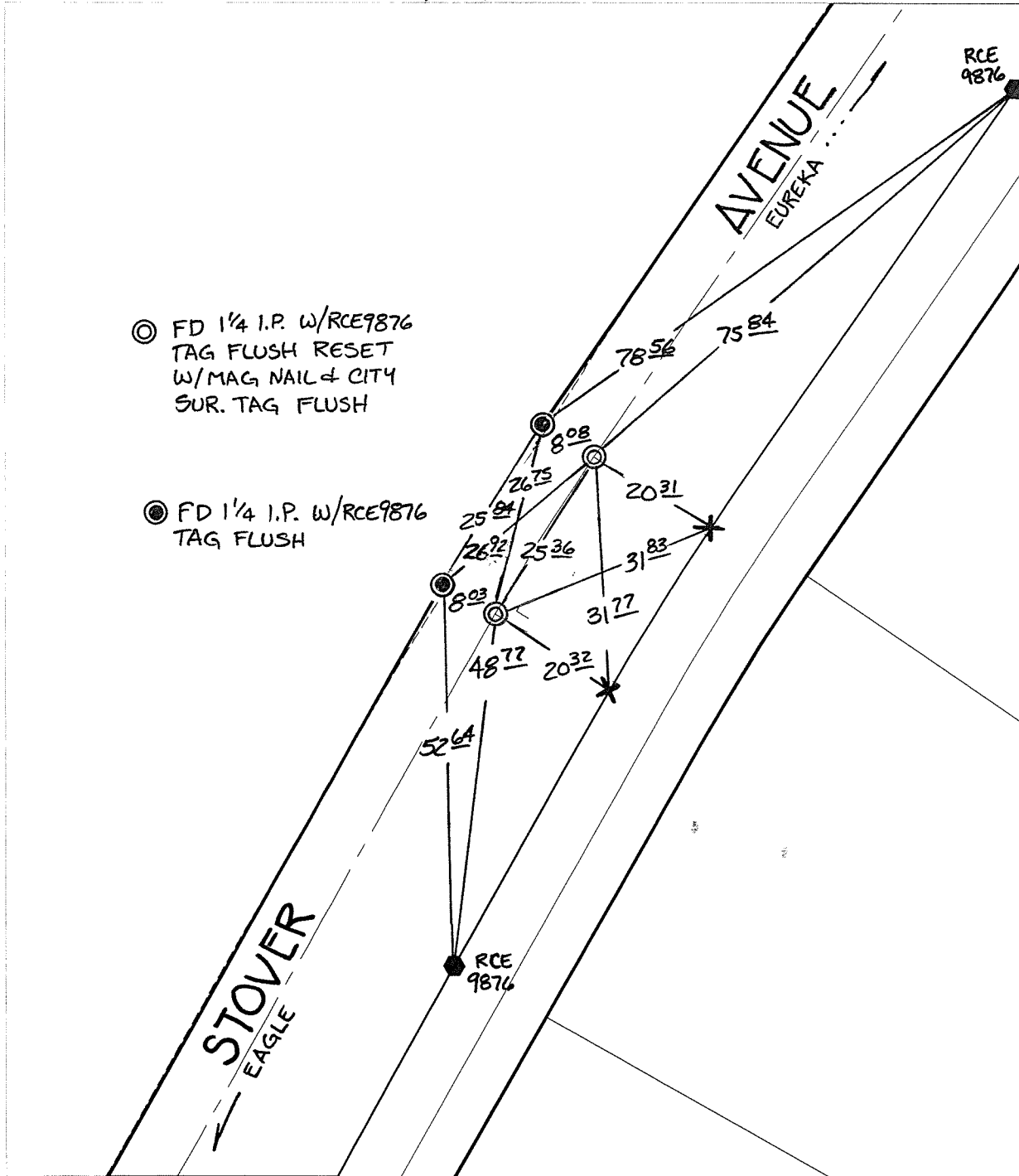


SWING TIES

C12711.71F

Street: STOVER AVENUE BC & EC X-Streets SOUTH OF EUREKA DRIVE

OFFICIAL USE ONLY



⊙ FD 1/4 I.P. w/RCE9876
TAG FLUSH RESET
W/MAG NAIL & CITY
SUR. TAG FLUSH

⊙ FD 1/4 I.P. w/RCE9876
TAG FLUSH

- ✕ FD. Ramset Nail on T/C
- FD. LD. & TK. on T/C
- FD. "C" Nail on T/C
- Set LD. & TK. on T/C

P.K. and City Engineer tag to be set @ surface after street construction is complete. (If possible)

Scale: 1" = 20'

Date: 06/13/12

Drawn by: pw

F.B.:

TR-Sec: T2SR6W-35

OFFICIAL TIE PLAT
CITY OF RIVERSIDE

These ties are for the purpose of perpetuating the found monumentation. No claim is made as to the relationship of the points or lines shown hereon to true boundary locations.



Sheet 1 of 1

Cadme MB: 49-1