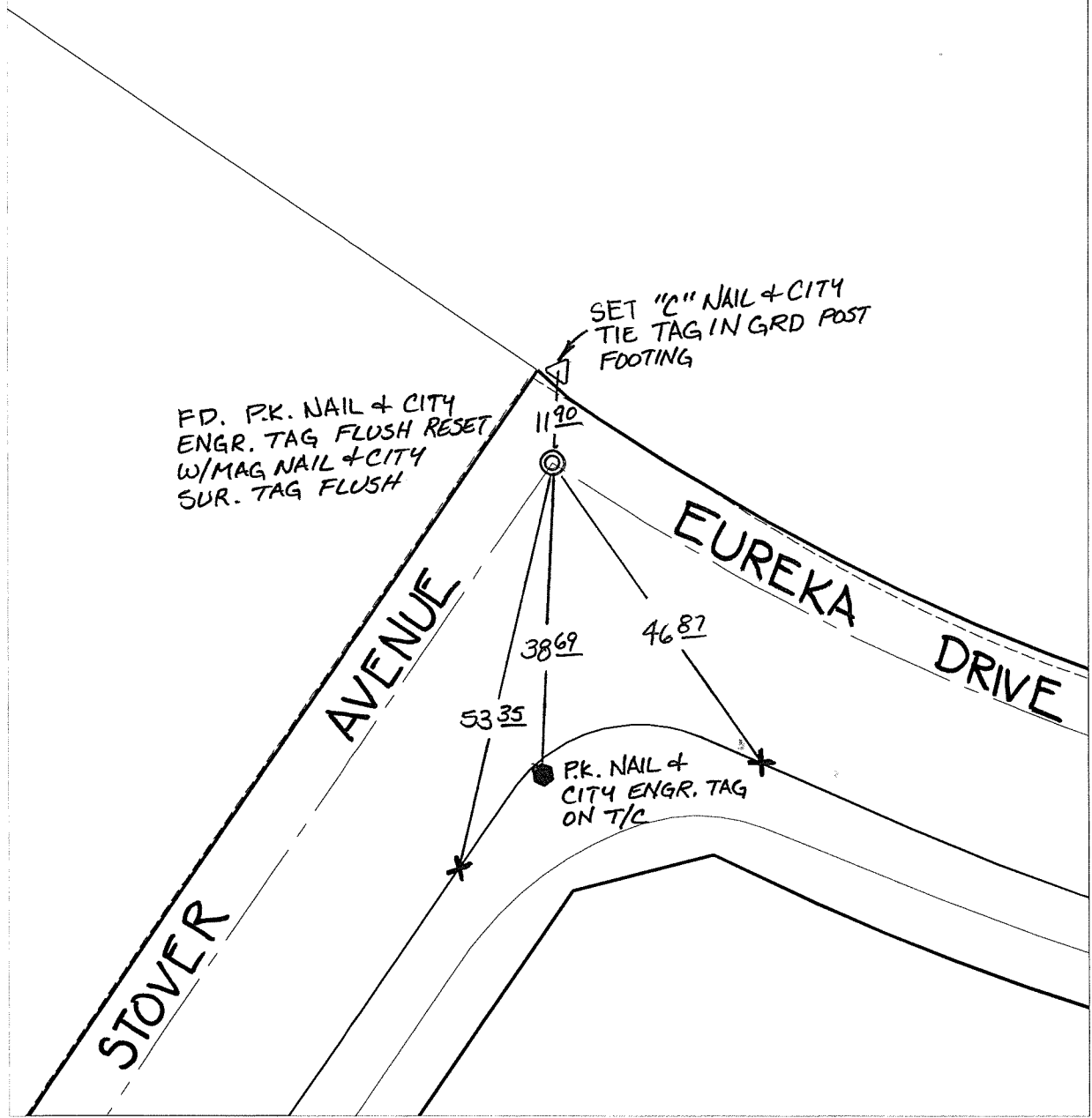


C12712.71E

Street: EUREKA DRIVE
X-Street: STOVER AVENUE
OFFICIAL USE ONLY

SWING TIES



FD. P.K. NAIL + CITY ENGR. TAG FLUSH RESET W/MAG NAIL + CITY SUR. TAG FLUSH

SET "C" NAIL + CITY TIE TAG IN GRD POST FOOTING

P.K. NAIL + CITY ENGR. TAG ON T/C

- ✕ FD. Ramset Nail on T/C ● FD. LD. & TK. on T/C P.K. and City Engineer tag to be set @ surface after street construction is complete. (If possible)
- FD. "C" Nail on T/C ○ Set LD. & TK. on T/C

Scale: 1" = 20'
 Date: 06/13/12
 Drawn by: pw
 F.B.:
 TR-Sec: T2SR6W-35

OFFICIAL TIE PLAT

CITY OF RIVERSIDE



These ties are for the purpose of perpetuating the found monumentation. No claim is made as to the relationship of the points or lines shown hereon to true boundary locations.

Sheet 1 of 1
 Cadme MB: 49-1