

C12714.71F

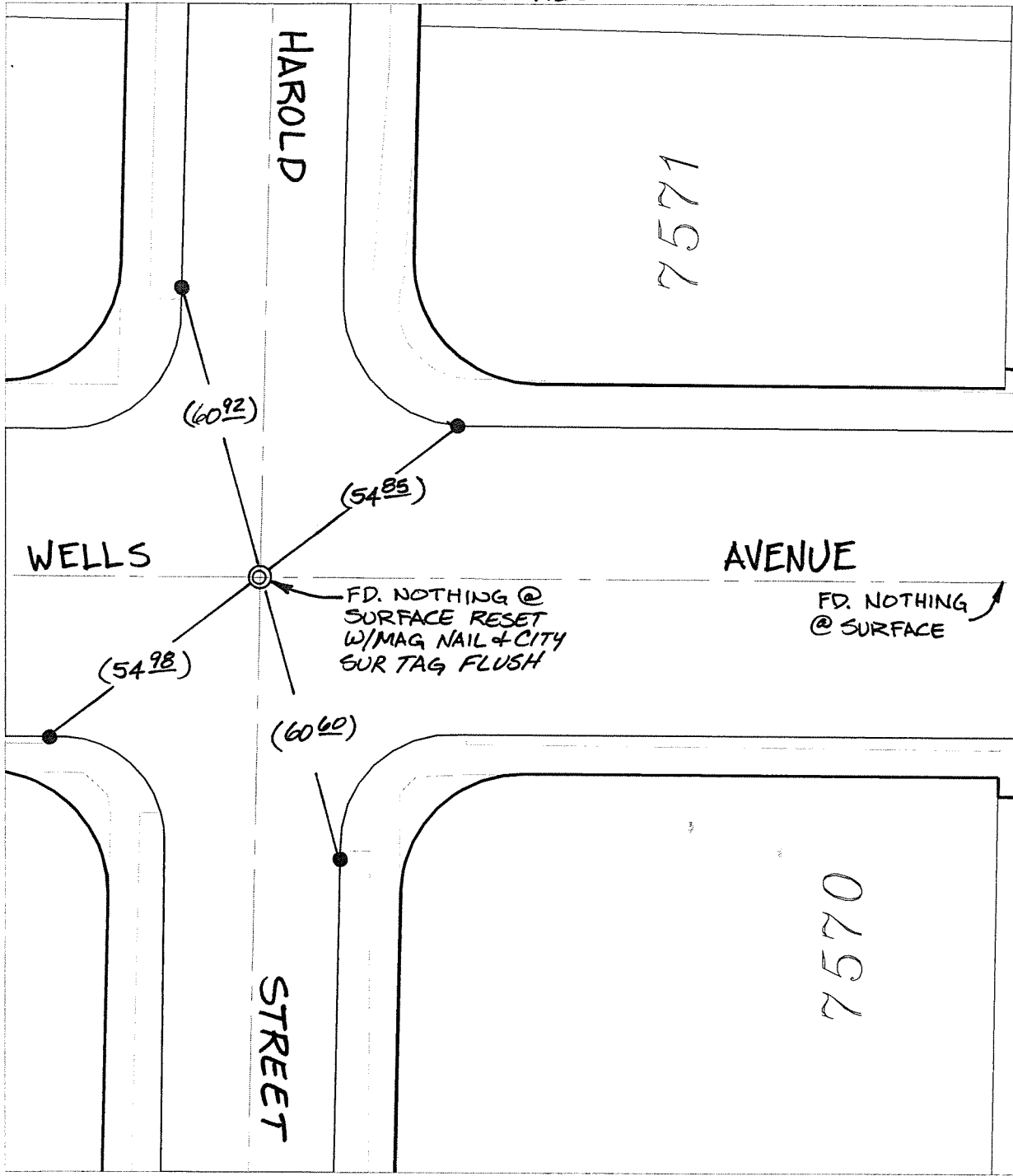
Street:

WELLS AVENUE

X-Street:  
OFFICIAL USE ONLY

HAROLD STREET

TRANSIT TIES



- ✕ FD. Ramset Nail on T/C      ● FD. LD. & TK. on T/C      P.K. and City Engineer tag to be set @ surface after street construction is complete. (If possible)
- FD. "C" Nail on T/C      ○ Set LD. & TK. on T/C

Scale: 1" = 30'

Date: 05/03/12

Drawn by: pw

F.B.:

TR-Sec: T3SR6W-1

**OFFICIAL TIE PLAT**  
CITY OF RIVERSIDE

*These ties are for the purpose of perpetuating the found monumentation. No claim is made as to the relationship of the points or lines shown hereon to true boundary locations.*

Sheet 1 of 1

Cadme MB: 65-2