

C/12737, T1E

Street: CHERRYHILL DRIVE X-Street: FAIRHILL DRIVE  
OFFICIAL USE ONLY

SWING TIES

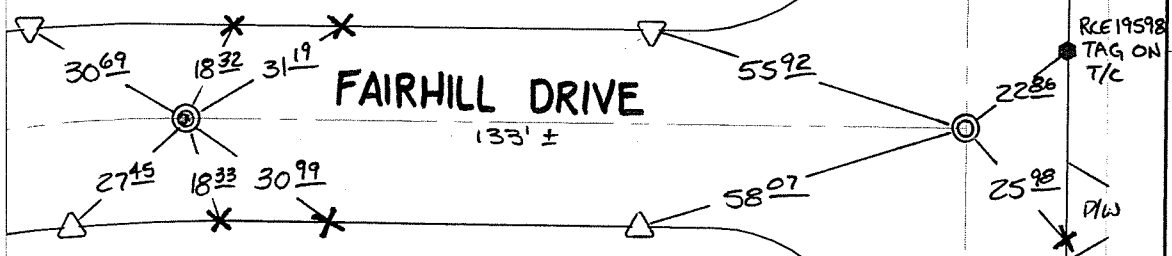
CHERRYHILL

DRIVE

4997  
FD 1" I.P. NO TAG  
FLUSH RESET W/  
P.K. NAIL + CITY  
SUR TAG FLUSH

⊙ FD 1" I.P. NO TAG  
FLUSH

5011



△ SET "C" NAIL + CITY TIE TAG ON T/C

- ✕ FD. Ramset Nail on T/C    ● FD. LD. & TK. on T/C    P.K. and City Engineer tag to be set @ surface after street construction is complete. (If possible)
- FD. "C" Nail on T/C    ○ Set LD. & TK. on T/C

Scale: 1" = 30'  
 Date: 02/18/11  
 Drawn by: pw  
 F.B.:  
 TR-Sec: T2SR4W-31

## OFFICIAL TIE PLAT

### CITY OF RIVERSIDE

*These ties are for the purpose of perpetuating the found monumentation. No claim is made as to the relationship of the points or lines shown hereon to true boundary locations.*



Sheet 1 of 1  
 Cadme MB: 41-7