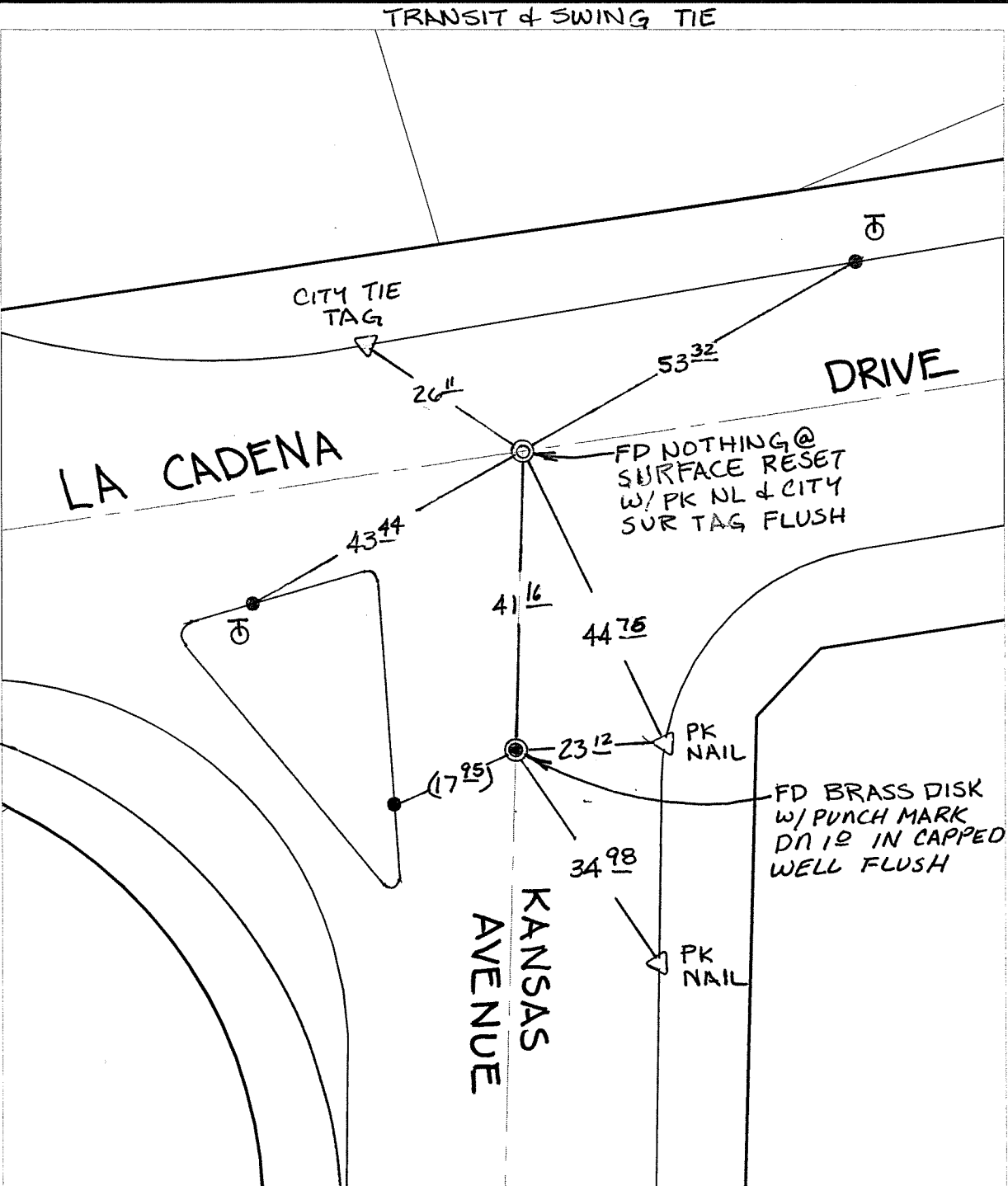


C 12740.71F

Street: LA CADENA DRIVE  
X-Street: KANSAS AVENUE  
OFFICIAL USE ONLY



× FD. Ramset Nail on T/C    ● FD. LD. & TK. on T/C    P.K. and City Engineer tag to be set @ surface after street construction is complete. (If possible)  
 ■ FD. "C" Nail on T/C    ○ Set LD. & TK. on T/C

Scale: 1" = 20'

Date: 01/20/12

Drawn by: pw

F.B.:

TR-Sec: T2SR5W-13

## OFFICIAL TIE PLAT

### CITY OF RIVERSIDE



*These ties are for the purpose of perpetuating the found monumentation. No claim is made as to the relationship of the points or lines shown hereon to true boundary locations.*

Sheet 1 of 1  
Cadme MB: 25-4