

C:\2756.TIF

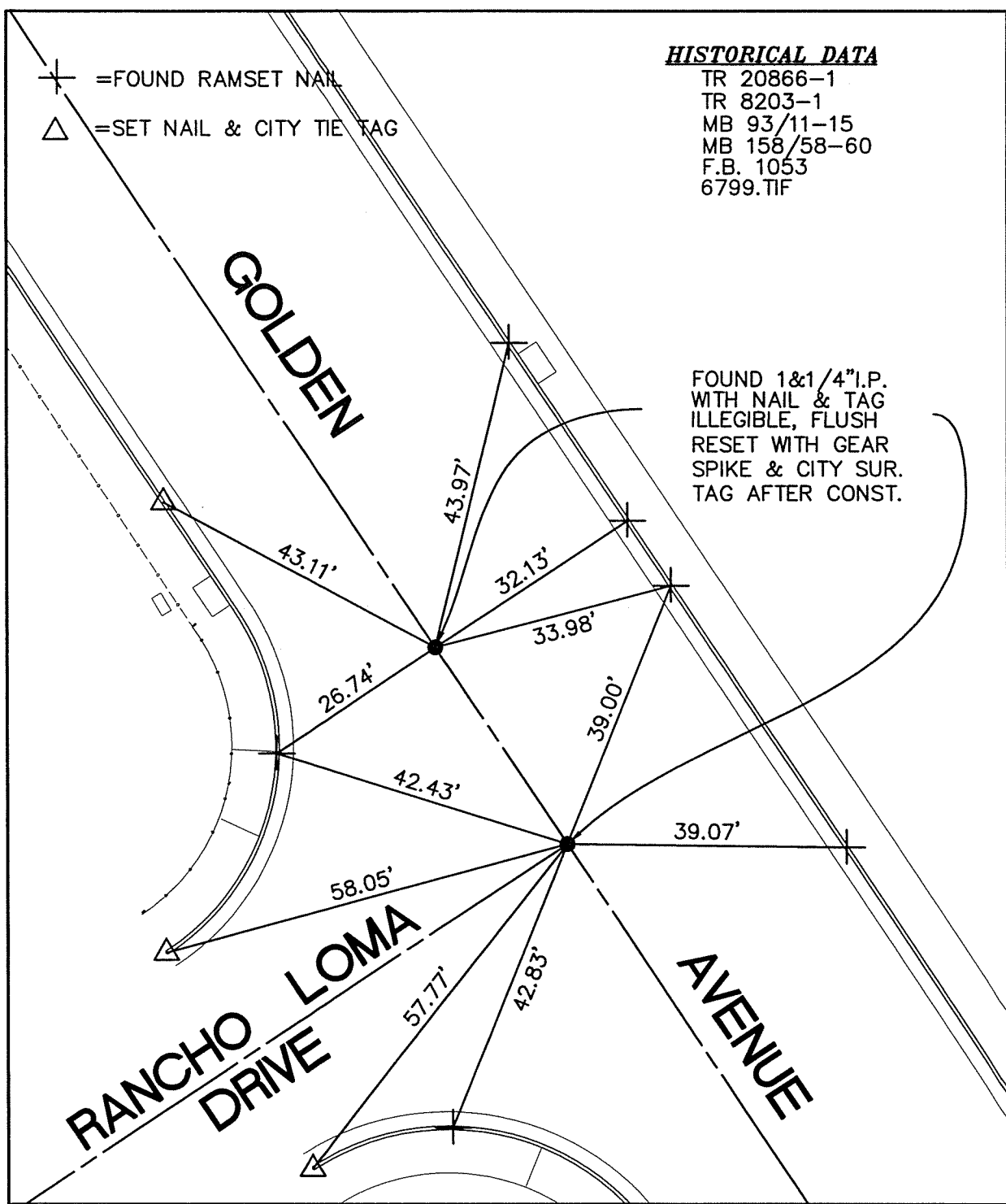
STREET: GOLDEN AVENUE
X-STREET: RANCHO LOMA DRIVE
OFFICIAL USE ONLY

HISTORICAL DATA

TR 20866-1
TR 8203-1
MB 93/11-15
MB 158/58-60
F.B. 1053
6799.TIF

+ = FOUND RAMSET NAIL
△ = SET NAIL & CITY TIE TAG

FOUND 1&1/4" I.P.
WITH NAIL & TAG
ILLEGIBLE, FLUSH
RESET WITH GEAR
SPIKE & CITY SUR.
TAG AFTER CONST.



SCALE: 1"=20'
 DATE: 03/29/2011
 DRAWN BY: B DURENTE
 F.B.: SEE HISTORICAL DATA
 SEC: 14 T.3 S., R. 6 W

OFFICIAL TIE PLAT
 CITY OF RIVERSIDE

THESE TIES ARE FOR THE PURPOSE OF PERPETUATING THE FOUND MONUMENTATION. NO CLAIM IS MADE AS THE RELATIONSHIP OF THE POINTS OR LINES SHOWN HEREON TO TRUE BOUNDARY LOCATIONS



SHEET 1 OF 1