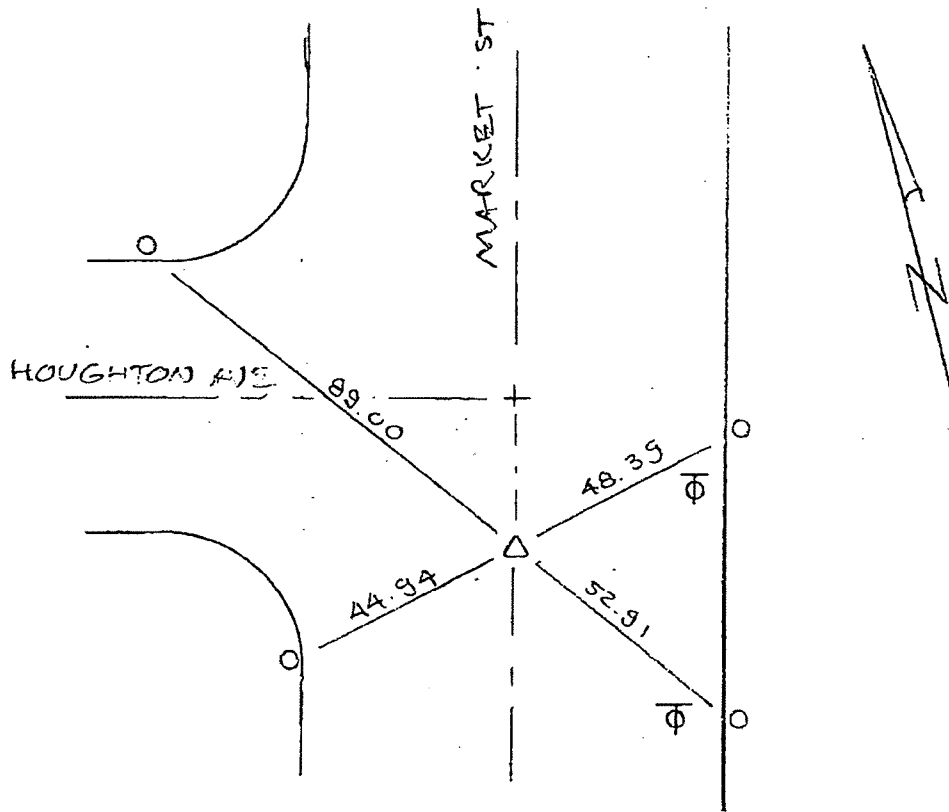


C12761.TIF



- $\Delta$  PO 2" IP IN WELLMON PEL CRFB 530/31  
SET s.w LS 7707
- $\circ$  SET W.T.G LS 7707

NOTE: THESE TIES ARE FOR THE PURPOSE OF PERPETUATING THE FOUND MONUMENTATION. NO CLAIM IS MADE AS TO THE RELATIONSHIP OF THE POINTS OR LINES SHOWN HEREON TO THE TRUE BOUNDARY LOCATIONS.