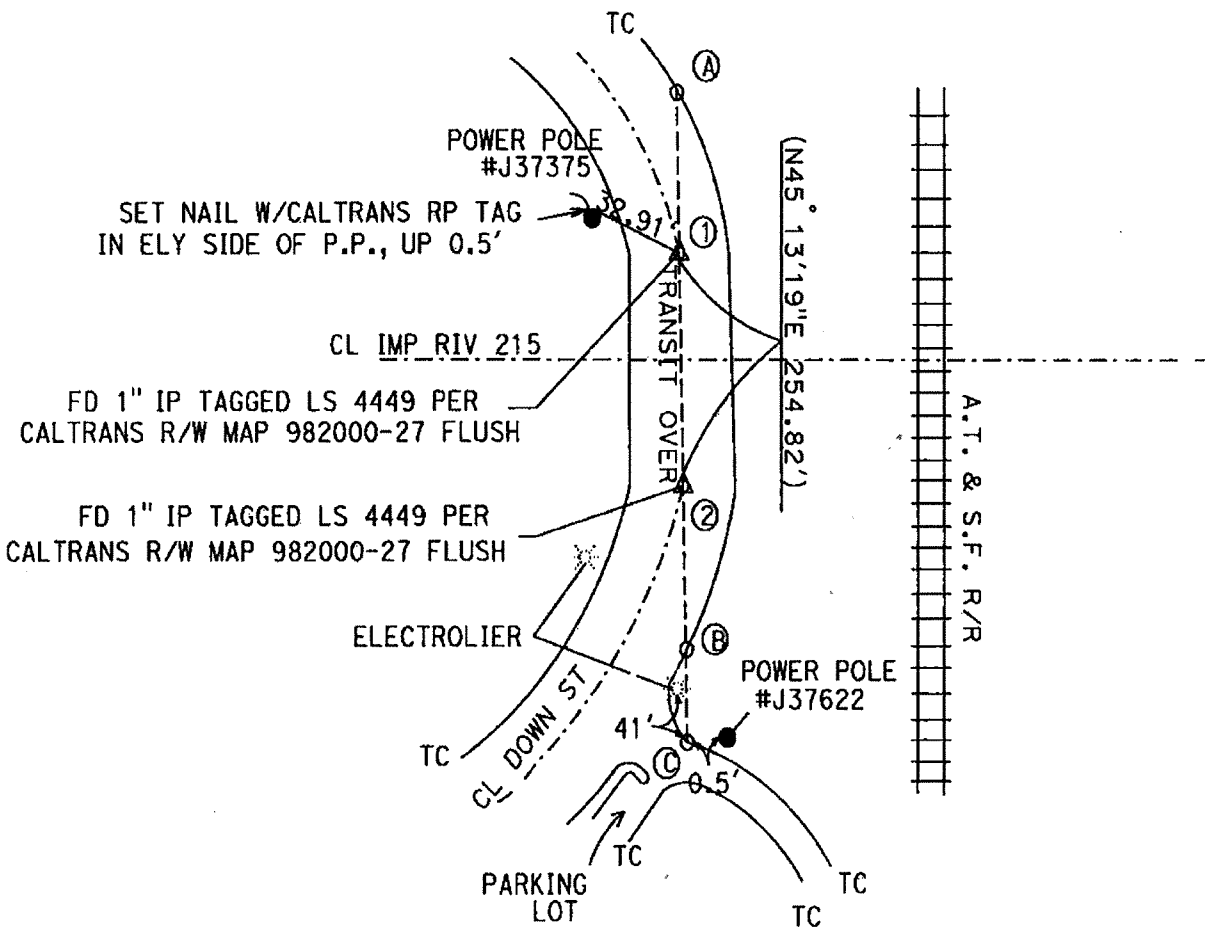


DISTANCE SUMMARY	
DISTANCE	
2-A	= 347.47'
2-1	= 254.99'
2-B	= 158.64'
2-C	= 277.40'



**NOTE:**  
 O - SET NAIL W/CALTRANS RP TAG IN TC  
 MONS (A), (1), (2), (B), & (C) ARE ON LINE  
 ( ) REC. PER CALTRANS R/W MAP 982000-27