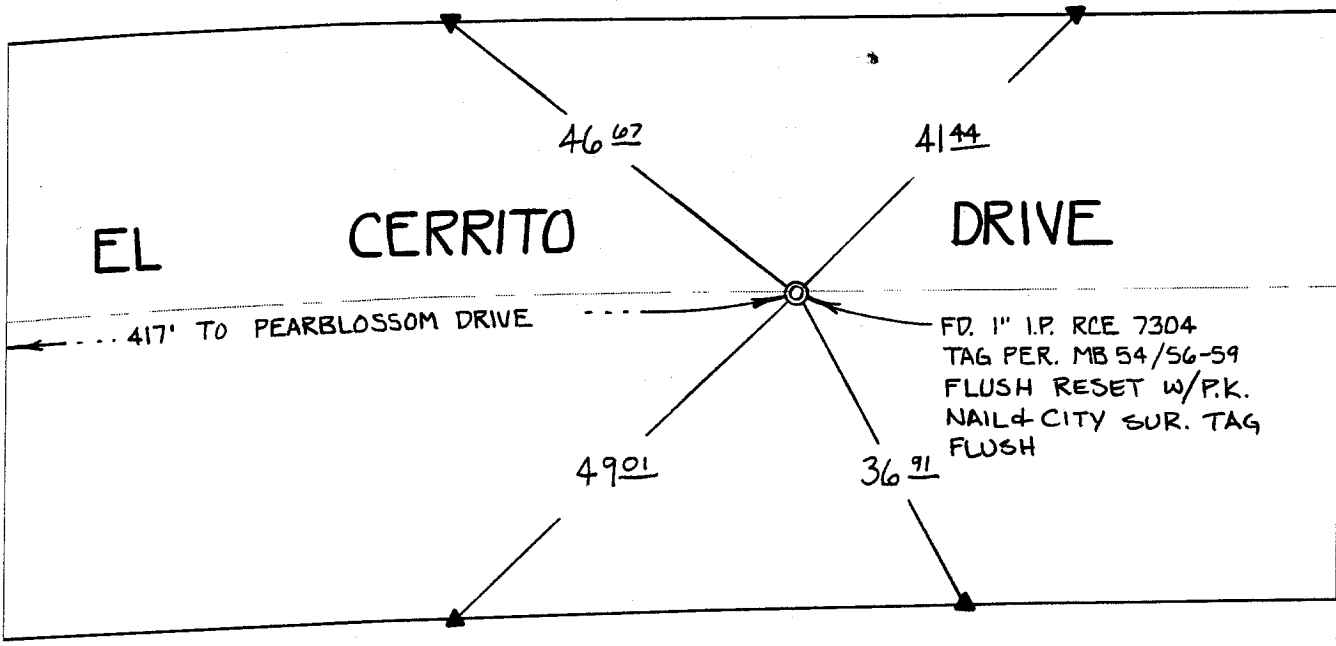


C 2658. TIF

SWING TIES



Street: EL CERRITO DRIVE

X-Street: E OF PEARBLOSSOM DR.

OFFICIAL USE ONLY

NOTE:
ALL DIST. WERE FLAT CHAINED

- ▲ FD. P.K. NAIL ON T/C
- ✕ FD. Ramset Nail on T/C
- FD. LD. & TK. on T/C
- FD. "C" Nail on T/C
- Set LD. & TK. on T/C

Scale: 1" = 20'

Date: 03/9/00

Drawn by: SURVEY

W.O.:

F.B.:

OFFICIAL TIE PLAT
CITY OF RIVERSIDE

These ties are for the purpose of perpetuating the found monumentation. No claim is made as to the relationship of the points or lines shown hereon to true boundary locations.



Sheet 1 of 1

File No.: