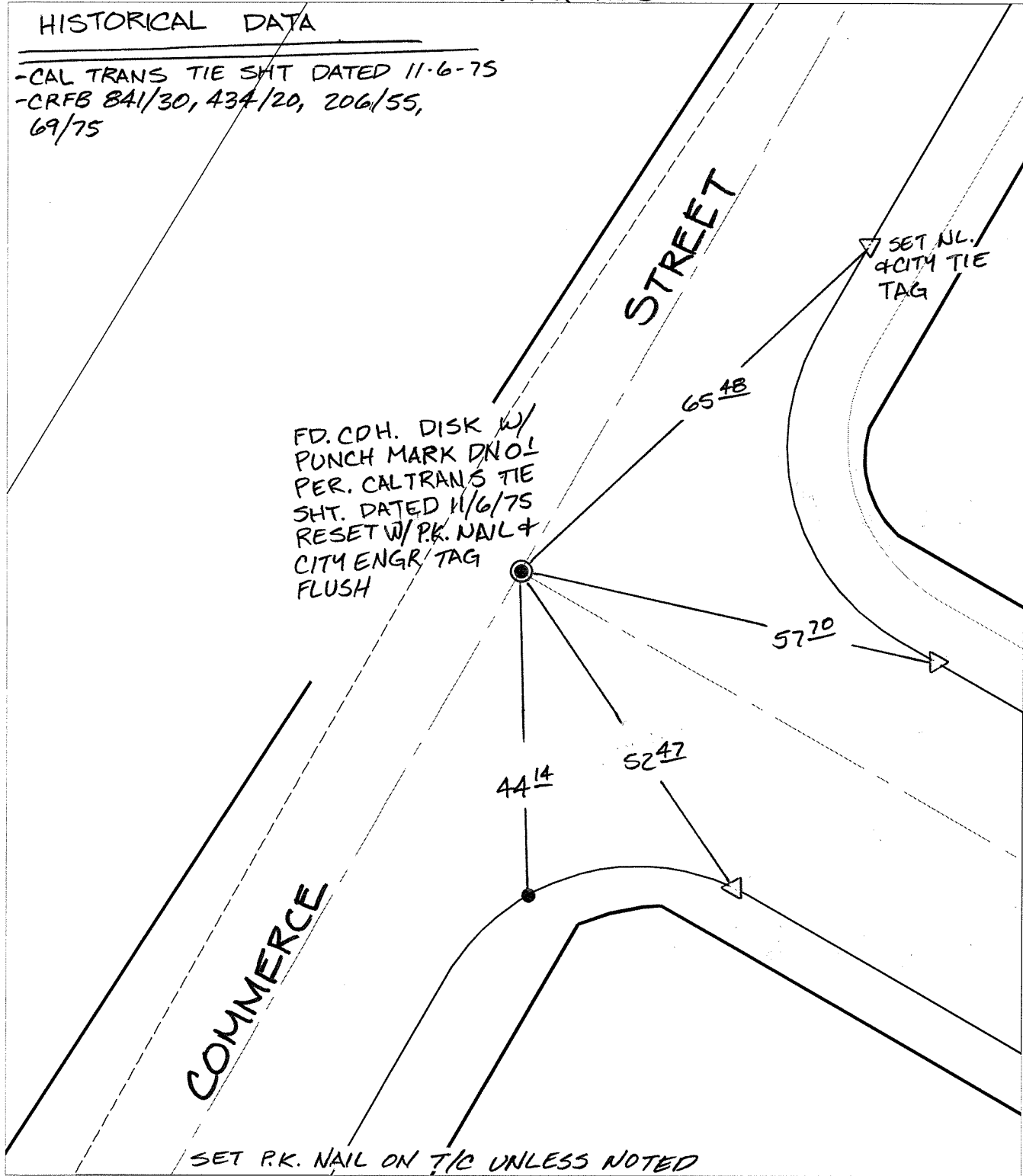


SWING TIES

HISTORICAL DATA

- CAL TRANS TIE SHT DATED 11-6-75
- CRFB 841/30, 434/20, 206/55, 69/75



Street: **COMMERCE STREET**
 C 9826 TIE
 OFFICIAL USE ONLY
 X-Street: **COTTAGE STREET**

- ✕ FD. Ramset Nail on T/C
- FD. LD. & TK. on T/C
- FD. "C" Nail on T/C
- Set LD. & TK. on T/C
- P.K. and City Engineer tag to be set @ surface after street construction is complete. (If possible)

Scale: 1" = 20'
 Date: 05/11/05
 Drawn by: survey
 F.B.:
 TR-Sec: T2SR5W-26

OFFICIAL TIE PLAT
CITY OF RIVERSIDE

These ties are for the purpose of perpetuating the found monumentation. No claim is made as to the relationship of the points or lines shown hereon to true boundary locations.

Sheet 1 of 1
 Cadme MB: 39-4