

Book 1

M.B. 1/30

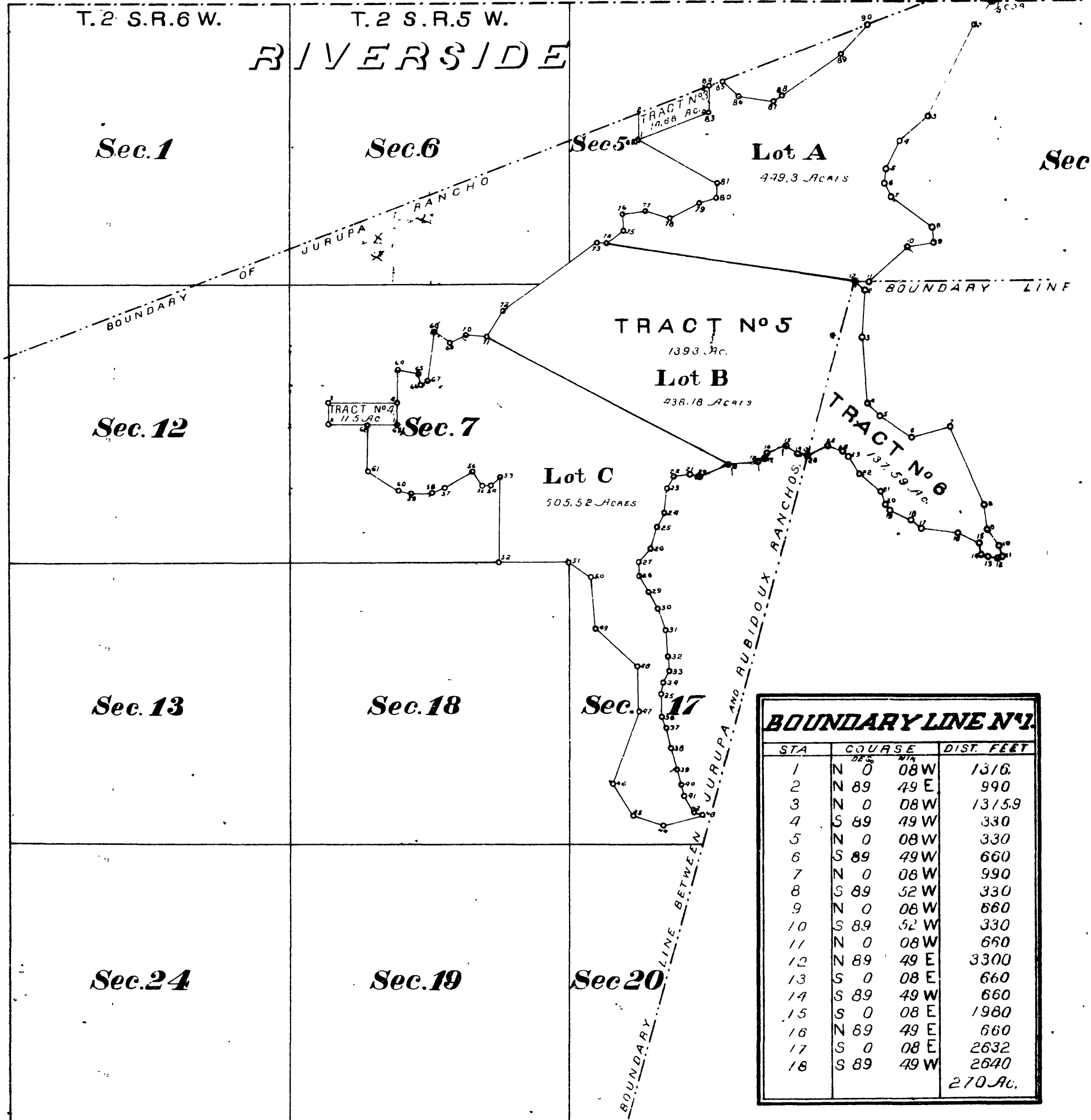
30

# SAN BERNARDINO

T. 1 S. R. 6 W.  
T. 2 S. R. 6 W.

T. 1 S. R. 5 W.  
T. 2 S. R. 5 W.

## RIVERSIDE

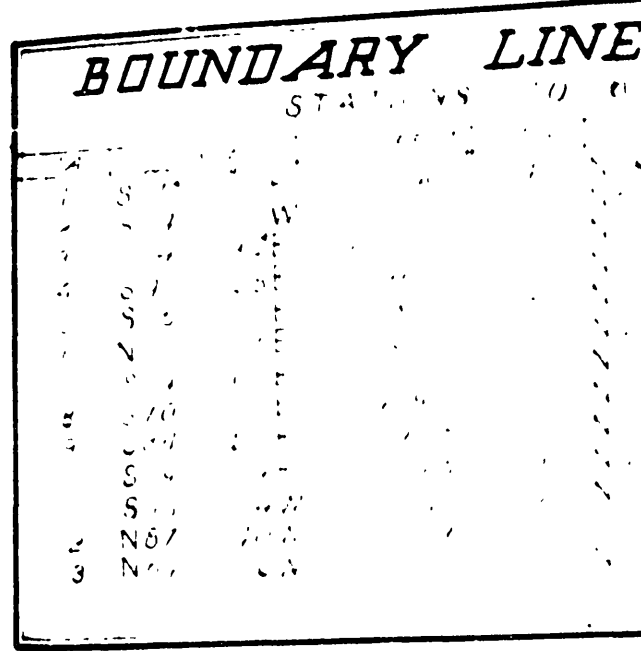
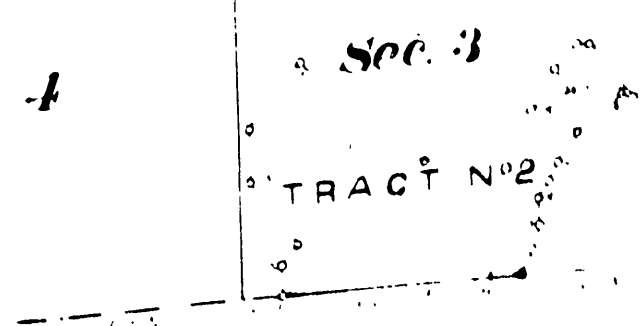


| STA | COURSE    | DIST. FEET |
|-----|-----------|------------|
| 1   | N 89 08 W | 1316.      |
| 2   | N 89 49 E | 990        |
| 3   | N 0 08 W  | 1315.9     |
| 4   | S 89 49 W | 330        |
| 5   | N 0 08 W  | 330        |
| 6   | S 89 49 W | 660        |
| 7   | N 0 08 W  | 990        |
| 8   | S 89 52 W | 330        |
| 9   | N 0 08 W  | 660        |
| 10  | S 89 52 W | 330        |
| 11  | N 0 08 W  | 660        |
| 12  | N 89 49 E | 3300       |
| 13  | S 0 08 E  | 660        |
| 14  | S 89 49 W | 660        |
| 15  | S 0 08 E  | 1980       |
| 16  | N 89 49 E | 660        |
| 17  | S 0 08 E  | 2632       |
| 18  | S 89 49 W | 2640       |
|     |           | 270 AC.    |

| STA  | COURSE      | DIST. FEET | STA | COURSE      | DIST. FEET | STA | COURSE      | DIST. FEET |
|--|-------------|------------|-----|-------------|------------|-----|-------------|------------|
| 1  | S 42° W     | 499.4      | 32  | S 7° 58' W  | 2465       | 63  | N 70° 17' E | 894.6      |
| 2  | S 25° 32' W | 1951.3     | 33  | S 27° 42' W | 270        | 64  | S 77° 50' E | 379.3      |
| 3  | S 49° 37' W | 700        | 34  | S 13° 42' W | 170        | 65  | S 15° 30' E | 220.1      |
| 4  | S 21° 59' W | 600.5      | 35  | S 1° 05' E  | 446.6      | 66  | N 62° 05' E | 129.5      |
| 5  | S 0° 55' W  | 2399       | 36  | S 14° 03' E | 200.4      | 67  | N 6° 18' E  | 919.1      |
| 6  | S 24° 52' E | 2696       | 37  | S 8° 29' E  | 400.5      | 68  | S 48° 53' E | 359.8      |
| 7  | S 56° 38' E | 949.6      | 38  | S 15° 58' E | 399.8      | 69  | N 63° 50' E | 349.3      |
| 8  | S 6° 54' E  | 4002       | 39  | S 5° 57' E  | 300        | 70  | S 82° 00' E | 400        |
| 9  | S 77° 50' W | 5002       | 40  | S 13° 58' E | 200.6      | 71  | N 31° 36' E | 549.5      |
| 10   | S 44° 44' W | 899.3      | 41  | S 33° 41' E | 460.6      | 72  | N 52° 24' E | 2232.9     |
| 11   | N 89° 44' W | 250.4      | 42  | S 43° 15' E | 200.1      | 73  | S 80° 17' E | 159.7      |
| 12   | S 15° 59' W | 3366       | 43  | S 79° 43' W | 835.7      | 74  | N 54° 49' E | 399.8      |
| 13   | N 87° 05' W | 170.4      | 44  | N 73° 43' W | 575        | 75  | N 67° 24' E | 300        |
| 14   | N 63° 32' W | 270.5      | 45  | N 31° 33' W | 700.1      | 76  | N 84° 38' E | 440        |
| 15   | S 71° 34' W | 370.2      | 46  | N 19° 10' E | 1450       | 77  | S 72° 06' E | 470        |
| 16   | S 29° 56' W | 129        | 47  | N 4° 20' W  | 850        | 78  | N 63° 37' E | 610        |
| 17   | S 56° 39' W | 1423       | 48  | N 48° 47' W | 1050.2     | 79  | N 64° 23' E | 334        |
| 18   | S 78° 40' W | 501.3      | 49  | N 2° 13' W  | 1009.8     | 80  | N 0° 04' W  | 265        |
| 19   | S 71° 17' W | 533.4      | 50  | N 46° 24' W | 530        | 81  | N 50° 09' W | 1515       |
| 20   | N 87° 03' W | 219.8      | 51  | S 88° 41' W | 1320.1     | 82  | N 69° 31' E | 1400       |
| 21   | S 73° 32' W | 281.2      | 52  | N 0° 08' W  | 1622.2     | 83  | N 0° 04' W  | 487.6      |
| 22   | S 25° 39' W | 267.8      | 53  | S 50° 46' W | 228.2      | 84  | N 69° 04' E | 230.4      |
| 23   | S 8° 53' W  | 446        | 54  | S 81° 52' W | 139.8      | 85  | S 46° 44' E | 382.5      |
| 24   | S 20° 12' W | 298.6      | 55  | N 53° 53' W | 319.9      | 86  | S 85° 32' E | 650.1      |
| 25   | S 17° 28' W | 429.6      | 56  | S 60° 39' W | 599.9      | 87  | N 66° 13' E | 160        |
| 26   | S 34° 28' W | 320        | 57  | S 73° 41' W | 200        | 88  | N 54° 27' E | 1339.5     |
| 27   | S 3° 45' W  | 228.8      | 58  | S 85° 31' W | 399.8      | 89  | N 47° 13' E | 751.4      |
| 28   | S 17° 10' E | 349.7      | 59  | N 76° 20' W | 219.6      | 90  | N 69° 02' E | 2449.5     |
| 29   | S 36° 58' E | 280.4      | 60  | N 60° 25' W | 809.9      | 91  | S 8° 45' E  | 407.4      |
| 30   | S 20° 39' E | 450.4      | 61  | N 0° 55' W  | 862        |     |             |            |
| 31   | S 3° 20' E  | 480.1      | 62  | N 88° 35' E | 558        |     |             |            |
| TOTAL AREA 1393 ACRES<br>514 AC. IN SAN BERNARDINO CO. |             |            |     |             |            |     |             |            |

COUNTY

COUNTY



A.C.M.

State of California  
County of Los Angeles

State of California

NOTARIAL SEAL

MB 1/30

MB 1/30