

Division of Title

County of San Bernardino California, State of California

#2

U. S. of America July 15th 1870
to Henry Huntstowner Record Book of Patents Page 76 Aug 19th 1872

Henry Huntstowner May 31st 1874
to W. T. Hayward Recorded Apr 11th 1876 Record Book Page 472

W. T. Hayward July 10th 1874
to S. C. Evans Recorded Nov 28th 1874 Book A Page 250 Undivided half

S. C. Evans January
to W. T. Hayward Recorded Book Page

W. T. Hayward January
to S. C. Evans Recorded Book Page

Riverside San Bernardino Co California
January, 29th 1880

This certifies that the accompanying plat is a copy of the survey and subdivision of the following tract of land located in San Bernardino Co California, in Township three (3) south Range five (5) west San Bernardino meridians, viz:

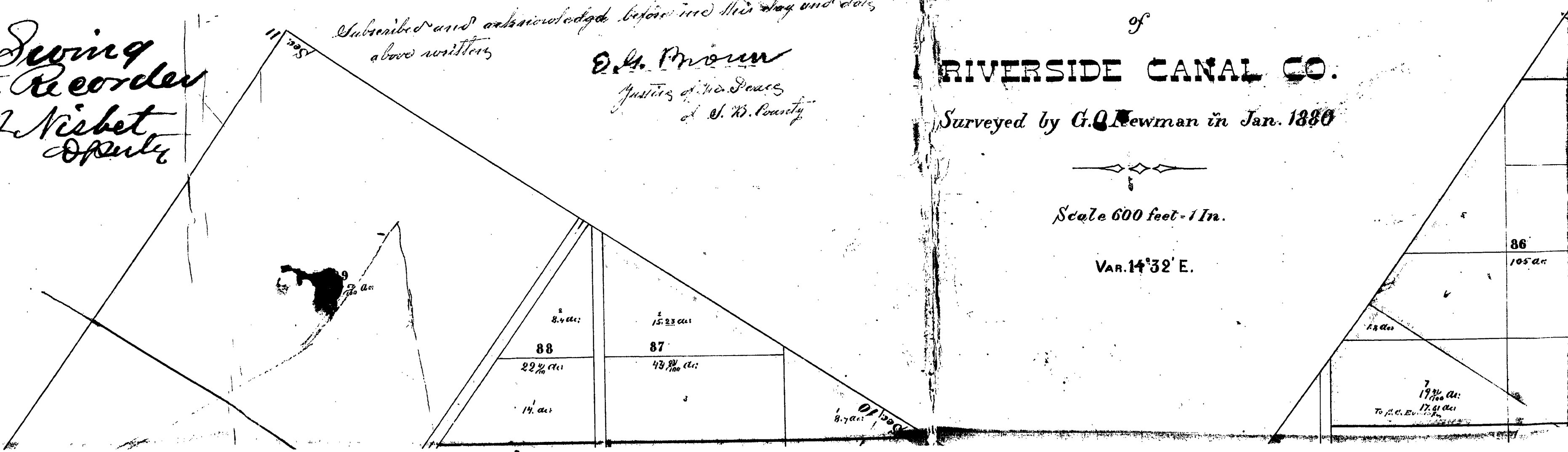
West half of Sec 2	East half Sec 4	East half Sec 17	W. 1/4 Sec 19
S. W. 1/4 " 11	part south half " 8	S. W. 1/4 " 17	part W. 1/4 " 19
South half of " 3	part E. 1/4 " 8	part E. W. 1/4 " 17	all of " 30
part E. 1/4 " 3	East half " 9	part East half " 18	West half " 21
part E. W. 1/4 " 3	W. 1/4 " 9	part S. W. 1/4 " 18	
North half " 10	part E. W. 1/4 " 9	East half " 19	

that the lines in red ink indicate the section lines according to United States survey and the figures in red the number of the sections according to said survey. The lines in black the subdivision into blocks and lots according to survey of G. C. Newman. The meandered line through the north part of said plat is the line of the upper Canal of the Riverside Canal and Irrigating Company, and the southern boundary of the lands hereof, conveyed by W. T. Hayward and S. C. Evans to the Riverside Canal and Irrigating Company by deed dated March 4th 1876. The large figures in black indicate the number of the blocks and the small figures in red the number of the lots. All lots contain twenty acres except the fractional lots which contain the number of acres specified upon the plat. The streets and avenues indicated are the extension of streets and avenues from the lands of the D. L. & P. Co. and are 80 feet in width except Arlington Avenue through Section two and E. 1/4 Section 3 across which is laid out but 40 feet width along the north line of said sections. The figures in blue ink along the east and south boundary of the above described land indicate number of acres in fractional lots along said boundary.

Witness our hands and seals this
29th day of January A. D. 1880
W. T. Hayward
S. C. Evans

Filed February 4th 1880
James W. Deering
County Recorder
By E. A. Nesbet
Deputy

Subscribed and acknowledged before me this day and date
above written
E. A. Mrown
Justice of the Peace
of S. B. County



BEET

of the lands of

W. T. HAYWARD & S. C. EVANS

T. 3 S. R. 5 W. S. B. M.

Lying above Canal No 1

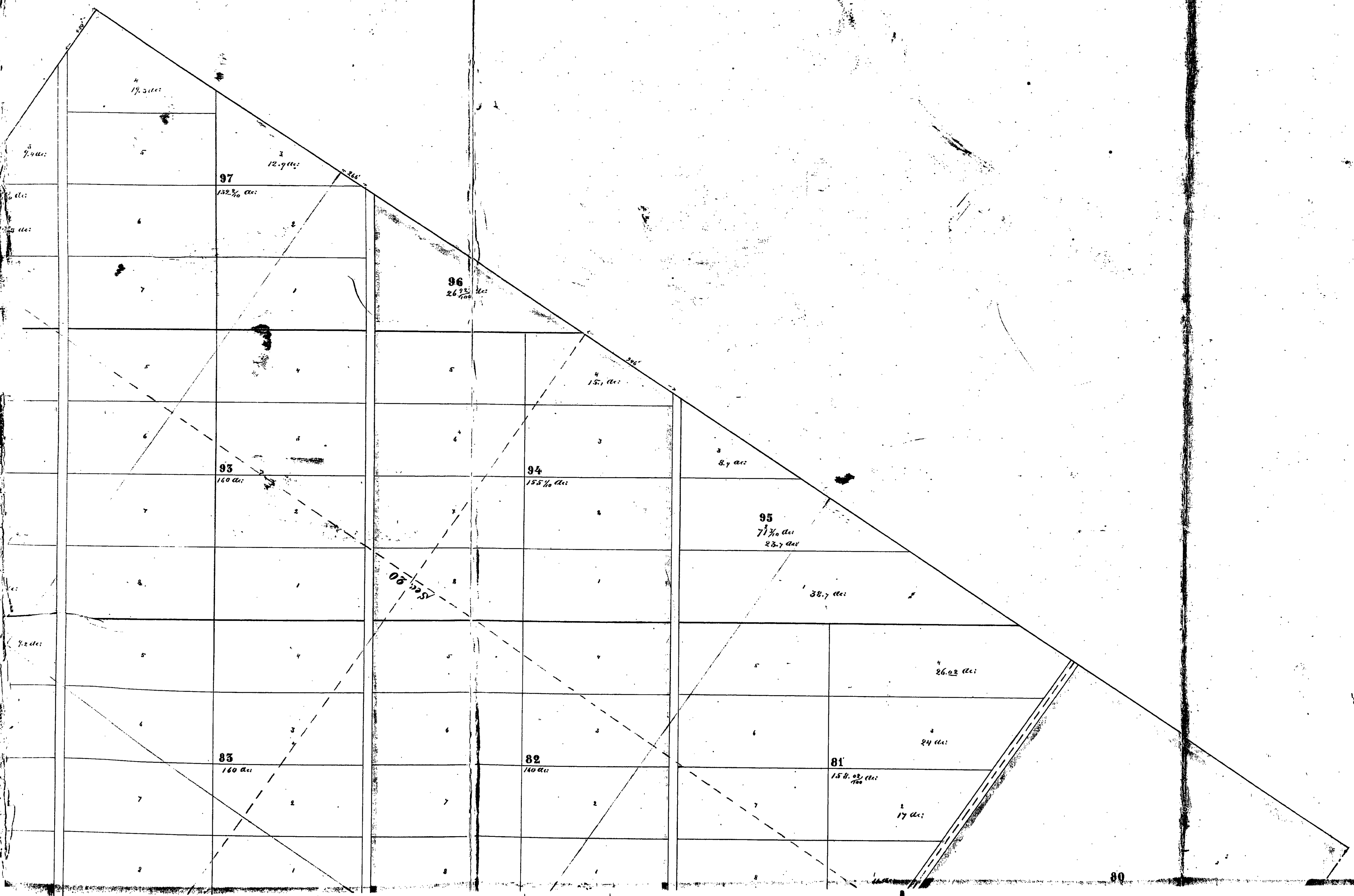
RIVERSIDE CANAL CO.

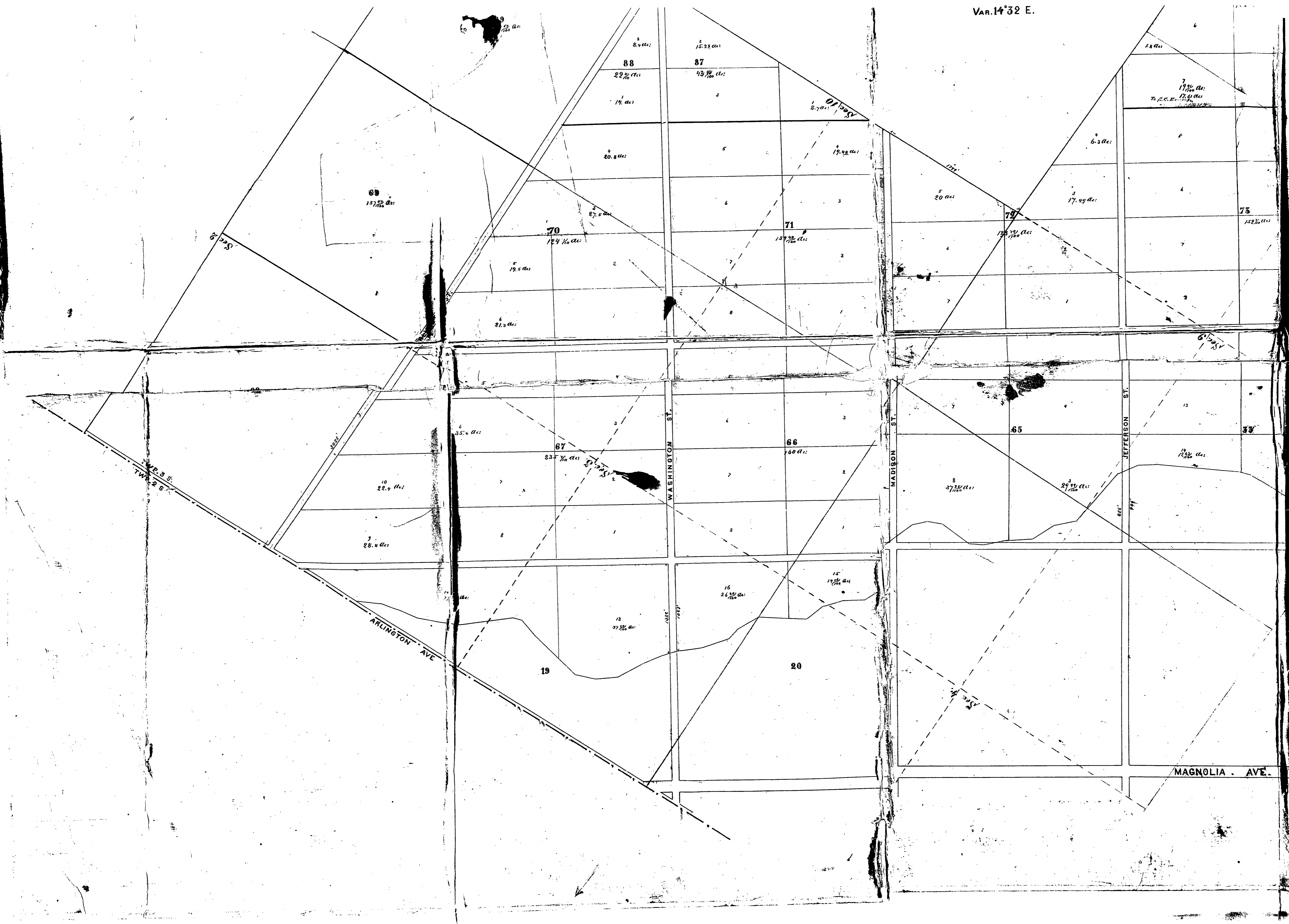
Surveyed by G. Q. Newman in Jan. 1880

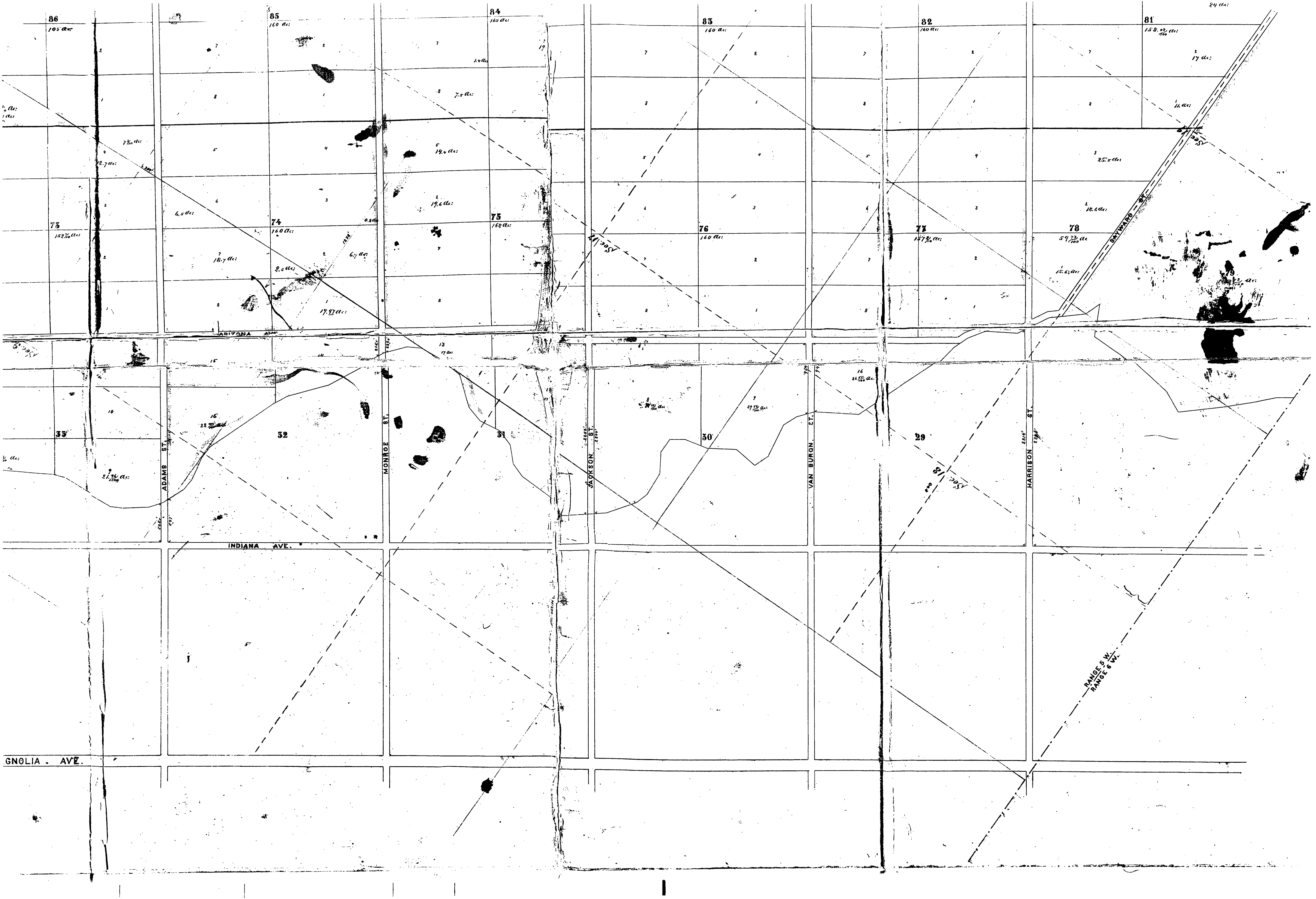
Scale 600 feet = 1 In.

Var. 14° 32' E.

2







86
105 ac

85
160 ac

84
160 ac

83
160 ac

82
160 ac

81
158.82 ac

73
152.7 ac

74
160 ac

75
160 ac

76
160 ac

77
157.4 ac

78
59.72 ac

ARIZONA AVE.

ADAMS ST.

MONROE ST.

JACKSON ST.

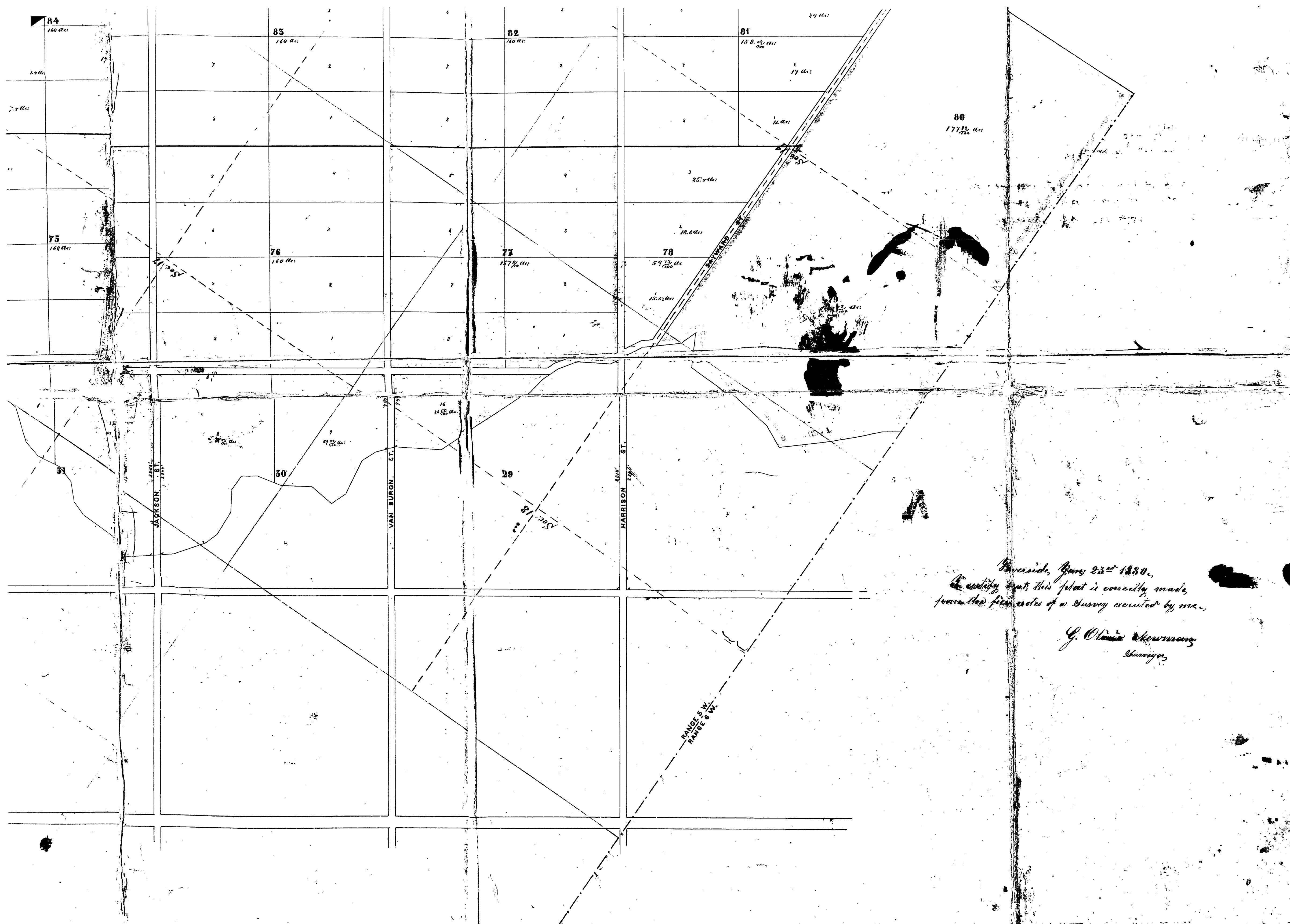
VAN BURON ST.

HARRISON ST.

INDIANA AVE.

GNOLIA AVE.

RANGE 5 W.
RANGE 6 W.



This is a copy of the original plat made
 from the field notes of a survey executed by me.

G. Olinde Keweenaw
 Surveyor