

7

This is to certify that the undersigned are the proprietors and owners of all that real property now situate in Riverside County but formerly in San Bernardino County, State of California bounded and described as follows:

Commencing at the corner to sections 19 and 30 Township 3 South Range 6 West and sections 24 and 25 in Township 3 South Range 7 West, being the most southerly point of the La Sierra Rancho; thence running N 39 1/2 E 220 feet to the most southerly point of Lot 17 Block 2; thence N 75 1/2 E 286 feet, N 38 1/2 E 158 feet, N 74 1/2 E 166 feet, to the south west corner of lot 14 Block 2; thence N 87 1/2 E 159 feet, N 76 1/2 E 220 feet, N 84 1/2 E 55 feet, S 67 1/2 E 65 feet, S 33 E 231 feet, S 33 E 15 feet, S 30 E 135 feet, S 14 W 200 feet, S 28 1/2 W 100 feet, S 8 W 66 feet, S 10 1/2 E 154 feet, S 56 W 142 feet, S 47 1/2 W 100 feet, S 35 1/2 E 190 feet, N 15 W 54 feet, S 79 E 110 feet, N 57 1/2 E 100 feet, N 13 E 220 feet, N 75 E 132 feet, N 29 1/2 E 48 feet, N 68 1/2 W 203 feet, N 24 1/2 W 130 feet, N 12 1/2 E 185 feet, N 36 1/2 E 175 feet, N 57 1/2 E 127 feet, N 58 1/2 E 220 feet, N 37 E 60 feet, N 65 E 56 feet, N 12 E 17 feet, N 89 1/2 W 323 feet, N 22 1/2 W 66 feet, N 39 W 141 feet, S 88 1/2 W 57 feet, N 69 W 118 feet, N 49 W 155 feet, N 49 W 155 feet, N 17 1/2 W 368 feet, N 1/2 W 89 feet, N 4 E 294 feet, N 1 1/2 E 268 feet, N 6 W 78 feet, N 6 1/2 W 165 feet, S 79 W 148 feet, N 69 W 101 feet to the most northerly point of lot 13 Block 2; thence running across a wide gulch N 26 W 405 feet to the most southerly point in Lot 16 Block 1; thence N 50 1/2 E 200 feet, N 5 E 25 feet, N 6 1/2 W 149 feet, N 11 1/2 W 190 feet, to the north east corner of Lot 16 Block 1

Thence across Sierra Avenue N 43 E 30 feet, thence running round Lot 14 Block 1 S 89 1/2 E 150 feet, N 48 E 125 feet, N 19 E 60 feet, N 25 1/2 W 21 feet, N 18 1/2 E 300 feet, N 13 1/2 E 95 feet, N 15 1/2 W 95 feet, N 75 W 242 feet, N 1 1/2 W 149 feet, N 52 E 100 feet, N 31 E 100 feet, N 7 W 48 feet, S 85 E 85 feet, N 83 E 124 feet, N 52 1/2 E 100 feet, N 33 E 114 feet, N 21 E 129 feet, N 8 E 200 feet, N 24 1/2 E 100 feet, N 43 E 100 feet, N 23 1/2 E 75 feet, N 11 1/2 W 510 feet, N 18 W 100 feet, S 83 W 79 feet, S 7 E 425 feet, S 82 1/2 W 420 feet, S 1 W 219 feet, S 20 1/2 W 100 feet, N 72 W 28 feet, N 11 E 100 feet, N 25 1/2 E 180 feet, N 47 1/2 E 200 feet, N 41 W 117 feet, S 77 W 76 feet, N 4 E 70 feet, N 57 1/2 W 49 feet, S 66 W 72 feet, S 44 1/2 W 152 feet, S 63 1/2 W 167 feet, S 22 W 92 feet, N 51 1/2 W 35 feet, S 47 1/2 W 79 feet, N 57 1/2 W 41 feet, S 63 1/2 W 60 feet, S 28 1/2 W 218 feet, S 16 W 22 feet, to the south west corner of Lot 7 Block 1;

Thence running S 36 1/2 W 149 feet, S 43 W 100 feet, S 72 E 72 feet, S 18 E 165 feet, N 86 1/2 W 31 feet, N 43 W 100 feet, N 71 W 100 feet, S 25 W 171 feet, S 75 E 65 feet, S 7 E 69 feet, S 23 W 224 feet, N 43 1/2 W 161 feet, S 20 W 114 feet, S 46 W 131 feet, N 65 W 45 feet, S 28 1/2 W 20 feet, S 59 1/2 E 67 feet, S 16 E 128 feet, S 25 1/2 E 100 feet, S 37 E 150 feet, S 69 E 60 feet, N 62 E 93 feet, S 81 E 100 feet, S 65 E 100 feet, N 86 E 100 feet, S 49 1/2 E 100 feet, S 6 W 157 feet, S 35 1/2 E 77 feet, N 86 E 162 feet, S 84 E 100 feet, S 2 E 136 feet, S 36 1/2 E 183 feet, S 19 1/2 E 100 feet, S 27 E 100 feet, S 61 E 361 feet, S 84 1/2 E 268 feet to the aforesaid most southerly point in Lot 16 Block 1;

Thence back across the aforesaid gulch S 26 E 405 feet to the aforesaid most northerly point in Lot 13 Block 2;

Thence running round the boundary of Block 2 S 56 1/2 W 157 feet, N 39 W 48 feet, S 30 1/2 W 72 feet, N 3 1/2 E 150 feet, N 65 1/2 W 35 feet, S 4 W 215 feet, N 63 1/2 W 82 feet, N 78 W 105 feet, thence across Ford Street N 78 W 30 feet, thence N 78 W 45 feet, N 13 E 91 feet, N 50 W 75 feet, S 63 W 45 feet, N 52 W 127 feet, S 68 W 95 feet, N 78 W 65 feet, N 67 1/2 W 100 feet, N 71 W 100 feet, N 44 1/2 W 230 feet, N 23 1/2 W 99 feet, N 63 W 55 feet, S 77 W 100 feet, S 54 1/2 W 219 feet, N 74 W 20 feet, S 68 W 100 feet, S 55 W 279 feet, thence across Joy Street S 55 W 45 feet, thence along Joy Street N 35 1/2 W 339 feet, N 50 1/2 W 132 feet, N 50 1/2 W 232 feet, N 35 W 57 feet, N 65 W 89 feet, S 52 1/2 W 385 feet along Gota Street, thence across Gota Street N 38 W 45 feet, N 38 W 215 feet, N 20 1/2 E 285 feet, N 18 1/2 W 165 feet, N 39 W 255 feet, N 63 1/2 W 187 feet, N 41 1/2 W 260 feet, N 45 1/2 W 141 feet, N 52 E 112 feet, N 31 1/2 W 247 feet, N 8 W 42 feet, N 26 S 12 feet, S 75 W 100 feet, S 28 W 149 feet, S 35 1/2 W 219 feet, S 11 1/2 W 132 feet, S 64 1/2 E 38 feet, S 30 1/2 W 133 feet, S 4 E 112 feet, S 39 1/2 W 30 feet, S 40 E 166 feet, S 68 E 64 feet, S 56 1/2 E 92 feet, N 34 E 53 feet, S 51 E 338 feet, S 83 E 84 feet, S 46 1/2 E 110 feet, N 52 1/2 E 225 feet, S 39 E 300 feet, S 6 1/2 E 18 feet, S 38 1/2 E 255 feet, thence across Gota Street S 38 1/2 E 45 feet, S 38 1/2 E 300 feet, S 38 1/2 E 570 feet, N 51 E 153 feet, S 82 1/2 E 141 feet, N 51 1/2 E 515 feet, thence across Joy Street N 51 1/2 E 45 feet, S 43 E 225 feet, S 58 E 170 feet, S 45 E 130 feet, S 20 E 100 feet, S 36 E 130 feet, N 33 E 30 feet, N 88 E 70 feet, N 84 E 45 feet, S 39 E 95 feet, S 77 E 85 feet, S 67 W 110 feet, N 76 1/2 W 70 feet, N 33 W 45 feet, S 57 W 40 feet, S 71 E 172 feet, S 71 E 73 feet, N 62 1/2 E 95 feet, S 34 E 82 feet, S 53 1/2 W 55 feet, S 75 1/2 E 76 feet, S 10 1/2 E 48 feet, S 44 1/2 E 100 feet, S 66 E 70 feet, S 84 E 200 feet, N 55 E 145 feet, S 38 1/2 E 65 feet, S 8 W 155 feet, S 60 W 90 feet, S 7 E 380 feet, S 54 1/2 E 60 feet to the aforesaid most southerly point in Lot 17 Block 2;

Thence S 39 1/2 W 220 feet to the point of beginning being the aforesaid corner common to sections 19 & 30 T. 3 S. R. 6 W & sections 24 & 25 T. 3 S. R. 7 W.

The above described plot contains a part of the Rancho el Subrante de San Jacinto, La Sierra Rancho and the Auburndale Colony, and we hereby adopt the accompanying map as a subdivision thereof.

The undersigned hereby reserve to themselves their heirs or assigns the right to use Joy Street, Gota Street, Ford Street and Lima Avenue as delineated upon accompanying map for the purpose of laying pipes or other conduits for carrying water across or along said streets and avenues as well as the right to use said streets and avenues for laying and maintaining street railroads thereon and to run thereon cars propelled by horse steam electricity or other motive power.

Neither the filing nor the filing and recording of this map nor any reference thereto in any deed of conveyance shall be construed to give the right to any person corporation or municipality except the undersigned their heirs or assigns to abridge the above reservations.

We hereby further certify that the acreage contained in each Lot is given in Red Lot numbers and dimensions in block and that this map is drawn to a scale of 200 feet to 1 inch

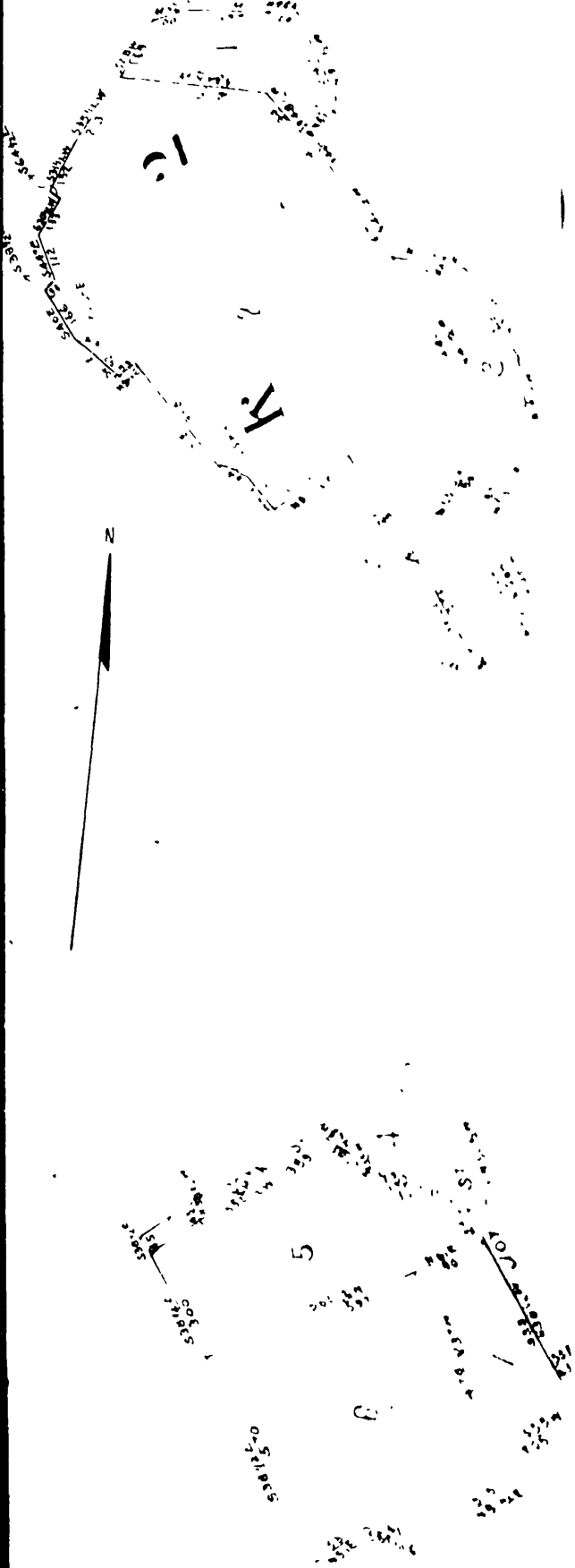
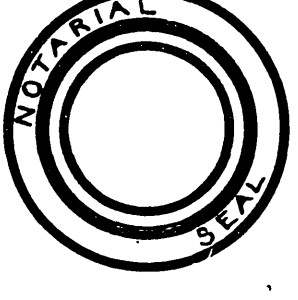
In witness whereof we have set hereunto our names this twenty second day of June 1899

John Fletcher Moulton and Herbert Bulkley Praed
By W.E. Pedley their Attorney in fact

STATE OF CALIFORNIA } 35.
COUNTY OF RIVERSIDE

On this twenty second day of June in the year A. D. 1899 before me Raymond Best a Notary Public in and for said County of Riverside State of California personally appeared W.E. Pedley personally known to me to be the person described in and whose name is subscribed to the annexed instrument as the Attorney-in-fact of John Fletcher Moulton and Herbert Bulkley Praed thereto as principals and his own name as Attorney in fact

Witness my hand and Notarial Seal this the day and year first above written
RAYMOND BEST NOTARY PUBLIC in and for RIVERSIDE COUNTY STATE OF CALIFORNIA

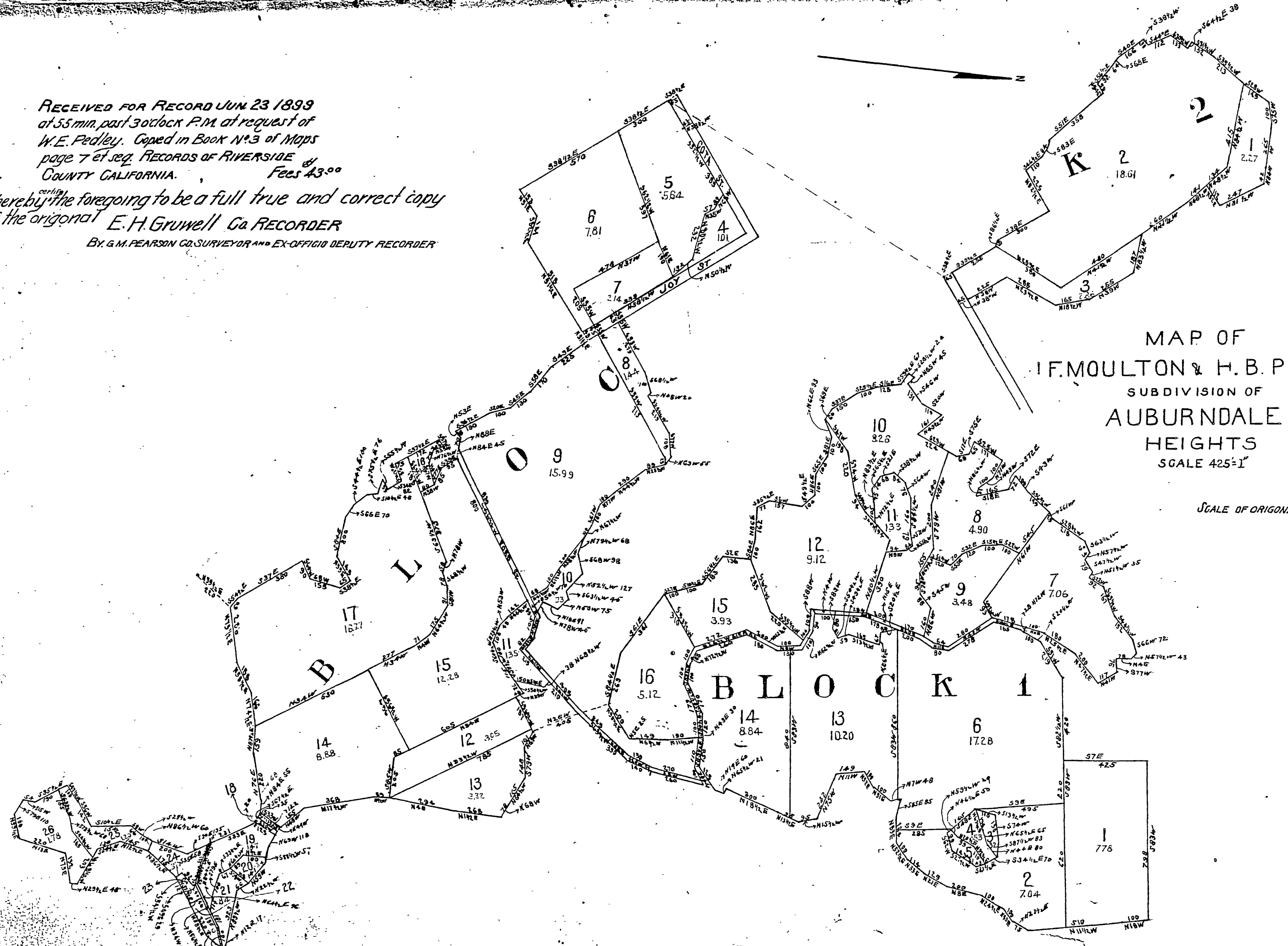


RECEIVED FOR RECORD JUN 23 1899
W. E. PEDLEY, CLERK OF THE COUNTY RECORDS OF RIVERSIDE COUNTY CALIFORNIA
I have this day read and find correct and true
W. E. PEDLEY, CLERK OF THE COUNTY RECORDS OF RIVERSIDE COUNTY CALIFORNIA

RECEIVED FOR RECORD JUN 23 1899
at 55 min. past 3 o'clock P.M. at request of
W.E. Pedley. Copied in Book N^o 3 of Maps
page 7 et seq. RECORDS OF RIVERSIDE &
COUNTY CALIFORNIA. Fees \$43.00

Thereby certifying the foregoing to be a full true and correct copy
of the original E. H. Gruwell Co. RECORDER

By G. M. PEARSON CO. SURVEYOR AND EX-OFFICIO DEPUTY RECORDER



MAP OF
I. F. MOULTON & H. B. PRAED'S
SUBDIVISION OF
AUBURN DALE
HEIGHTS
SCALE 425'-1"

SCALE OF ORIGINAL 200'-1"

For instrument referring to this Map
See book 8 of Misc., page 251

M.B. 3/B

M.B. 3/B