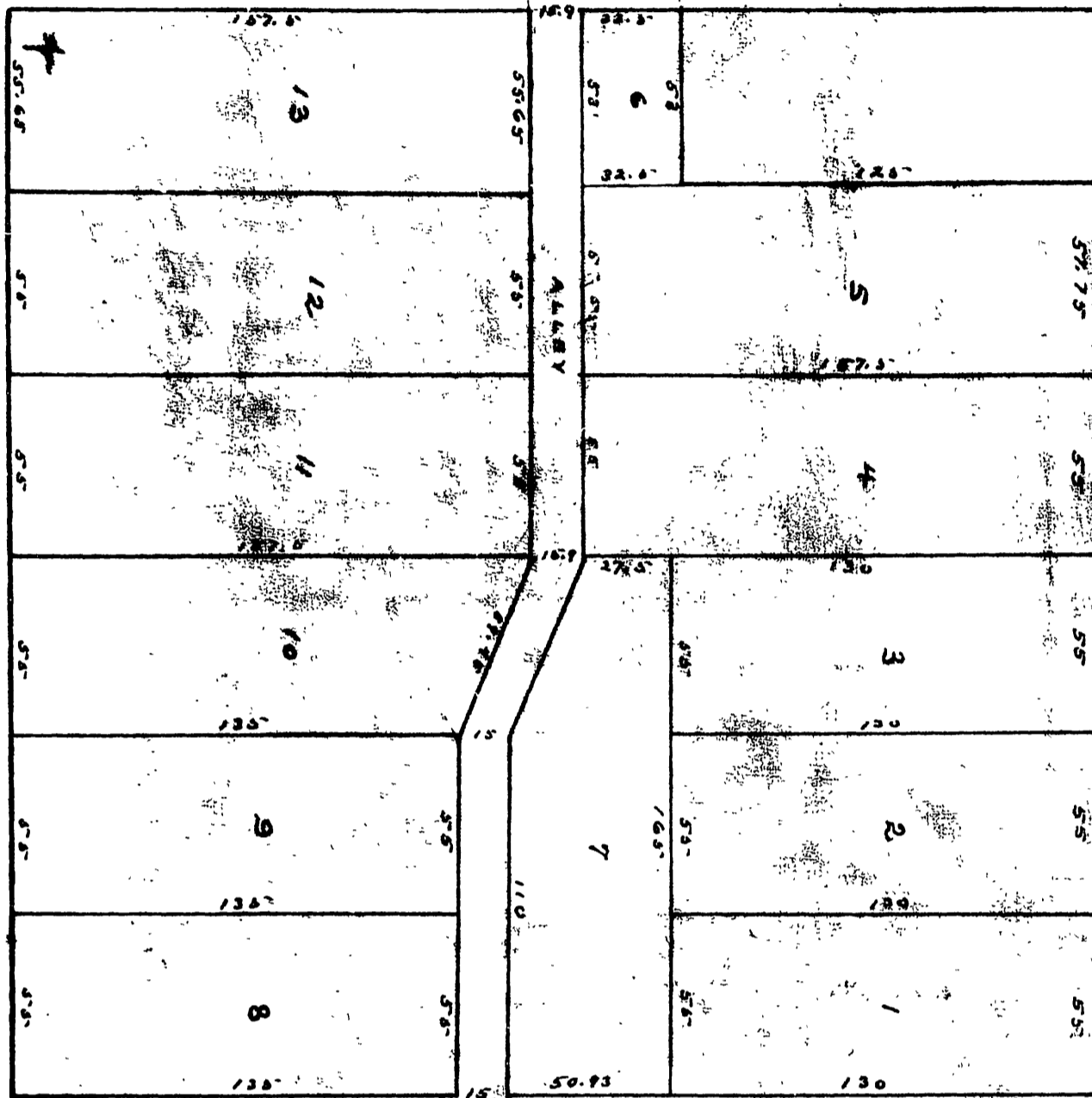


M.B. 3/19  
Book No. 1 within City limits

SEVENTH ST.

CHESTNUT ST.

SIXTH ST.



ALMOND ST.

Map of

JOHN STONES RESUBDIVISION

OF

Block 6 Range 9 Goldsworthy + Higbie

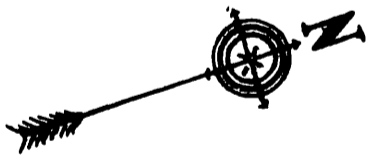
Survey of

RIVERSIDE CAL.

Scale 1 inch = 50 feet

X. Sanborn C. E.

March 1900



Received for record  
 SEP 5 1900  
 55 vol. part 9 of block 6, range 9, at  
 request of John D. Stone  
 Deputy Recorder  
 18  
 City of Riverside, California.  
 J. D. Stone  
 300

I, John Stone, hereby execute and adopt this Map of the re-subdivision of Block 6 Range 9 of the City of Riverside, County of Riverside, State of California, to designate the different parts of land which is represented, as divided into Lots and Alleys.

*John Stone*

Witness my hand and seal this 21st day of August, 1900.

Notary Public  
 in and for the County of Riverside,  
 State of California

M.B. 3/19

50

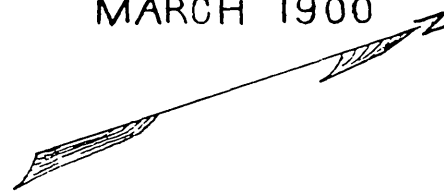
Book 1

**MAP**  
OF  
**JOHN STONES RESUBDIVISION**  
OF BLOCK 6 RANGE 9 GOLDSWORTHY & HIGBIE  
SURVEY OF  
**RIVERSIDE**  
**CAL.**

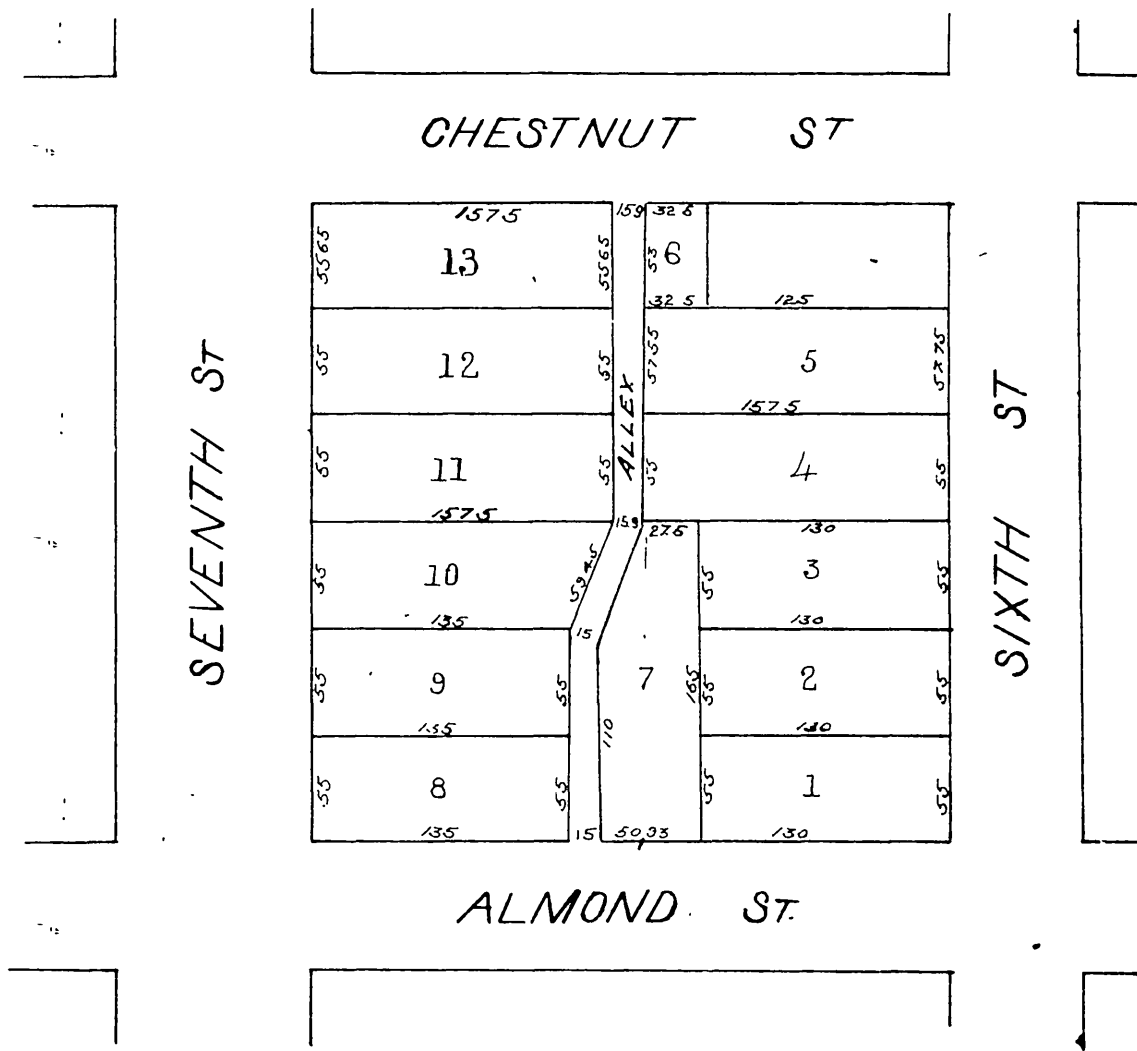
SCALE 1 INCH = 100 FEET

K. SANBORN C.E.

MARCH 1900



SCALE of Original 50ft = 1 inch

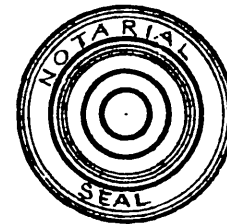


I John Stone, hereby execute and adopt this Map of the re-subdivision of Block 6 Range 9 of the City of Riverside, County of Riverside, State of California, to designate the different parts of Land which is represented as divided into lots and Alleys John Stone

Subscribed and sworn to before me,

this 21<sup>st</sup> day of August, 1900

W. P. SQUIRES, Notary Public in and for the County of Alameda State of California



Received for Record at 55 min past 9 o'clock A.M. Sep 5<sup>th</sup> 1900 at request of Jno. T. Jarvis  
Copied in Book N<sup>o</sup> 3 of Maps page 19 et seq Records of Riverside County CALIFORNIA

E. H. GRUWELL RECORDER Fees 3.00

I hereby certify the foregoing to be a full, true and correct copy of the original, E. H. Gruwell Co Recorder by G. M. Pearson Co Surveyor and Ex-Officio Dep. Co. Recorder

MAP OF  
HORTONS SUBDIVISION  
OF THE

MB 3 / 19