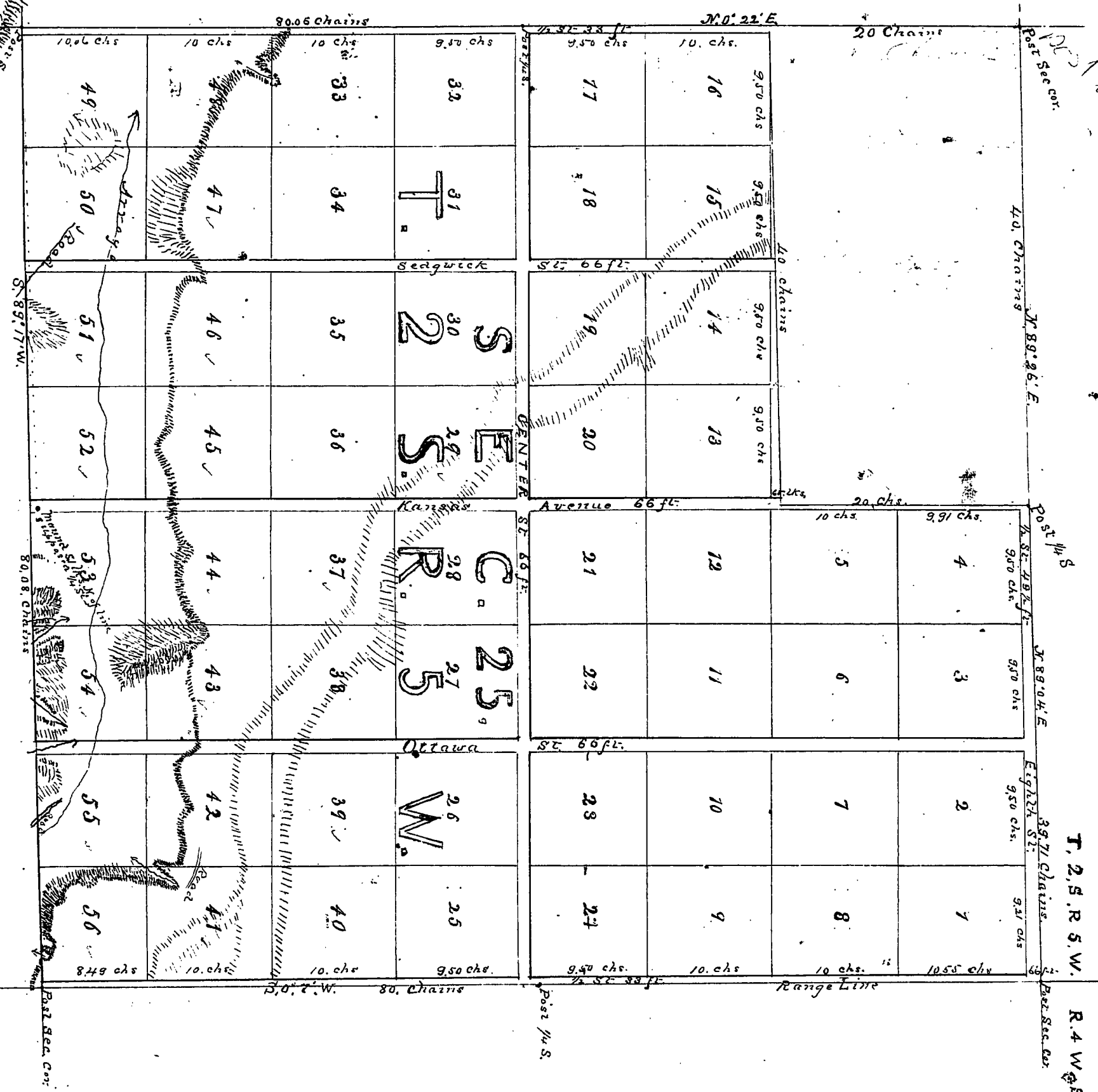


19



SCALE 10 CHAINS 1 INCH.

*Filed at the request of
 W. D. Dally
 Surveyor & Co. 6th-1885
 Seeger Block
 County Clerk*

CASTLEMAN'S

Map

ADDITION TO RIVERSIDE.

SAN BERNARDINO COUNTY CAL.

Being a portion of Sec 25. T. 25. R. 5. W. S. B. M.

Showing subdivision and numbering of lots.

Surveyed and Mapped in 1885.

*J. E. Dumbell
 W. D. Dally Surveyor*