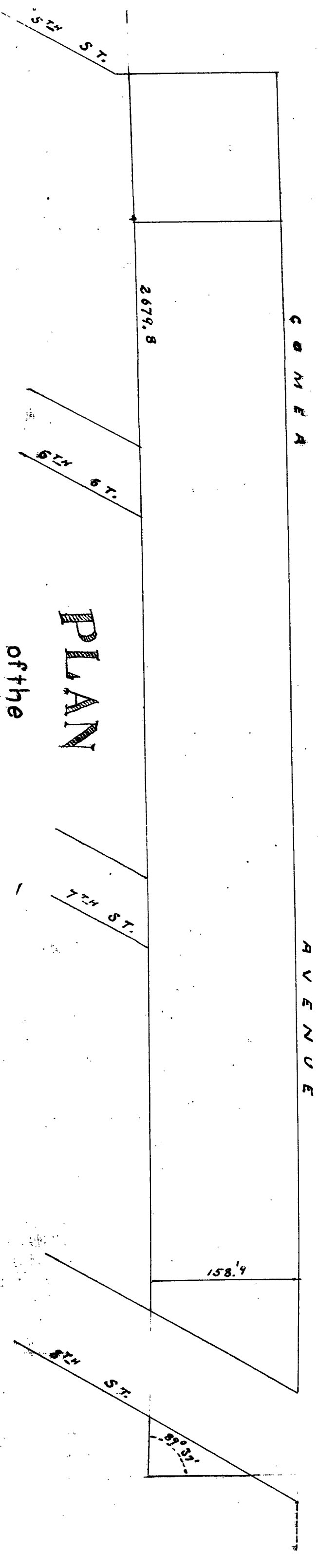
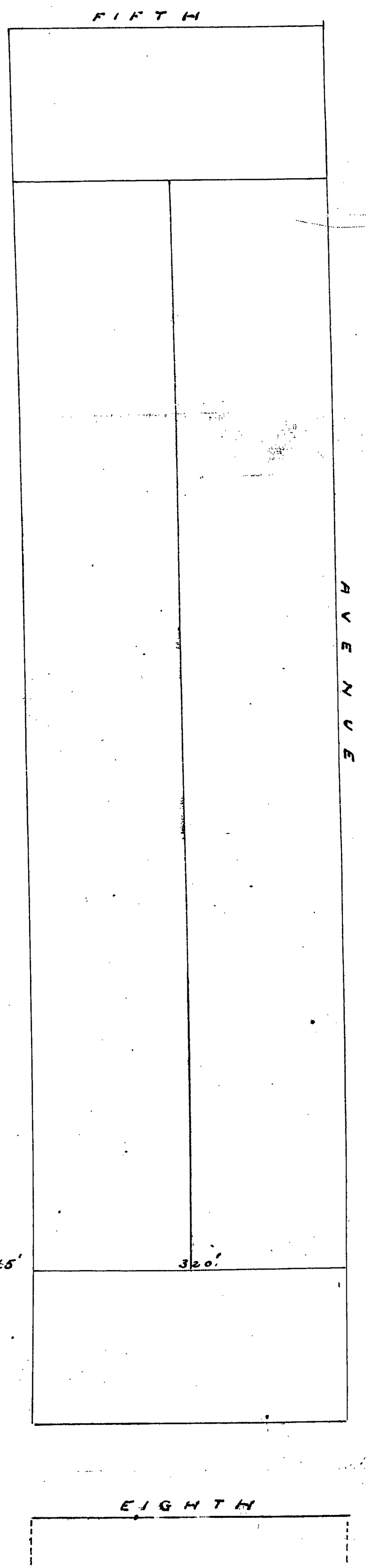
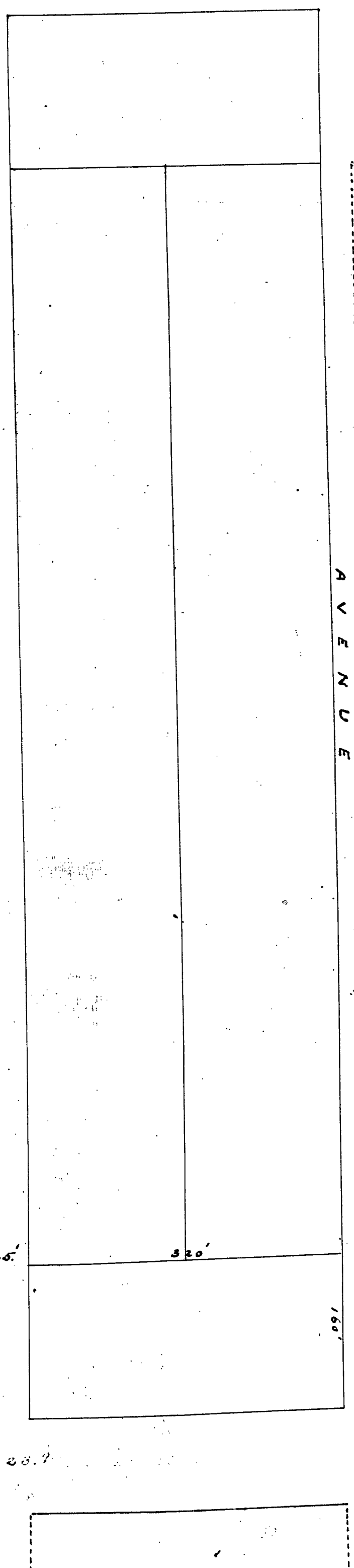
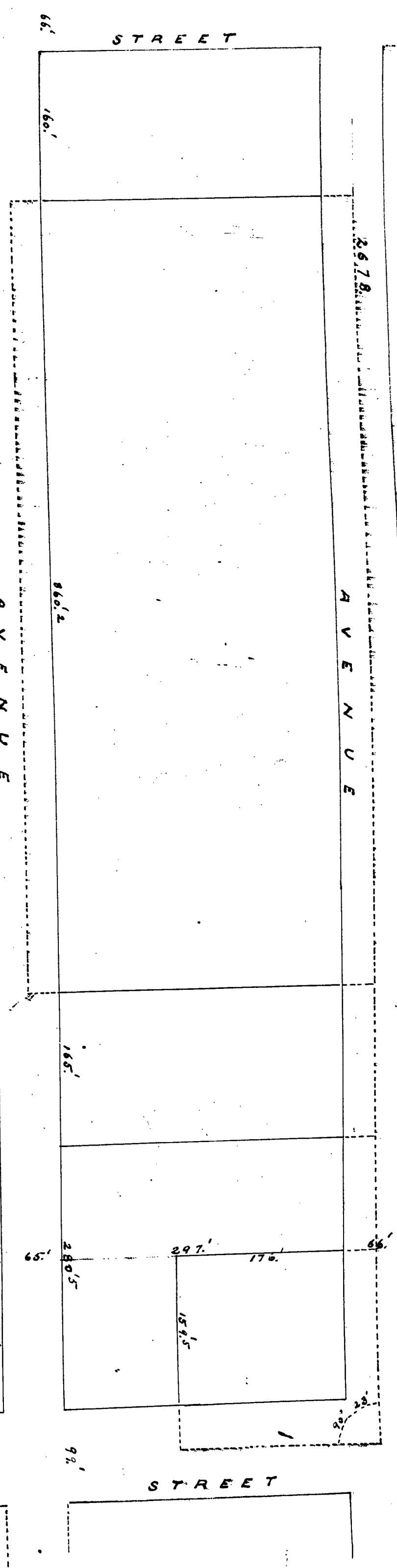


67  
34



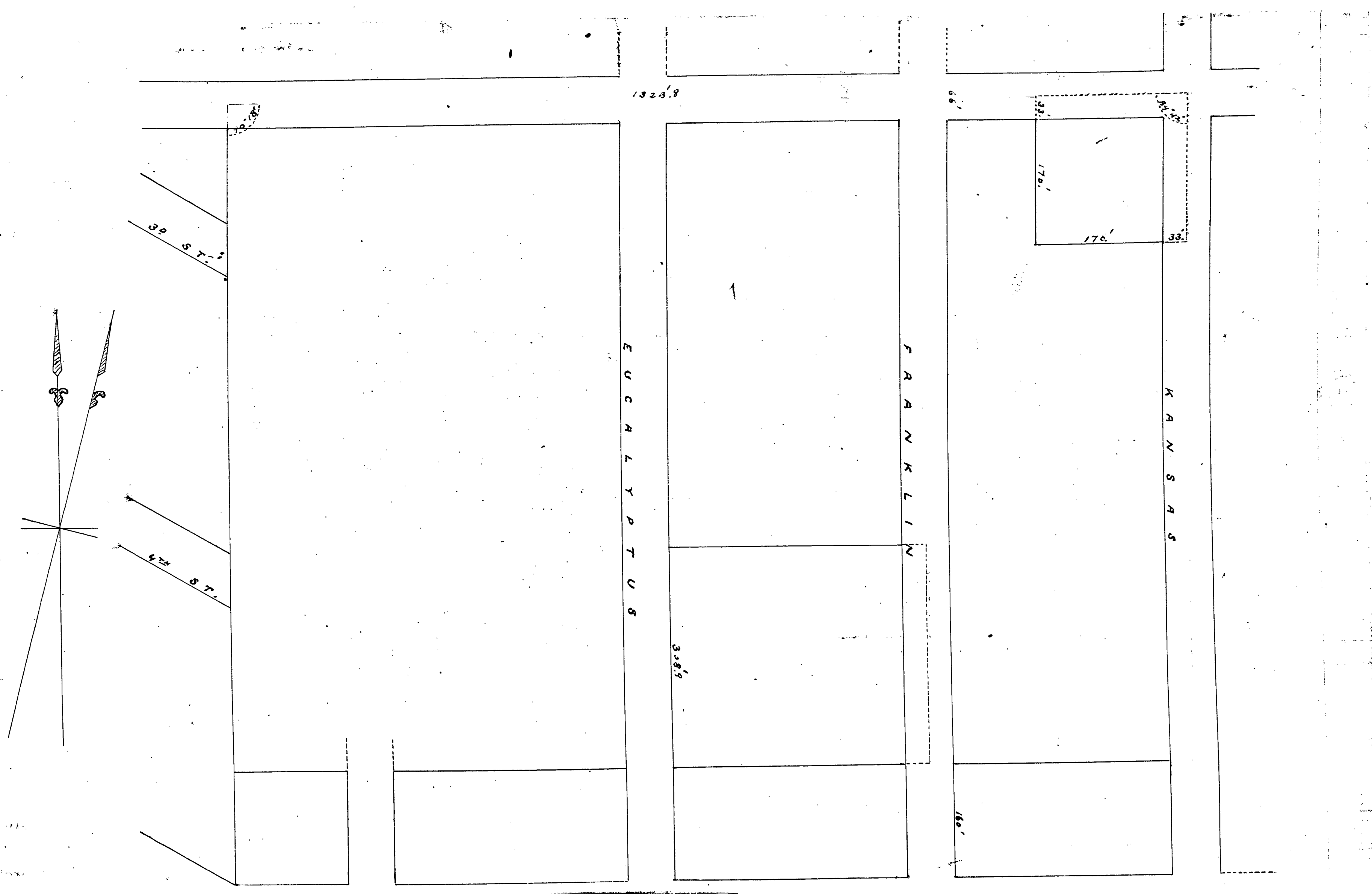
# H. P. KYES TRACT.

RIVERSIDE, CALIFORNIA.

Scale 100ft. = 1in.

Total Area 81<sup>1</sup>/<sub>2</sub> Acres.

*Filed as required at  
 H. P. Kyes, Dec 23/16.  
 Frank Allen, G. Boarder  
 1551 1/2 S. 1st St. San Diego, Cal.  
 J. M. ...  
 ...*



67A  
9/1/9