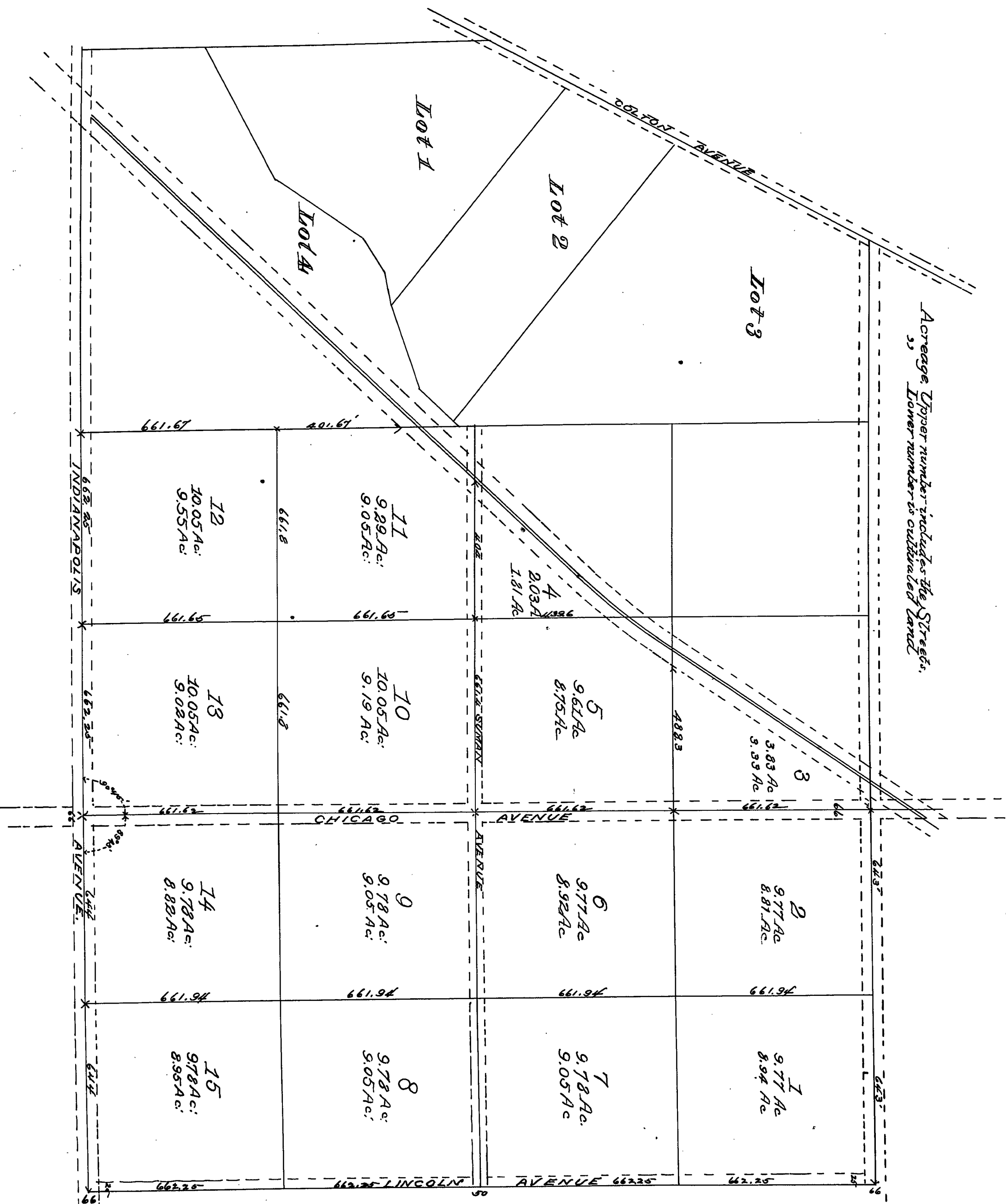


30



MAP
OF THE
WILBUR TRACT

AS SURVEYED BY
G. O. NEWMAN

Being a subdivision of Lots 3 & 4 section 18 town two(2) south range four(4) west and east half of south east quarter of section 13 town two(2) south range five(5) west San Bernardino Base and meridian
SCALE 300 FT. = 1 INCH
MAY 10th 1887.

Filed at request of A. H. Natterger May 10th 1887 and recorded June 25th 1887.

By *W. P. Brown* County Recorder.
W. P. Brown