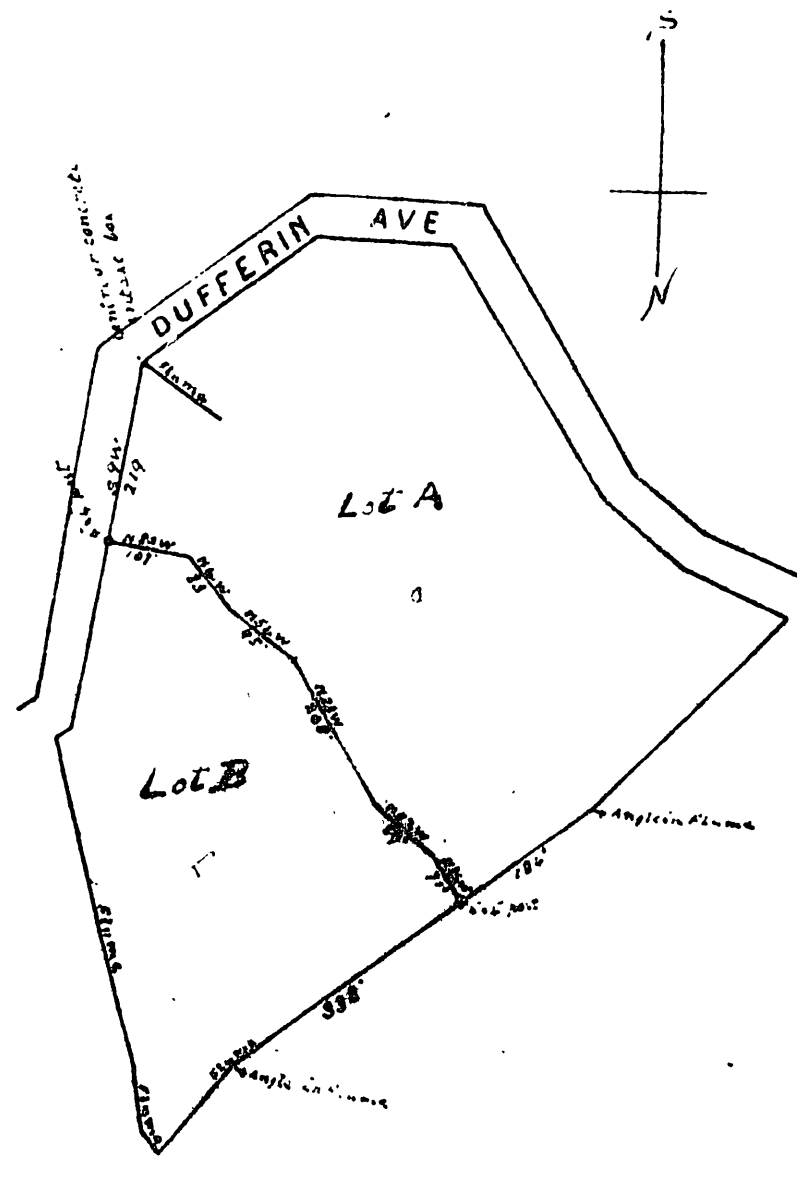


Filed at Request
 Books & Counters
 This 10
 at 10 Min past 4 o'clock P.M.
 of the County Recorder
 By J. R. [Signature]

Map
 showing subdivision of
Lot 20 Block 11
 Praed & Moulton's addition to
 "Arlington Heights"
 and more especially the location of
 a line dividing that westerly portion planted
 to Lemons from that westerly portion planted to
 Oranges. Said line is marked at its terminal points
 by post-holes set by four inches, set at certain distances
 from known points as shown on this map and the course of
 said line, are as set forth on this map.
 The corner boundaries of Lot 20 Block 11 as here shown are a true
 copy of the boundaries of said Lot as shown on the Map filed in the
 Office of the County Recorder of Riverside County on the Sixth
 day of September 1895 in book 2 of maps at page 2.
 The westerly portion of said Lot planted to Lemons and
 referred to above contains 4.28 acres more or less.

Surveyed and plotted by
 W. H. Praed
 March 5/1903.
 Will Kathleen Selway
 Commissioned and proprietor of the land
 shown on said map.



Scale 200' = 1"

I, the undersigned, do hereby certify that the above described map was prepared by me or under my supervision and that the same is a true and correct copy of the original map on file in my office.
 I, the undersigned, do hereby certify that the above described map was prepared by me or under my supervision and that the same is a true and correct copy of the original map on file in my office.
 I, the undersigned, do hereby certify that the above described map was prepared by me or under my supervision and that the same is a true and correct copy of the original map on file in my office.

resub. of lot 20 blk 11
 MOULTON + PRAED
 Add to Arl. Hts.