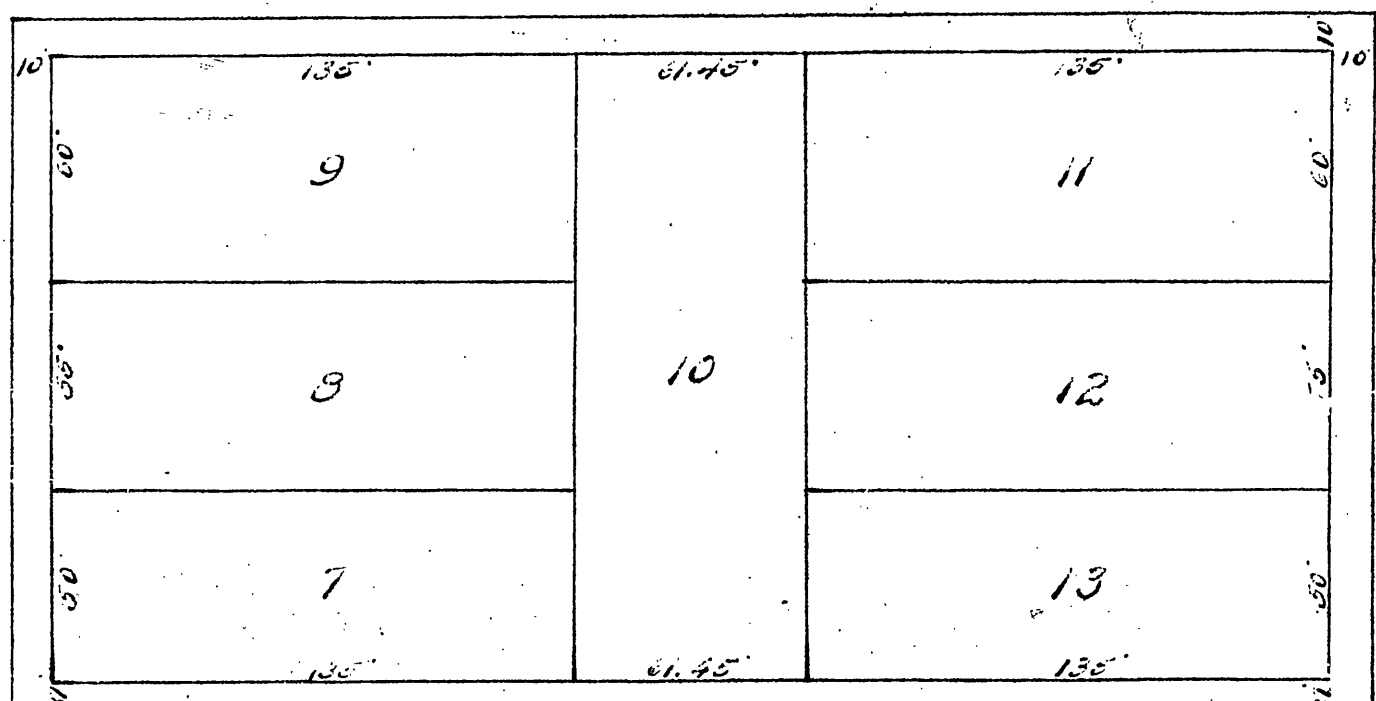


M.M. DAVIS RE. SUB 5/53

LOCUST ST.

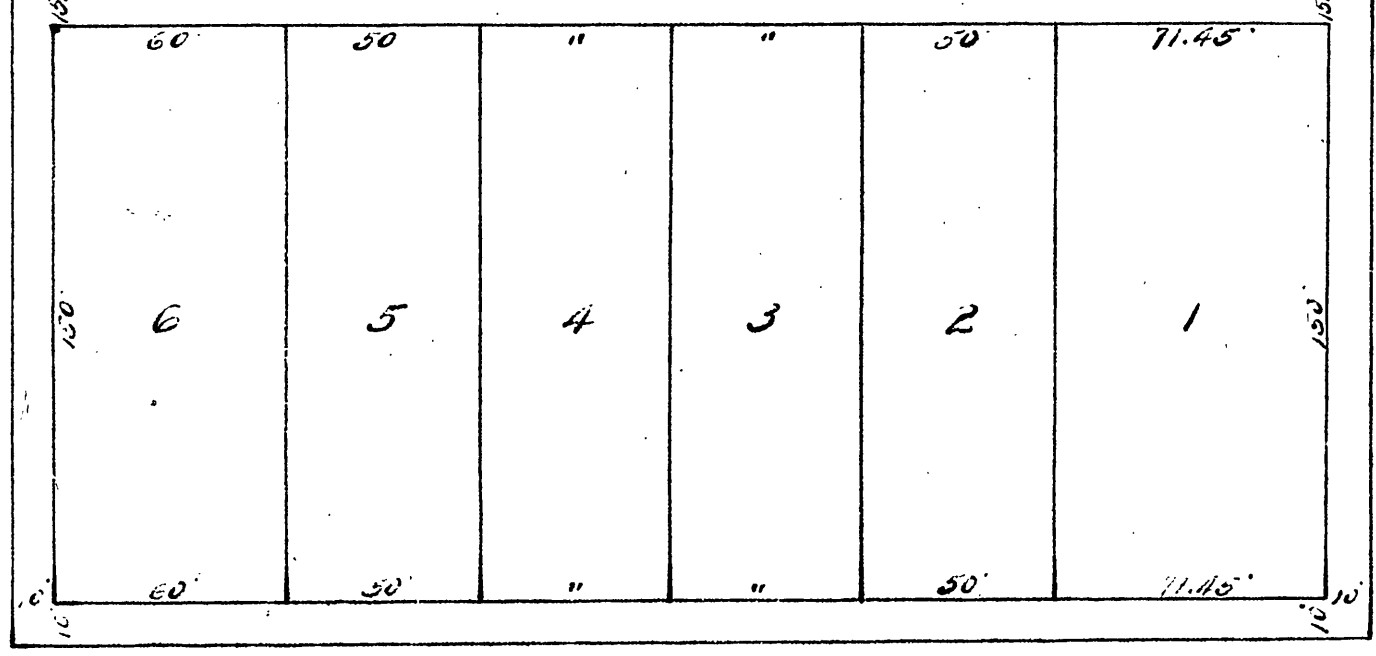
ST. 66'

ST. 60'



ST. 60'

TENTH ST. 60'



NINTH ST. 60'

WALNUT ST. 66'

ST. 66'

MAP OF  
**M.M. DAVIS RESUBDIVISION**  
 OF  
 BLOCK 9 RANGE 11 GOLDSWORTHY & HIGBIE'S  
 SURVEY OF  
**RIVERSIDE**  
 SAN BERNARDINO COUNTY CALIFORNIA  
 H. NEWMAN C.E. OCT. 1887.  
 SCALE 50 FT. = 1 IN.

Recorded at request of M.M. Davis  
 Oct. 15<sup>th</sup> 1887.

By W.G. Ware  
 Deputy.

Legare Allen  
 Co. Recorder.

M.B. 5/53

M.M. DAVIS RE-SUB.

5/53

Book 5

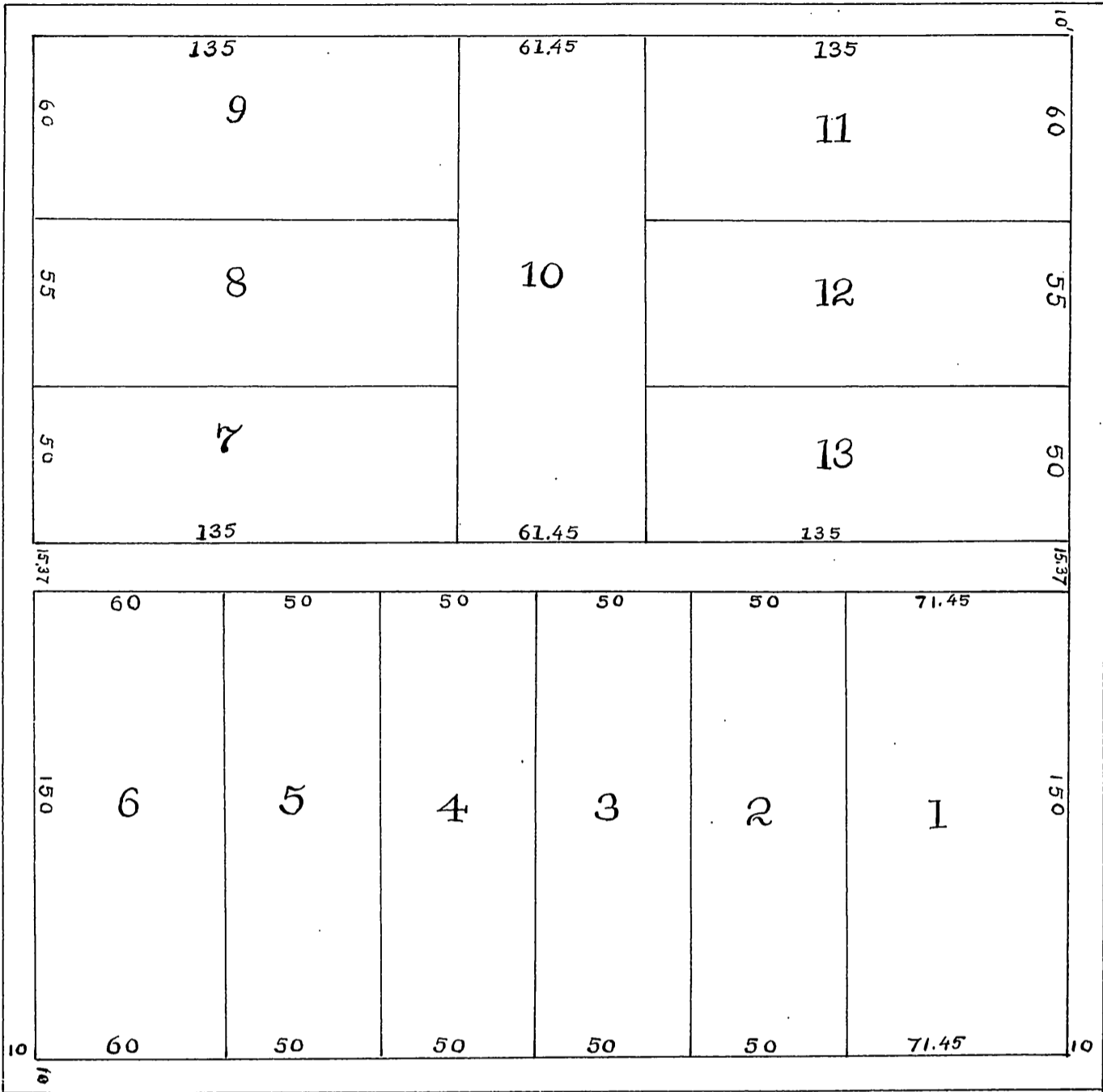
S.B. CO

1627-A

LOCUST STREET.

66

SEVENTH STREET,



66

NINTH STREET,

66

WALNUT STREET.



M. M. DAVIS RESUBDIVISION

of BLOCK 9, RANGE II, GOLDSWORTHY and HIGBIE'S SURVEY

Recorded } October 15, 1887.  
Filed }  
at Request of M. M. Davis.

OF RIVERSIDE

Book 5 of Maps, Page 53

San Bernardino County California Records San Bernardino County

H. NEWMAN, C.E. OCT. 1887.

SCALE 50' = 1 INCH

Recorded at request of M M Davis  
Oct 15<sup>th</sup> 1887



Legare Allen  
County Recorder.

By W P Leave  
Deputy

5/53

S.B. CC

M. M. DAVIS RE-SUB

1627-B