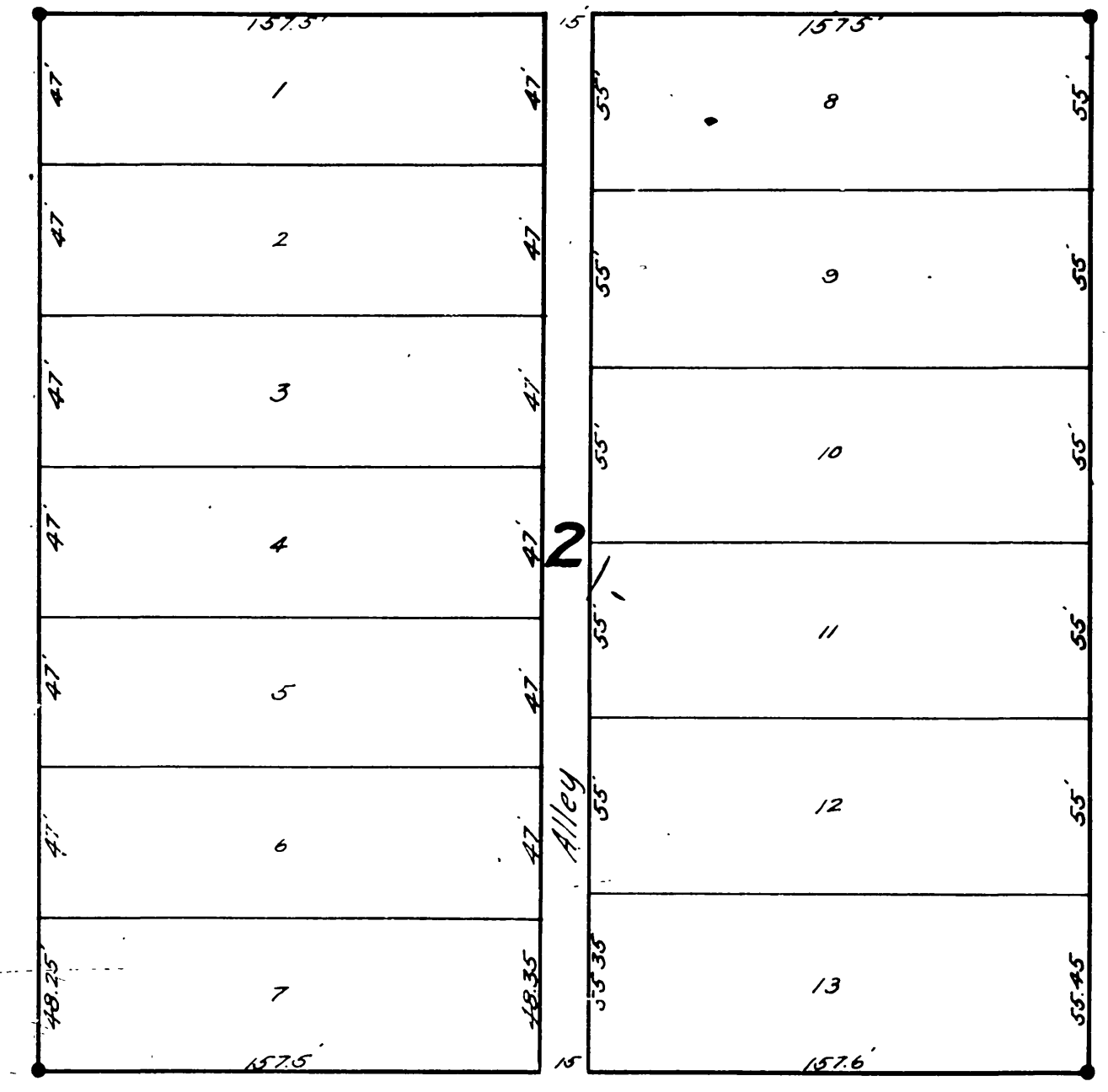


RANGE 12

SECOND ST.

ST.

ST.



MAP  
of  
**GEORGE FROST'S SUBDIVISION**  
BEING A  
**SUBDIVISION of BLOCKS 2 and 3 RANGE 12**  
RIVERSIDE, RIVERSIDE COUNTY, CALIFORNIA  
Scale 1 in = 50 ft. Nov 12, 1906

I hereby certify that this MAP OF GEORGE FROST'S SUBDIVISION is a correct representation of the survey made by me in October 1906

*E. L. Williamson C.E.*

I hereby execute and adopt this MAP OF GEORGE FROST'S SUBDIVISION as surveyed by E. L. Williamson C.E. in October 1906 to designate the different parts of land which it represents as divided into Lots and Alleys

*Elizabeth A. Frost*

State of California )  
County of Riverside ) ss

On this 13<sup>th</sup> day of November in the Year of our Lord 1906 before me Helen M. Wallace, Notary Public in and for said County of Riverside, residing therein, duly commissioned, and sworn, personally appeared Elizabeth A. Frost personally known to me, to be the person described in, and whose name is subscribed to and who executed the within instrument, and acknowledged to me that she executed the same freely and voluntarily.

IN WITNESS WHEREOF, I have hereunto set my hand and official seal at my office in Riverside, in the said County, the day and year in this Certificate first above written.

*Helen M. Wallace*  
Notary Public in and for the County of Riverside State of California

RESOLVED: That the within Map of George Frost's Subdivision be and hereby is adopted as the Official Map of George Frost's Subdivision being a subdivision of Blocks 2 and 3, Range 12, Riverside County, California.

I hereby certify that the foregoing resolution was adopted by the Board of Trustees of the City of Riverside the 13<sup>th</sup> day of November, 1906.

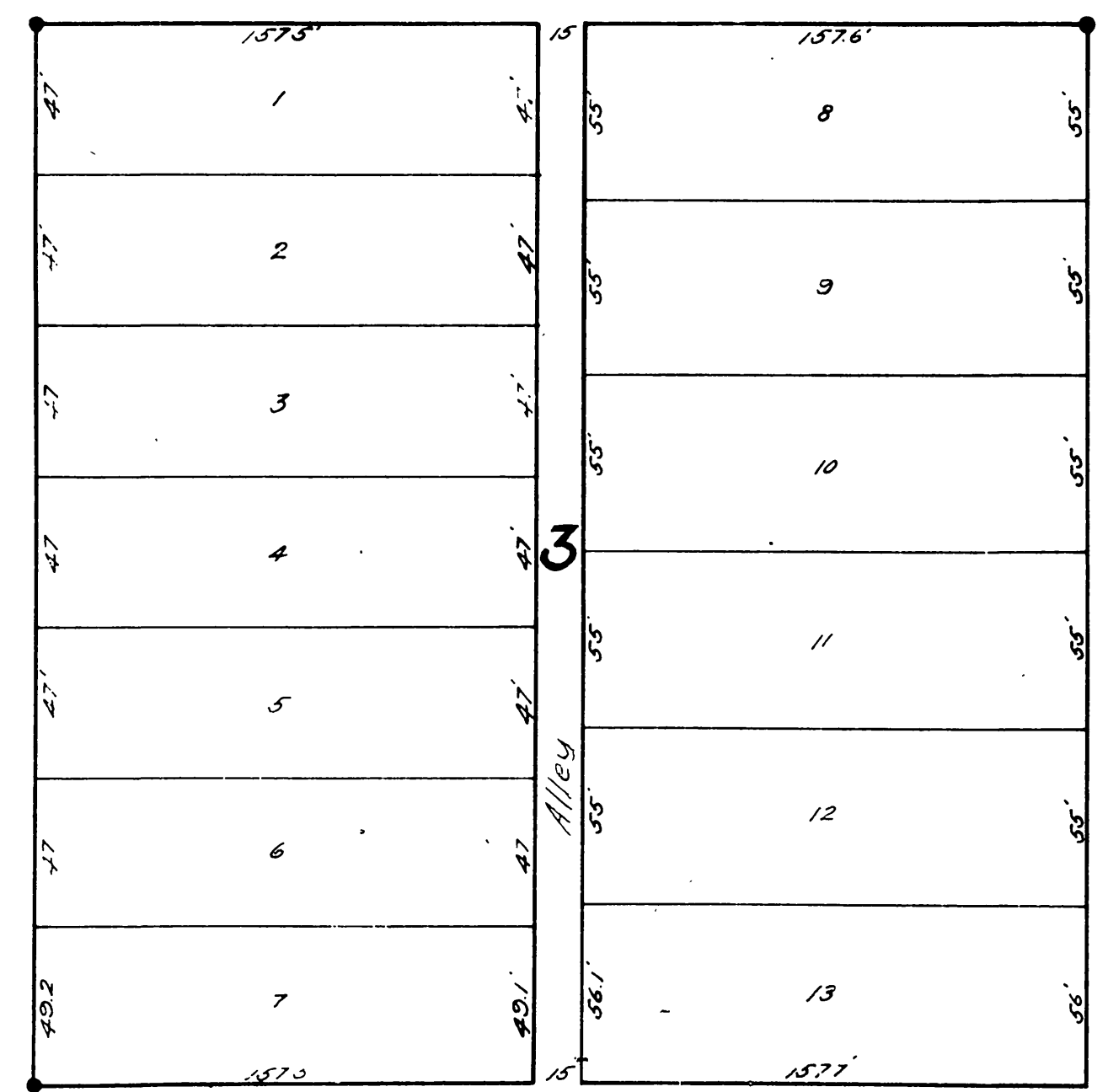
*C. V. Stubbs*  
City Clerk

Cement Points set by City

THIRD ST.

CEDAR

LOCUST



FOURTH ST.

Note:  
Points marked thus • are 2x2" Redwood Hubs set by City Engineer.