

# MAP OF A PORTION OF OLIVEWOOD CEMETERY SHOWING FLAT B

A SUBDIVISION OF A PORTION OF THE N 1/2 of the S.W. 1/4 of Sec. 35 T.2S. R.5W. S. B. M.  
April - 1907. Scale 20 ft. = 1 inch.

Execution by Trustees

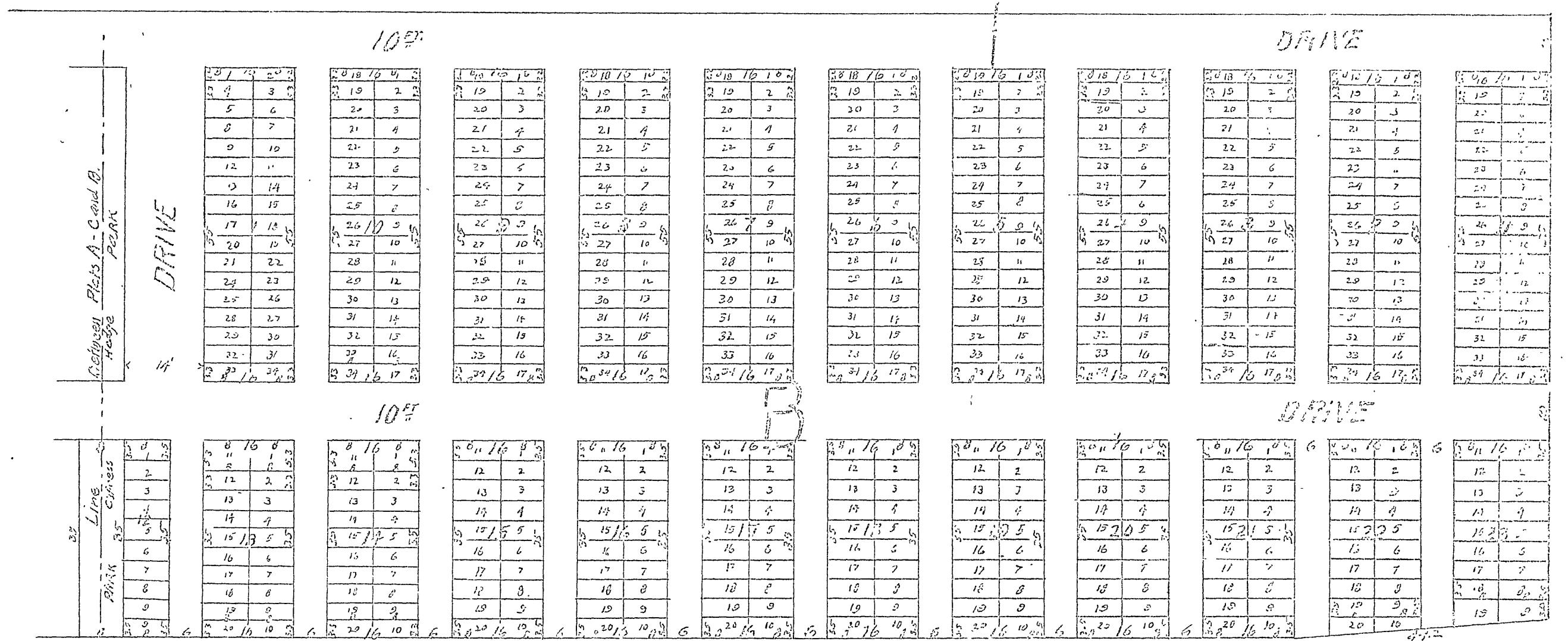
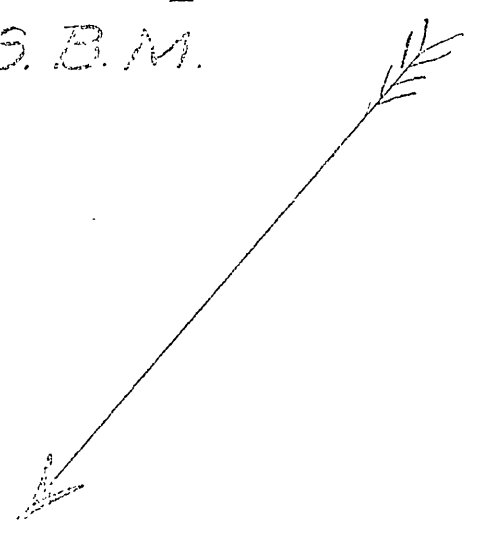
A. J. Twogood  
P. D. Cover.

Notary Certificate

Achilles Martin  
Notary.

Flat B is drawn from the original map of Olivewood Cemetery as drawn by J. W. Johnson, C.E. and has been laid by Kingsbury Seaborn, C.E. and 1/2" redwood stakes are set at all exterior boundaries of lots.

Kingsbury Seaborn  
Civil Engineer.



FILED  
OCT. 7, 1907

Book 6. pg. 11.