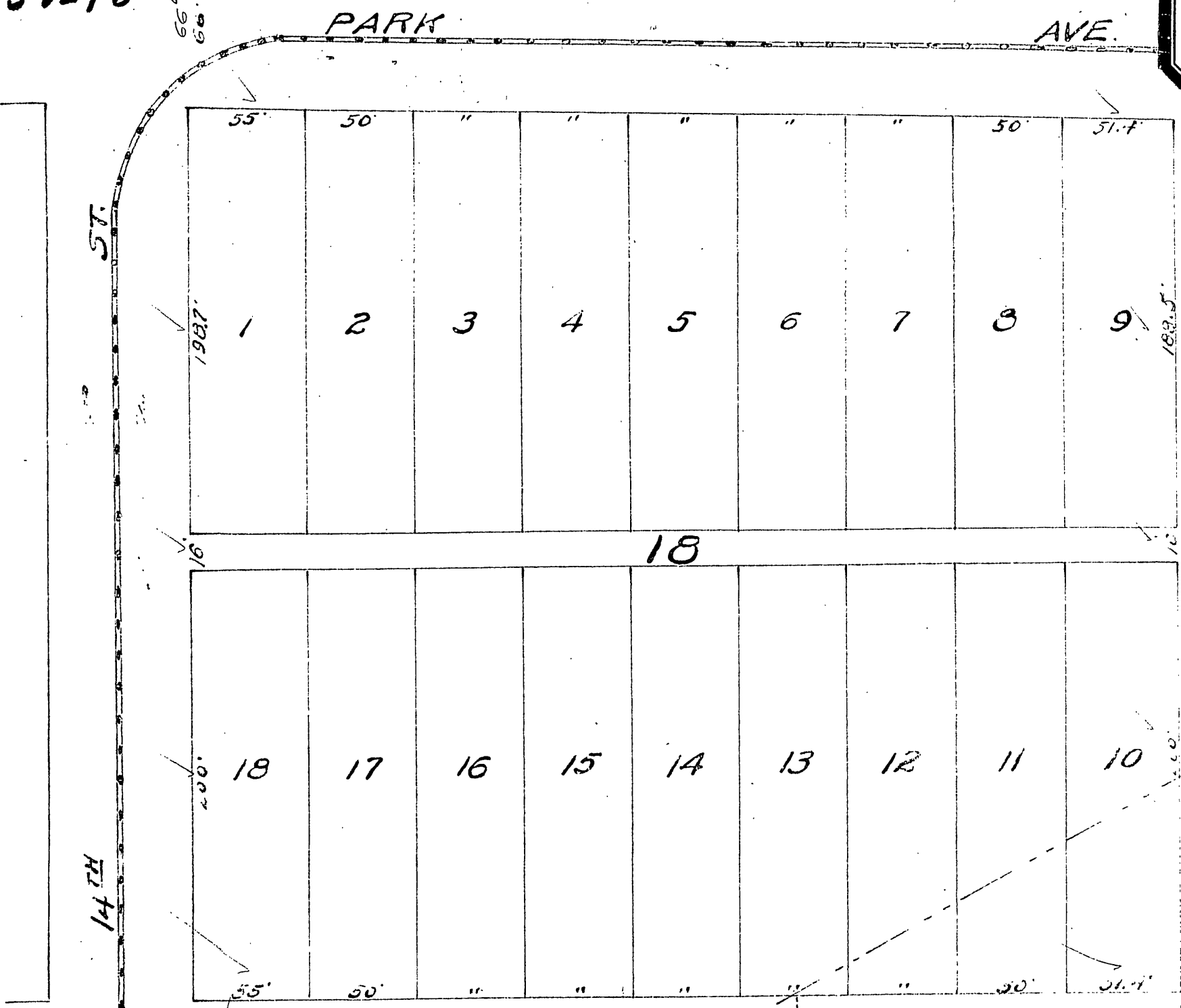


8/54 S.B. Co.

1616-A
Santa Fe
Tract.
B-8 - P54



Sec. 26 T. 25. R. 5 W.
N.W. Cor. S.E. 1/4, N.E. 1/4.

SUPPLEMENTARY
SANTA FE TRACT
RIVERSIDE CAL.

Being a subdivision of Lots 10 & 11 Division "A"
Hall's addition to Riverside, Cal, Granting
the extension of Howard Ave. and completing
Block 18 of Santa Fe Tract

R.S. LANGSWORTHY SURVEYOR
SCALE 60' = 1 IN.

Recorded at request of Santa Fe Land Co
Nov. 11th 1893 at 8:31 A.M.

By W.P. Gave
Dep.

V.S Davidson
Co. Recorder.

M.B. 8/54

SANTA FE TRACT

8/54 S.B. Co.

1616A

SANTA FE TRACT 8/54

1616-B

Perfo C

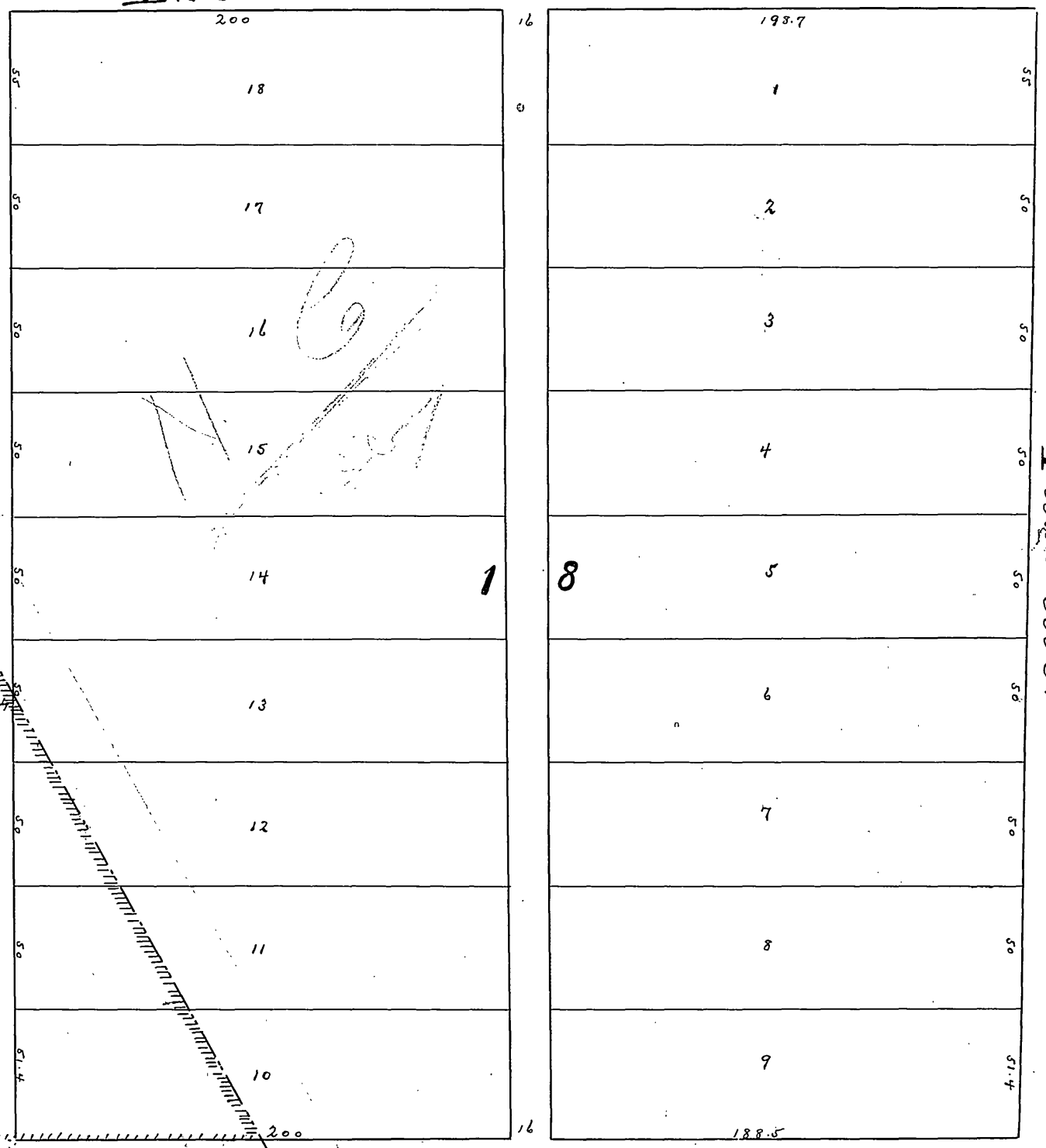
HALLS ADDITION STREET RAILROAD

E. 14th St.

St.

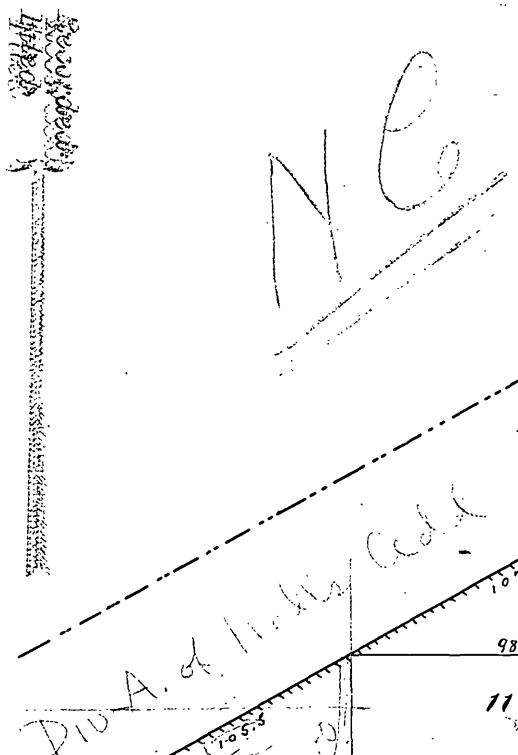
Park Ave.

Cottage St.



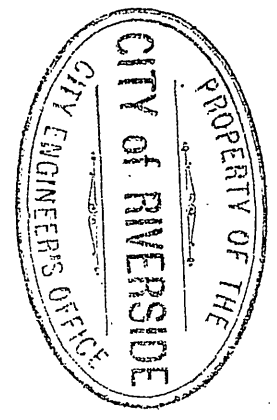
Howard Ave.

SEC. 26 T. 2. S. R. 5. W.
N.W. COR. SE 1/4. NE 1/4.



Supplementary Map
of the Santa Fe Tract
Scale 60' = 1"

at Request of
Book 8 of Maps, Page 54
Records San Bernardino County



8-54
Book 4 Page 8

SANTA FE TRACT 8/54 S.B.C. 1616-B

203