

ORIGINAL

**LA SIERRA GARDENS**  
 BEING A SUBDIVISION OF A PORTION OF  
**TRACT N<sup>o</sup> 2 LA SIERRA HEIGHTS**  
 RECORDED IN MAP BOOK 7 PAGE 66 RECORDS OF RIVERSIDE CO CALIF.  
 ALSO A PORTION OF  
**LANDS OF RIVERSIDE LAND AND IRRIGATING COMPANY**  
 RECORDED IN MAP BOOK 1 PAGE 70 RECORDS OF SAN BERNARDINO COUNTY CALIF.  
 ALSO A PORTION OF  
**SECTIONS 13, 14 & 15 TWP. 3 S., R. 6 W., S. B. B. & M**  
 ON FILE IN MAP BOOK 6 PAGE 70 RECORDS  
 RIVERSIDE COUNTY

*R. C. Russell*

No. \_\_\_\_\_ We are \_\_\_\_\_  
 No. \_\_\_\_\_ We are \_\_\_\_\_  
 No. \_\_\_\_\_ We are \_\_\_\_\_  
 Avenues and Streets

Bearings used on this map are based on the bearing of the center line of Lot U of Tract N<sup>o</sup> 2 La Sierra Heights M.B. 7 Page 66, which is S33° 58' 15" E.

Set 3"x3"x3" white stakes at all lot corners, except those lots in township as shown on sheet one at which lot corners I set 2"x2" pine stakes.

Acreage is computed to center of streets adjoining.

W. S. President

*W. S. President*

RESOLVED: That the within Map be and hereby is adopted as the Official Map of LA Sierra Gardens and that the avenues and streets as shown on said map are hereby rejected as public streets with the exception of Holden Ave and those portions of Pierce and Folk Streets as originally plotted on map of R. L. Calana's, and that the County Clerk is hereby authorized and directed to attest said Map by signing his name thereto as County Clerk for and in behalf of the County and to affix the seal of said County thereto.  
 I hereby certify that the foregoing resolution was adopted by the Board of Supervisors of the County of Riverside this 7<sup>th</sup> day of April 1924.

*W. H. Clayton*  
 County Clerk  
*Jack A. Ross*  
 Deputy County Clerk

STATE OF CALIFORNIA  
 COUNTY OF RIVERSIDE  
 2422 Main  
*J. E. Hall*  
 President  
*E. W. Bond*  
 Secretary  
*W. S. President*  
*W. S. President*

I hereby certify that there are no liens for unpaid taxes against any portion of the subdivision as shown by this Map except taxes now assessed but not yet payable.

*F. E. Raymond*  
 County Auditor  
 Dated April 2<sup>nd</sup> 1924

I hereby certify that a bond has been filed with and accepted by the Board of Supervisors guaranteeing the payment of taxes now a lien but not yet payable as required by Chapter 306 Acts 1913.

*W. S. Clark*  
 County Clerk  
*Jack A. Ross*  
 Deputy County Clerk  
 Dated April 7<sup>th</sup> 1924

Approved this 3<sup>rd</sup> day of April 1924

*W. S. Clark*  
County Surveyor

*H. W. Dinsmore*  
 filed  
 Fee \$5.00

Approved this \_\_\_ day of \_\_\_ 1924

County Assessor

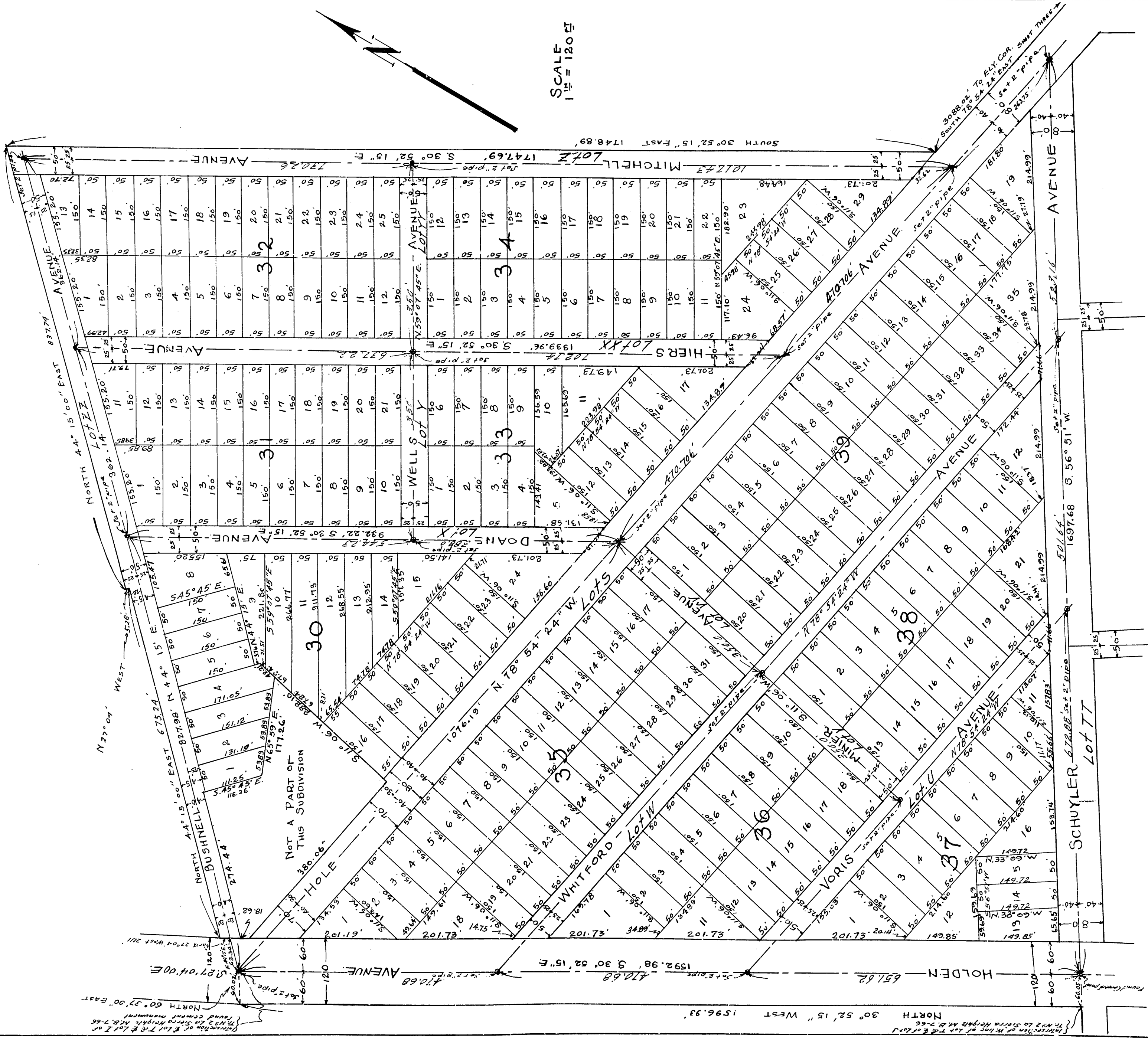
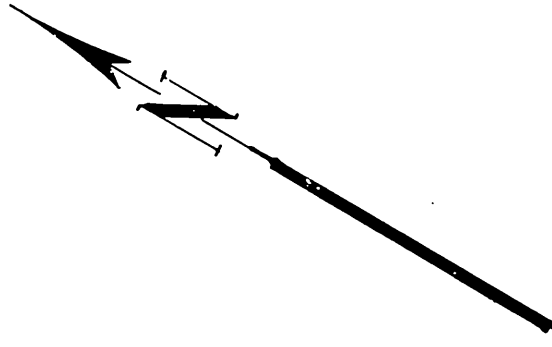
Sheet Nine

MB 11/42

LA SIERRA GARDENS.

ORIGINAL

SCALE  
1" = 120 FT



CONTINUED ON SHEET TWO.

44

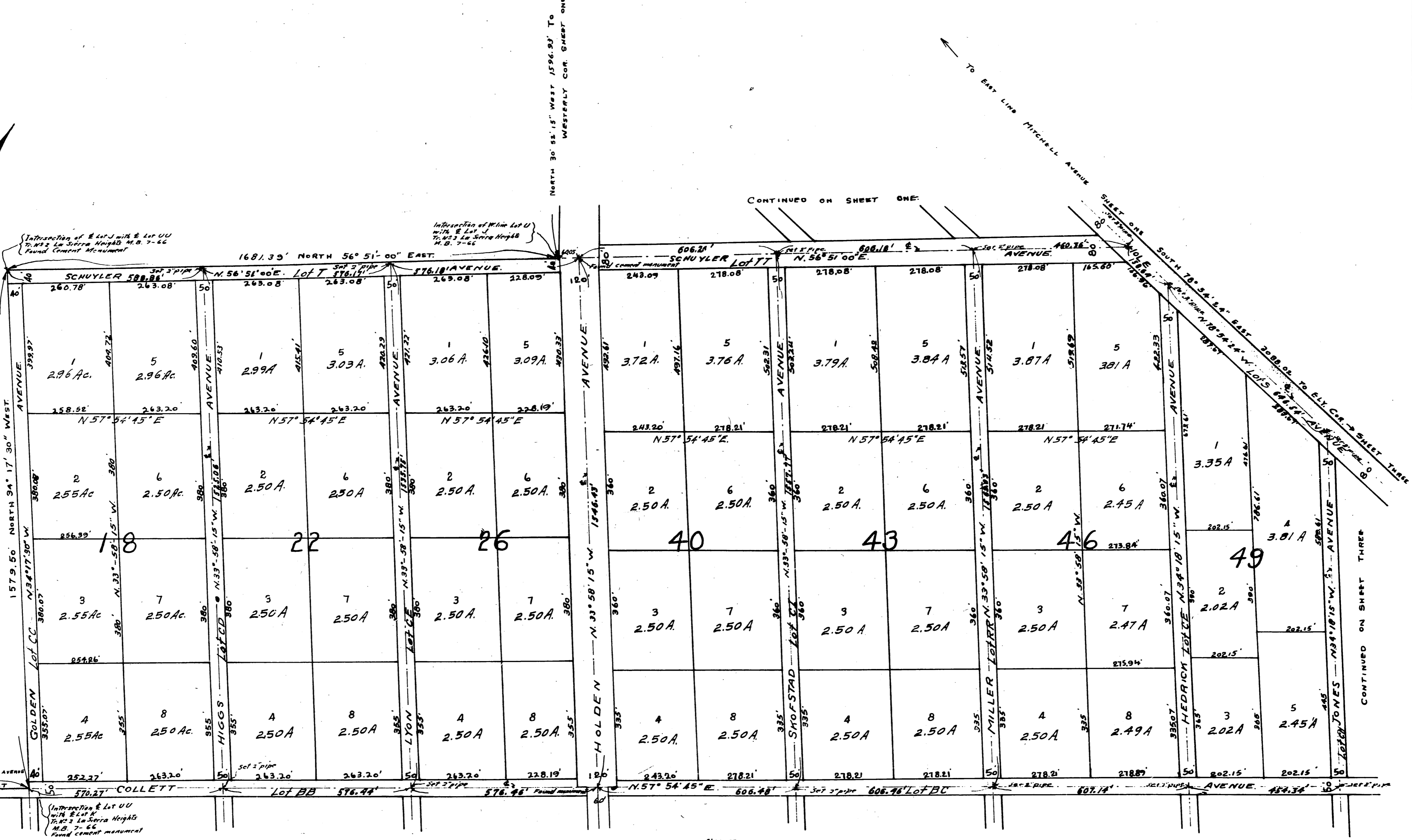
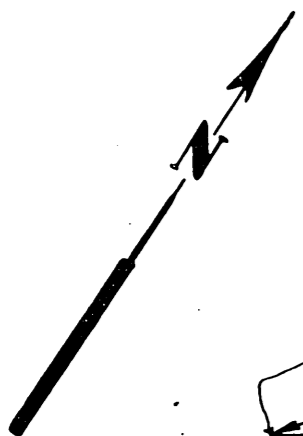
4

ORIGINAL

SHEET TWO

# LA SIERRA GARDENS.

SCALE 1" = 200'



CONTINUED ON SHEET THREE AND FIVE.

CONTINUED ON SHEET THREE

MB 11 / 44

M.B. 11 / 44

44

# LA SIERRA GARDENS.

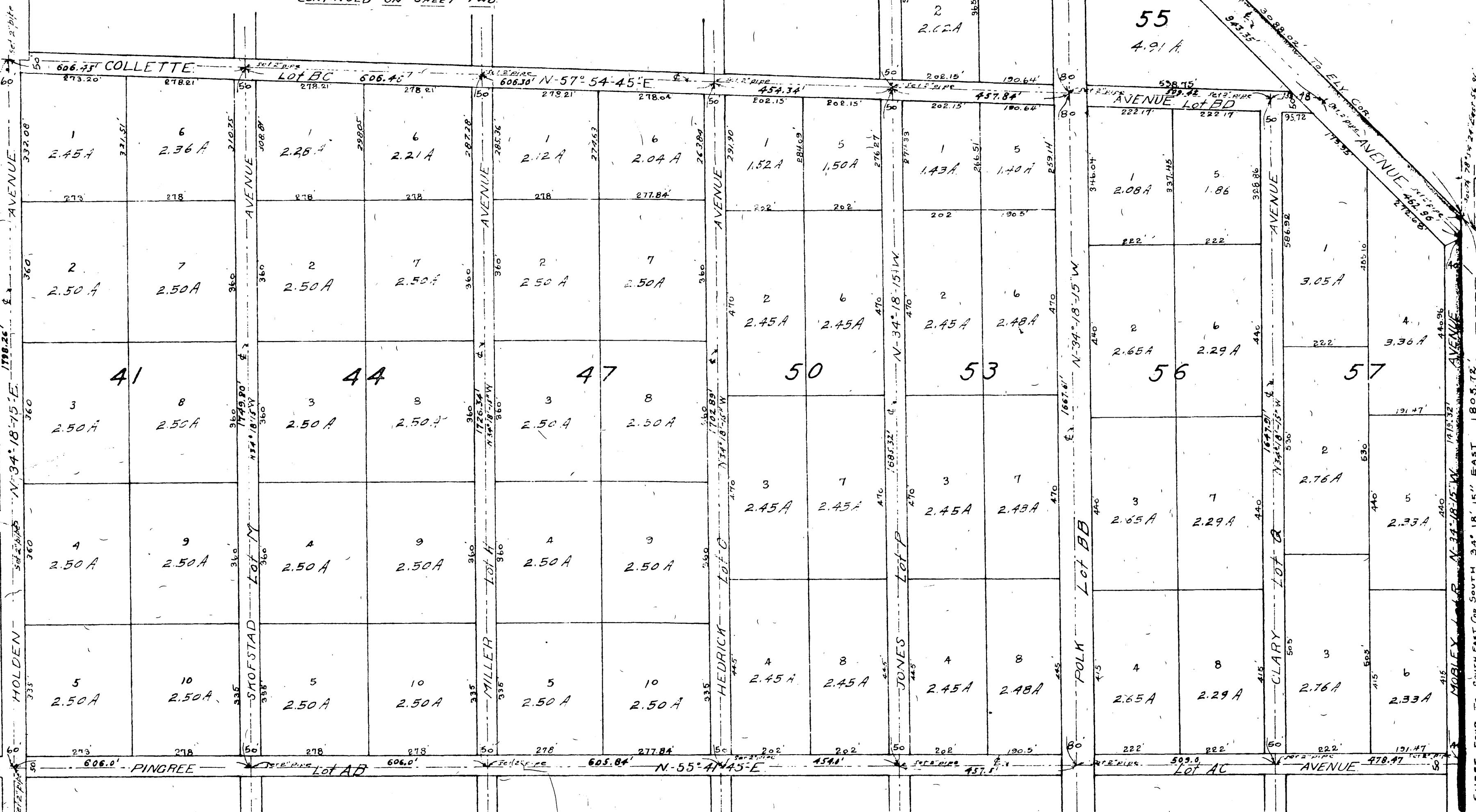
SCALE H.N. = 200 FT.



CONTINUED ON SHEET TWO

CONTINUED ON SHEET FIVE

CONTINUED FROM SHEET FOUR



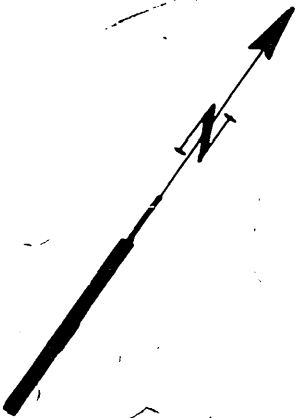
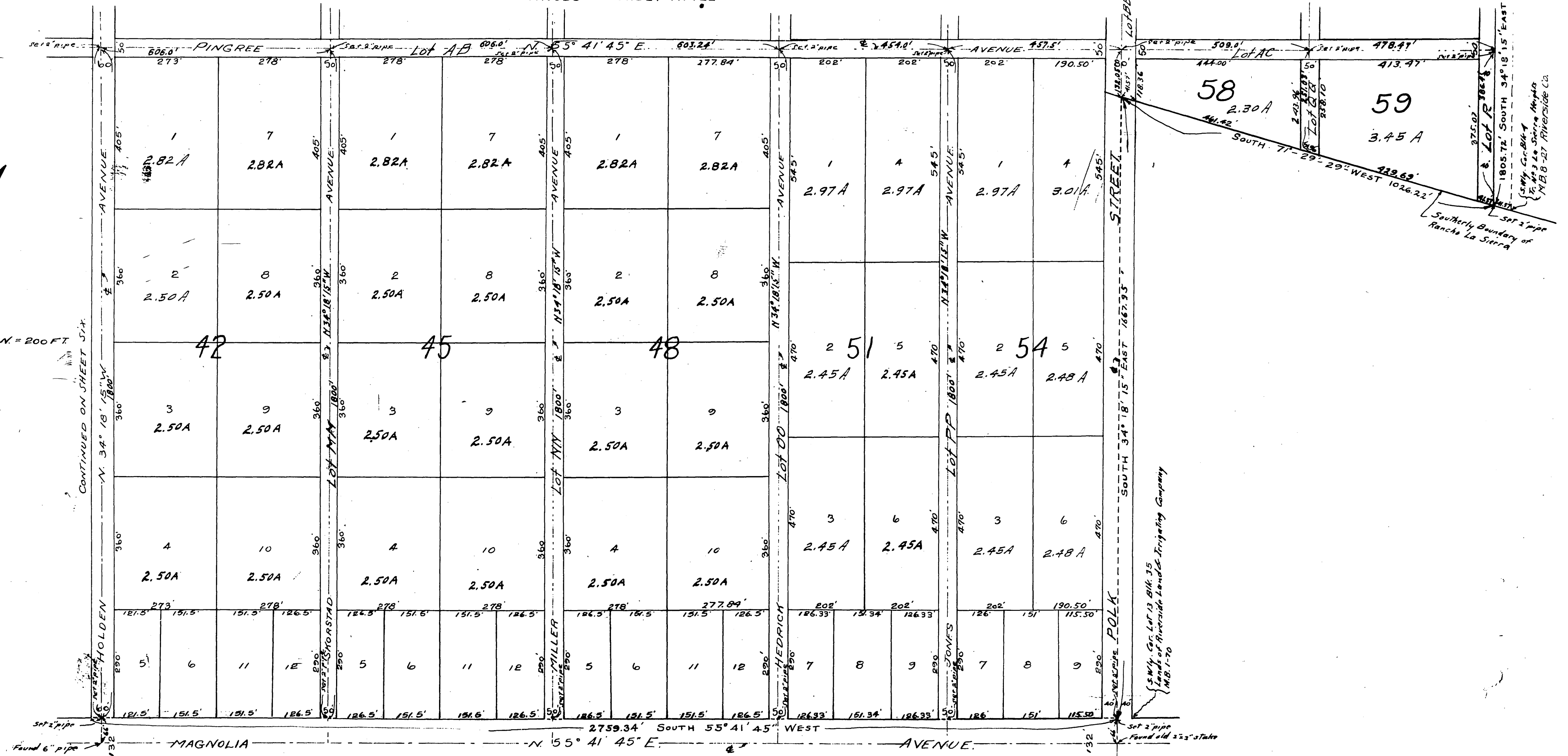
(SW 1/4 Cor. Blk 7  
T. 10 N. R. 3 E. La Sierra Heights  
M.B. 27 Riverside, Co.

SHEET FOUR TO SOUTH EAST COR SOUTH 34° 18' 15" EAST 1805.72'

ORIGINAL

# LA SIERRA GARDENS.

CONTINUED ON SHEET THREE



SCALE 1 IN. = 200 FT.

CONTINUED ON SHEET 514

S.W. 1/4 Sec. 13 Blk. 35  
 Lands of Riverside Land & Irrigation Company  
 (M.B. 1-70)

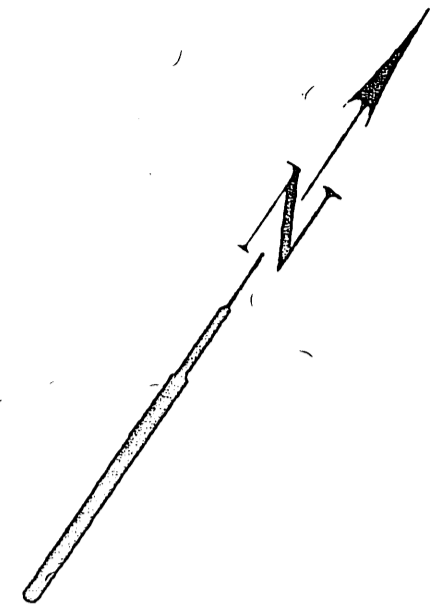
Southerly Boundary of  
 Rancho La Sierra

TO EASTERLY COR SHEET THREE

47  
MB 11/47

# LA SIERRA GARDENS.

ORIGINAL



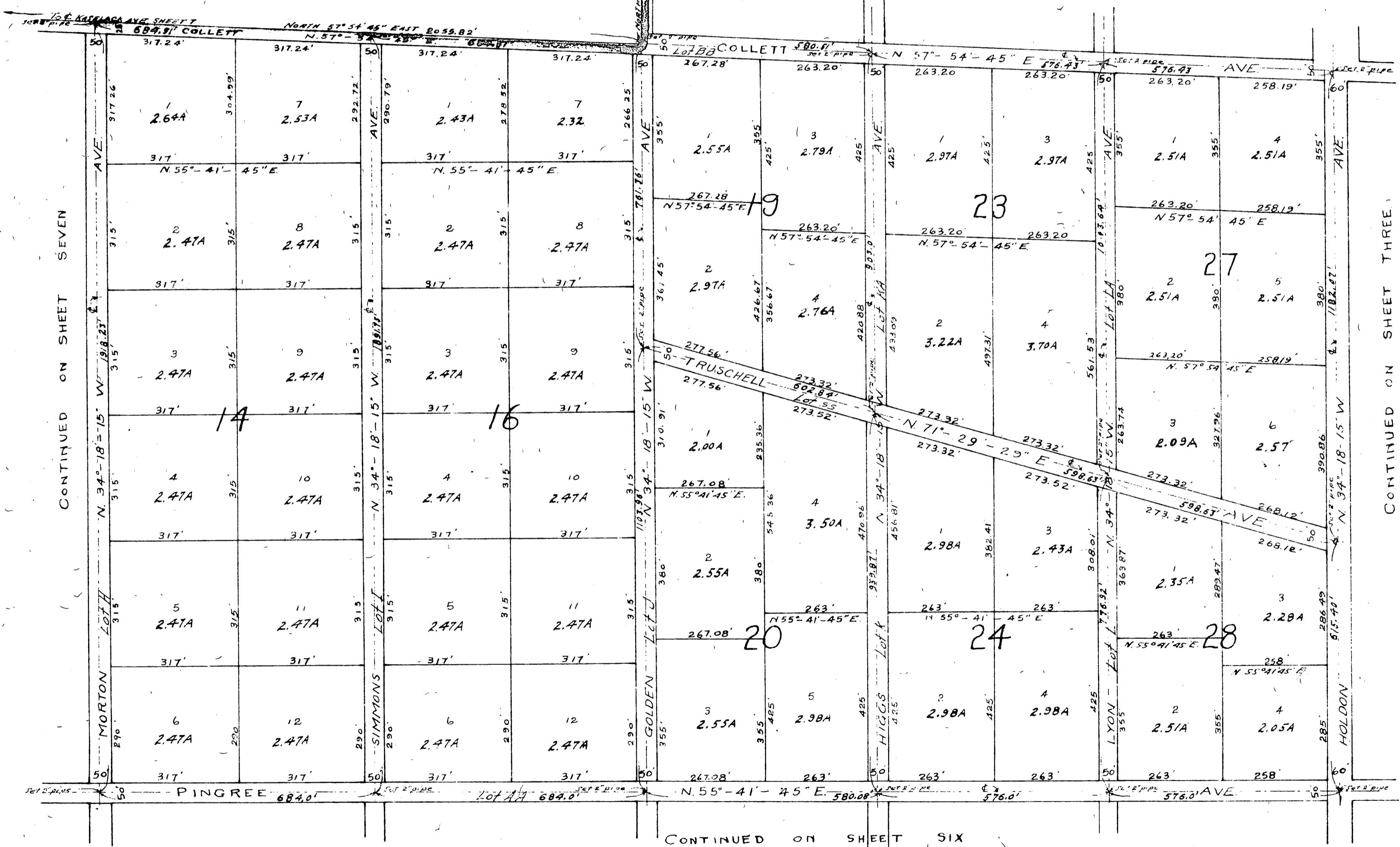
SCALE: 1" = 200'

CONTINUED ON SHEET TWO

CONTINUED ON SHEET SEVEN

CONTINUED ON SHEET THREE

CONTINUED ON SHEET SIX



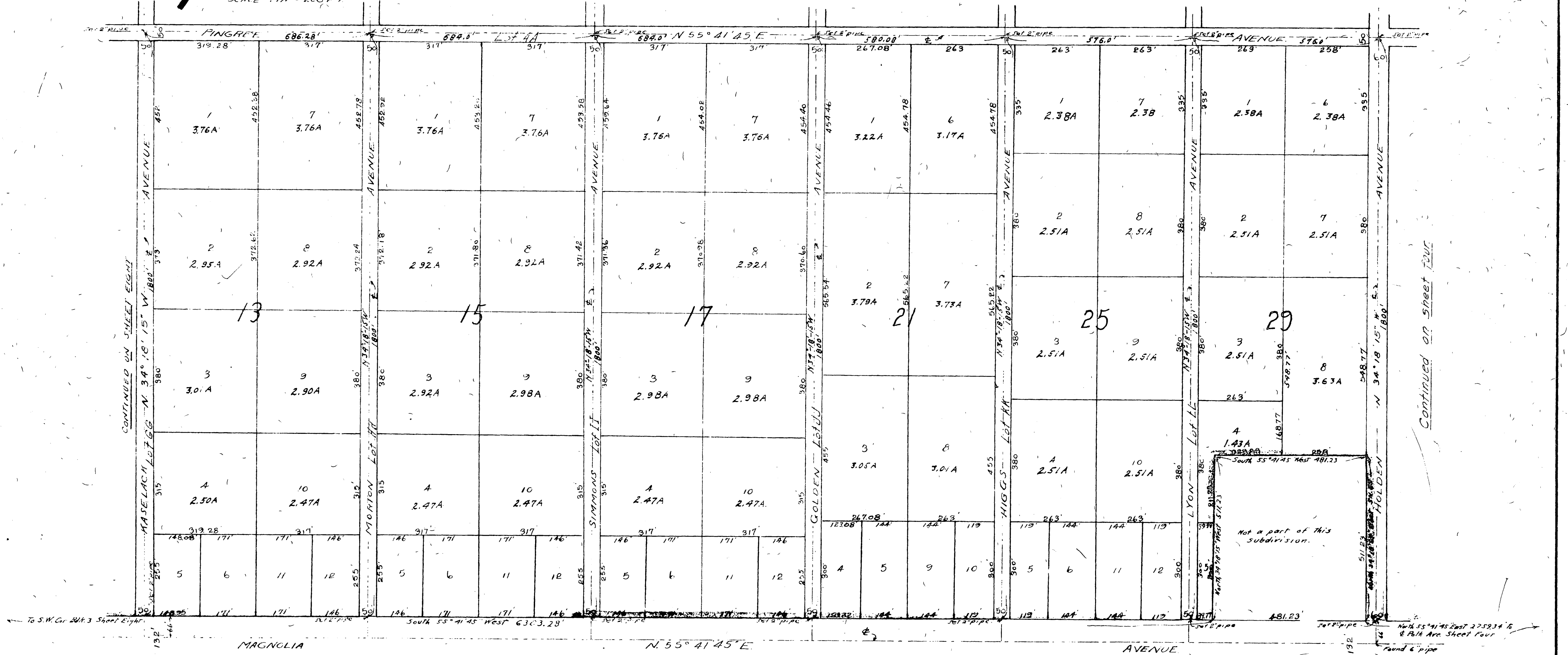
MB 11/47

# LA SIERRA GARDENS.



SCALE 1 IN = 200 FT

CONTINUED ON SHEET FIVE



6/11/49

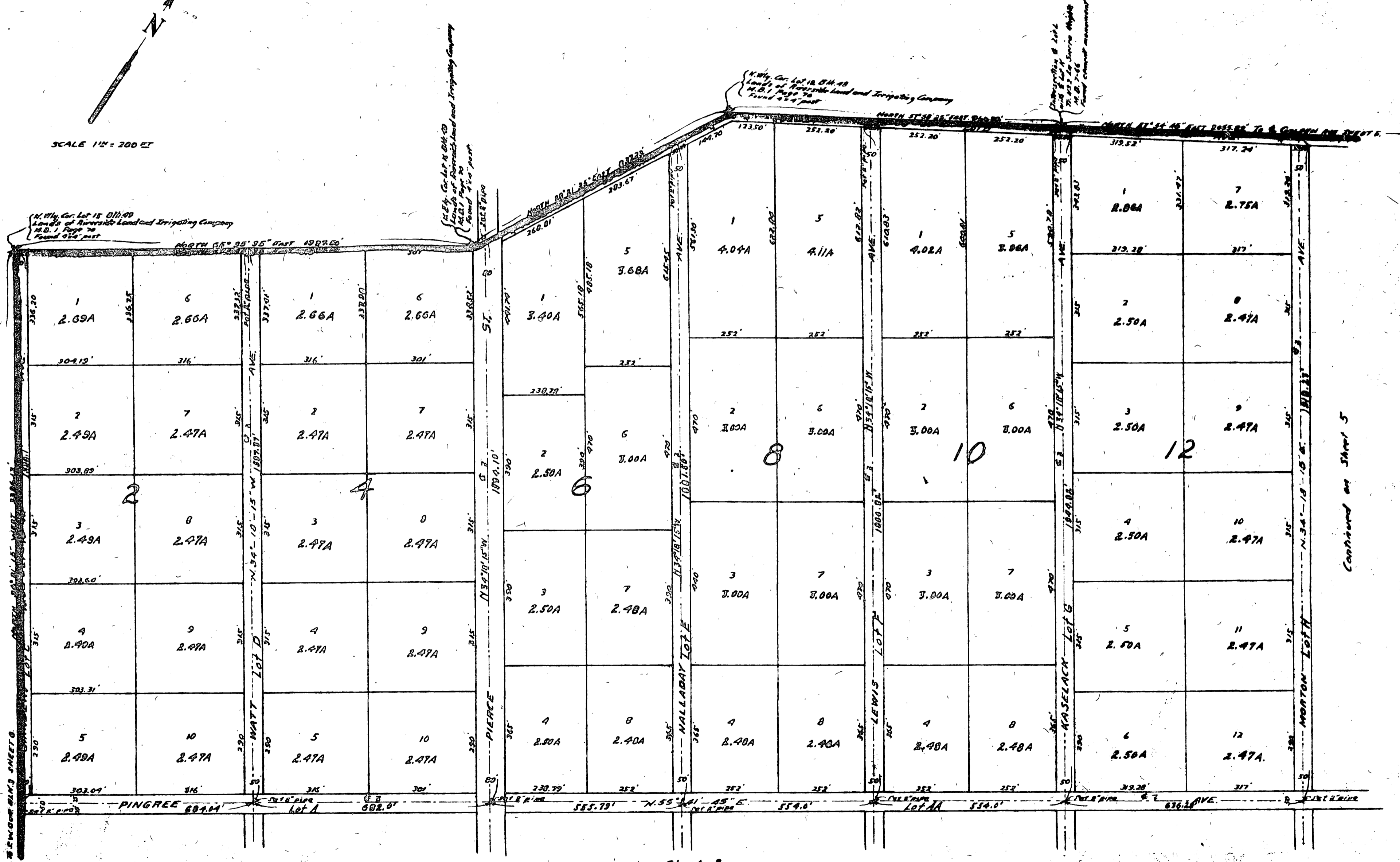
ORIGINAL

SHEET SEVEN

# LA SIERRA GARDENS



SCALE 1" = 200 FT



Continued on Sheet 8

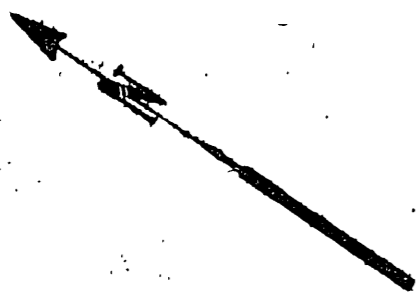
Continued on Sheet 5



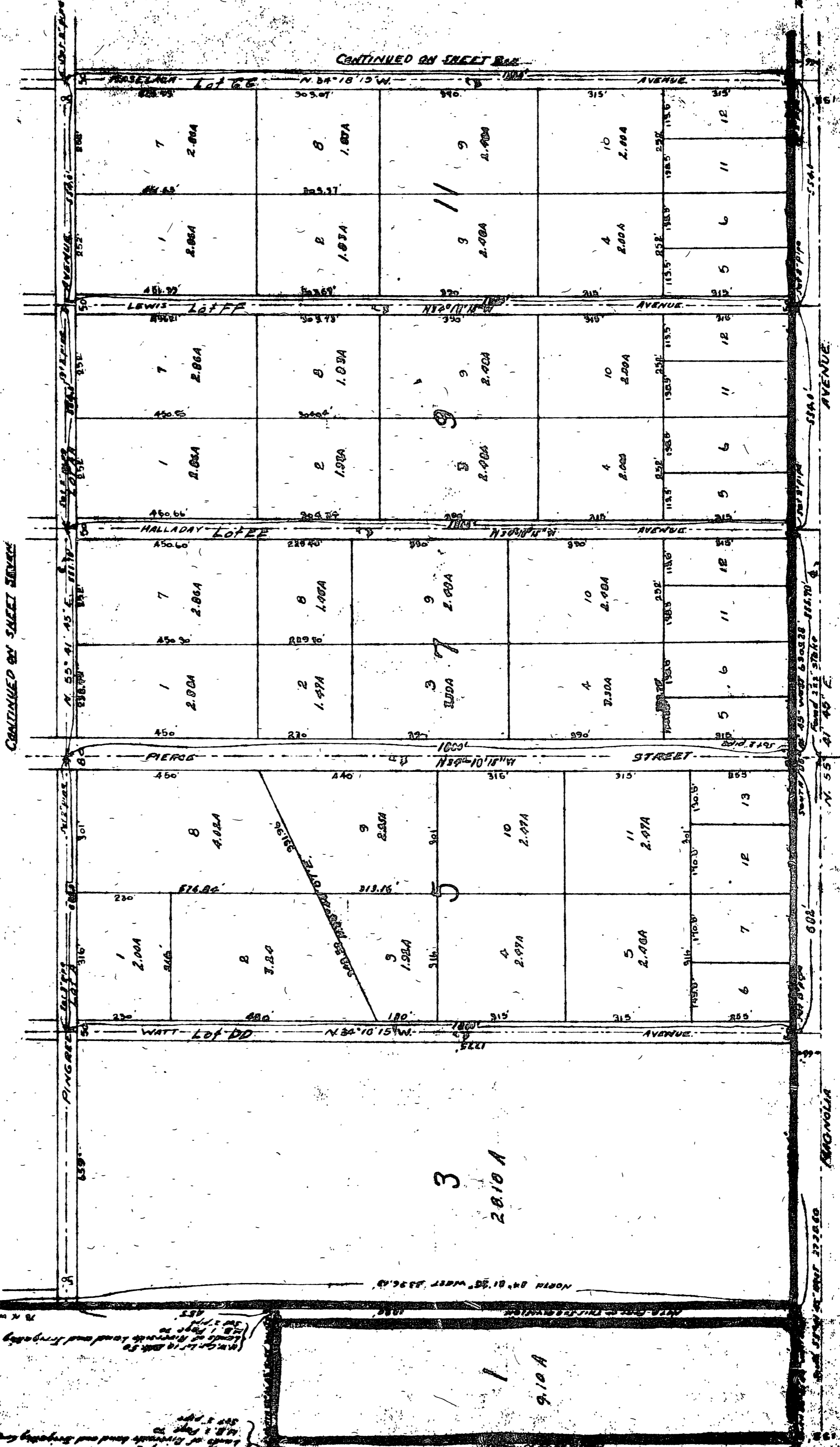
# LA TIERRA GARDENS

ORIGINAL

CONTINUED ON SHEET 8A



SCALE 1/4" = 200 FT.



(1) Lot 1, 2, 3, 4, 5, 6, 7, 8, 9, 10, 11, 12, 13, 14, 15, 16, 17, 18, 19, 20, 21, 22, 23, 24, 25, 26, 27, 28, 29, 30, 31, 32, 33, 34, 35, 36, 37, 38, 39, 40, 41, 42, 43, 44, 45, 46, 47, 48, 49, 50, 51, 52, 53, 54, 55, 56, 57, 58, 59, 60, 61, 62, 63, 64, 65, 66, 67, 68, 69, 70, 71, 72, 73, 74, 75, 76, 77, 78, 79, 80, 81, 82, 83, 84, 85, 86, 87, 88, 89, 90, 91, 92, 93, 94, 95, 96, 97, 98, 99, 100, 101, 102, 103, 104, 105, 106, 107, 108, 109, 110, 111, 112, 113, 114, 115, 116, 117, 118, 119, 120, 121, 122, 123, 124, 125, 126, 127, 128, 129, 130, 131, 132, 133, 134, 135, 136, 137, 138, 139, 140, 141, 142, 143, 144, 145, 146, 147, 148, 149, 150, 151, 152, 153, 154, 155, 156, 157, 158, 159, 160, 161, 162, 163, 164, 165, 166, 167, 168, 169, 170, 171, 172, 173, 174, 175, 176, 177, 178, 179, 180, 181, 182, 183, 184, 185, 186, 187, 188, 189, 190, 191, 192, 193, 194, 195, 196, 197, 198, 199, 200, 201, 202, 203, 204, 205, 206, 207, 208, 209, 210, 211, 212, 213, 214, 215, 216, 217, 218, 219, 220, 221, 222, 223, 224, 225, 226, 227, 228, 229, 230, 231, 232, 233, 234, 235, 236, 237, 238, 239, 240, 241, 242, 243, 244, 245, 246, 247, 248, 249, 250, 251, 252, 253, 254, 255, 256, 257, 258, 259, 260, 261, 262, 263, 264, 265, 266, 267, 268, 269, 270, 271, 272, 273, 274, 275, 276, 277, 278, 279, 280, 281, 282, 283, 284, 285, 286, 287, 288, 289, 290, 291, 292, 293, 294, 295, 296, 297, 298, 299, 300, 301, 302, 303, 304, 305, 306, 307, 308, 309, 310, 311, 312, 313, 314, 315, 316, 317, 318, 319, 320, 321, 322, 323, 324, 325, 326, 327, 328, 329, 330, 331, 332, 333, 334, 335, 336, 337, 338, 339, 340, 341, 342, 343, 344, 345, 346, 347, 348, 349, 350, 351, 352, 353, 354, 355, 356, 357, 358, 359, 360, 361, 362, 363, 364, 365, 366, 367, 368, 369, 370, 371, 372, 373, 374, 375, 376, 377, 378, 379, 380, 381, 382, 383, 384, 385, 386, 387, 388, 389, 390, 391, 392, 393, 394, 395, 396, 397, 398, 399, 400, 401, 402, 403, 404, 405, 406, 407, 408, 409, 410, 411, 412, 413, 414, 415, 416, 417, 418, 419, 420, 421, 422, 423, 424, 425, 426, 427, 428, 429, 430, 431, 432, 433, 434, 435, 436, 437, 438, 439, 440, 441, 442, 443, 444, 445, 446, 447, 448, 449, 450, 451, 452, 453, 454, 455, 456, 457, 458, 459, 460, 461, 462, 463, 464, 465, 466, 467, 468, 469, 470, 471, 472, 473, 474, 475, 476, 477, 478, 479, 480, 481, 482, 483, 484, 485, 486, 487, 488, 489, 490, 491, 492, 493, 494, 495, 496, 497, 498, 499, 500, 501, 502, 503, 504, 505, 506, 507, 508, 509, 510, 511, 512, 513, 514, 515, 516, 517, 518, 519, 520, 521, 522, 523, 524, 525, 526, 527, 528, 529, 530, 531, 532, 533, 534, 535, 536, 537, 538, 539, 540, 541, 542, 543, 544, 545, 546, 547, 548, 549, 550, 551, 552, 553, 554, 555, 556, 557, 558, 559, 560, 561, 562, 563, 564, 565, 566, 567, 568, 569, 570, 571, 572, 573, 574, 575, 576, 577, 578, 579, 580, 581, 582, 583, 584, 585, 586, 587, 588, 589, 590, 591, 592, 593, 594, 595, 596, 597, 598, 599, 600, 601, 602, 603, 604, 605, 606, 607, 608, 609, 610, 611, 612, 613, 614, 615, 616, 617, 618, 619, 620, 621, 622, 623, 624, 625, 626, 627, 628, 629, 630, 631, 632, 633, 634, 635, 636, 637, 638, 639, 640, 641, 642, 643, 644, 645, 646, 647, 648, 649, 650, 651, 652, 653, 654, 655, 656, 657, 658, 659, 660, 661, 662, 663, 664, 665, 666, 667, 668, 669, 670, 671, 672, 673, 674, 675, 676, 677, 678, 679, 680, 681, 682, 683, 684, 685, 686, 687, 688, 689, 690, 691, 692, 693, 694, 695, 696, 697, 698, 699, 700, 701, 702, 703, 704, 705, 706, 707, 708, 709, 710, 711, 712, 713, 714, 715, 716, 717, 718, 719, 720, 721, 722, 723, 724, 725, 726, 727, 728, 729, 730, 731, 732, 733, 734, 735, 736, 737, 738, 739, 740, 741, 742, 743, 744, 745, 746, 747, 748, 749, 750, 751, 752, 753, 754, 755, 756, 757, 758, 759, 760, 761, 762, 763, 764, 765, 766, 767, 768, 769, 770, 771, 772, 773, 774, 775, 776, 777, 778, 779, 780, 781, 782, 783, 784, 785, 786, 787, 788, 789, 790, 791, 792, 793, 794, 795, 796, 797, 798, 799, 800, 801, 802, 803, 804, 805, 806, 807, 808, 809, 810, 811, 812, 813, 814, 815, 816, 817, 818, 819, 820, 821, 822, 823, 824, 825, 826, 827, 828, 829, 830, 831, 832, 833, 834, 835, 836, 837, 838, 839, 840, 841, 842, 843, 844, 845, 846, 847, 848, 849, 850, 851, 852, 853, 854, 855, 856, 857, 858, 859, 860, 861, 862, 863, 864, 865, 866, 867, 868, 869, 870, 871, 872, 873, 874, 875, 876, 877, 878, 879, 880, 881, 882, 883, 884, 885, 886, 887, 888, 889, 890, 891, 892, 893, 894, 895, 896, 897, 898, 899, 900, 901, 902, 903, 904, 905, 906, 907, 908, 909, 910, 911, 912, 913, 914, 915, 916, 917, 918, 919, 920, 921, 922, 923, 924, 925, 926, 927, 928, 929, 930, 931, 932, 933, 934, 935, 936, 937, 938, 939, 940, 941, 942, 943, 944, 945, 946, 947, 948, 949, 950, 951, 952, 953, 954, 955, 956, 957, 958, 959, 960, 961, 962, 963, 964, 965, 966, 967, 968, 969, 970, 971, 972, 973, 974, 975, 976, 977, 978, 979, 980, 981, 982, 983, 984, 985, 986, 987, 988, 989, 990, 991, 992, 993, 994, 995, 996, 997, 998, 999, 1000.