

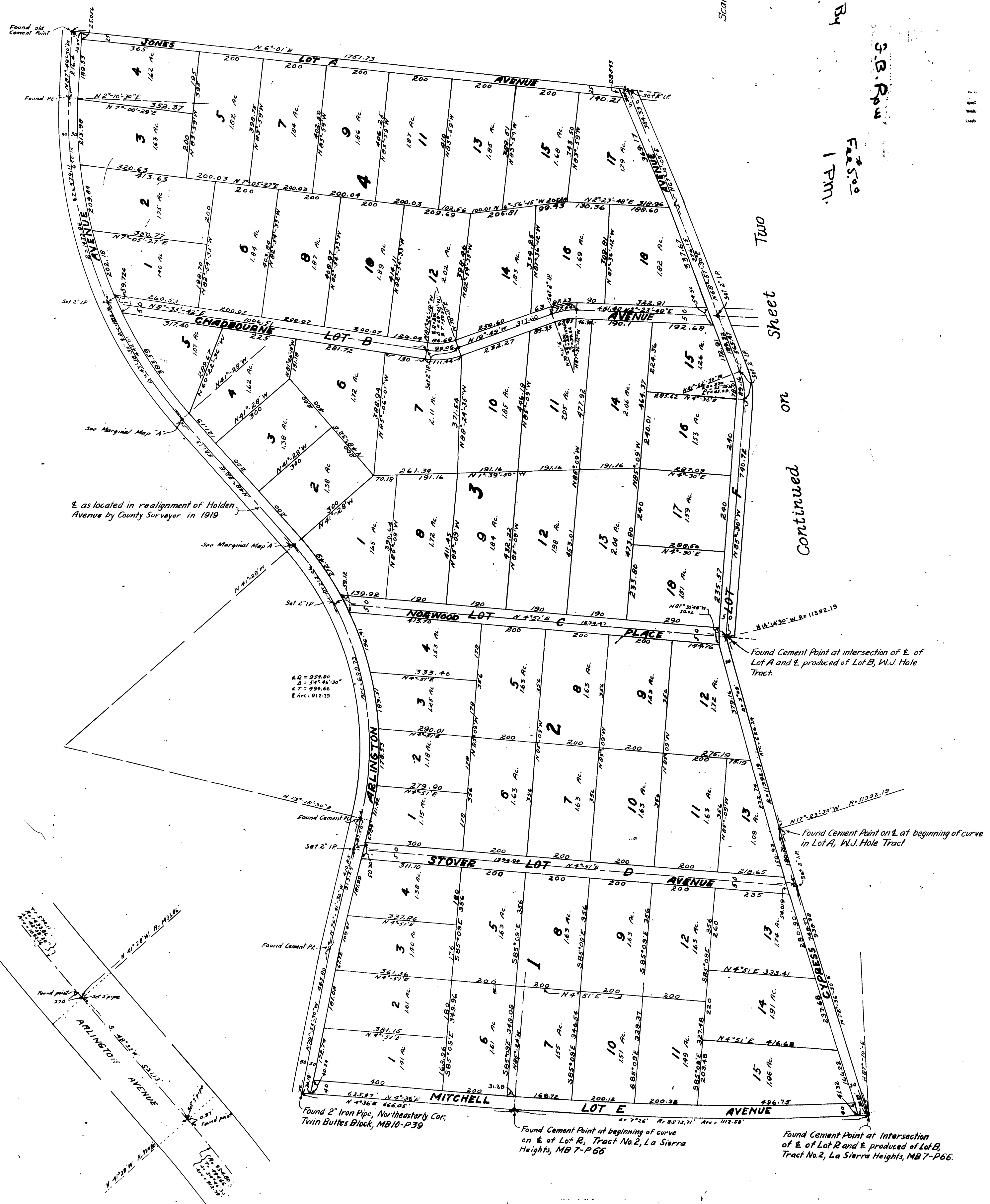
CHADBOURNE HEIGHTS

Being a subdivision of a portion of block 10, Tract No. 2, La Sierra Heights recorded in Map Book 7, page 66, Records of Riverside County, State of California, also lots 1 and 2 and portions of lots 13, 14, 15 and 16, of the W.J. Hole Tract recorded in Map Book 10 pages 12-15, Records of Riverside County, State of California.

Scale 1" = 200'

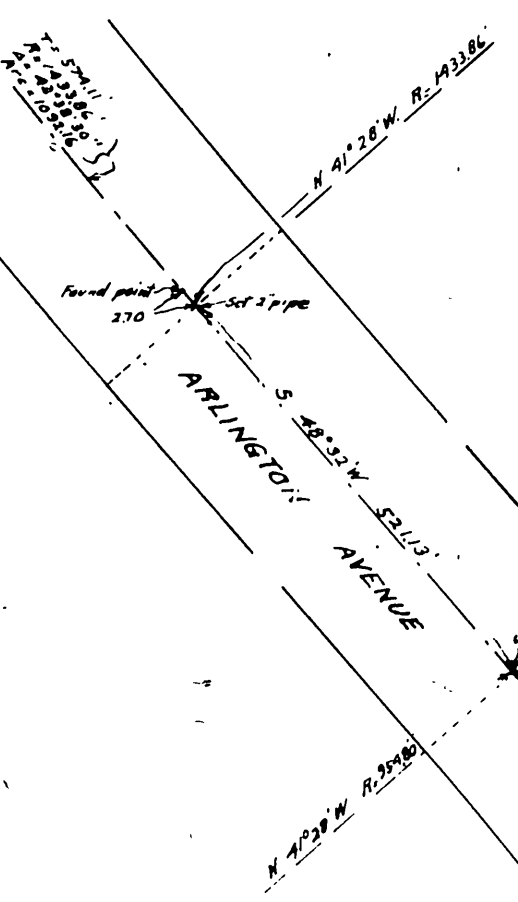
By
S.B. Row
Fasto
1 P.M.

Two
Sheet
on
Continued



as located in realignment of Holden Avenue by County Surveyor in 1919

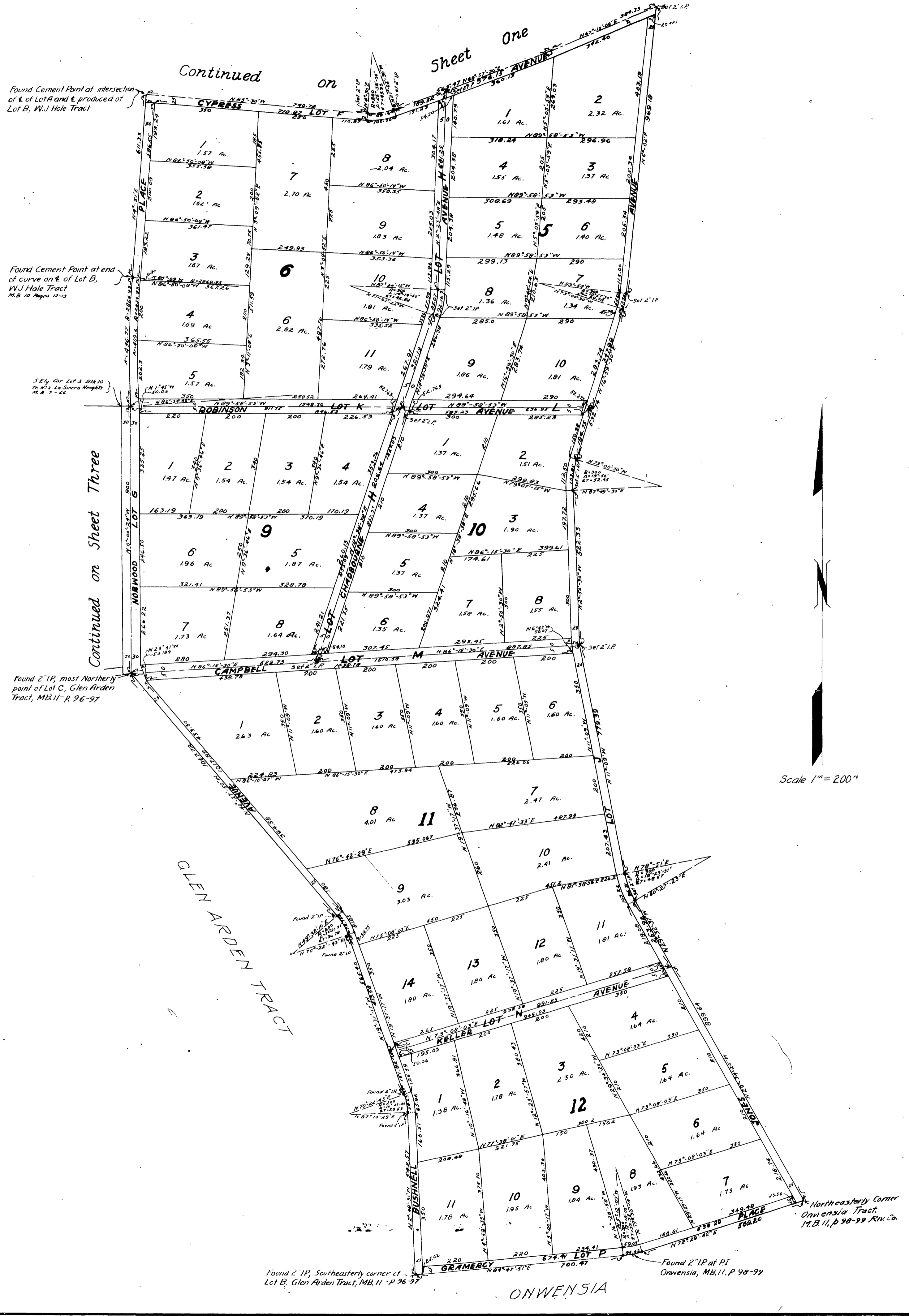
42 = 999.00
43 = 347.46
47 = 499.66
48 = 912.75



MARGINAL MAP A
SCALE 1/4" = 50'

Book 1102

CHADBOURNE HEIGHTS



Continued on Sheet Three

Sheet One

Scale 1" = 200'

Block 110 E

CHADBOURNE HEIGHTS

The bearing of Bushnell Avenue (N40°27'50"W) as shown on the map of Glen Arden Tract, Map Book 11 pp. 96 was taken as the basis of the bearings shown on this map.

Acres shown on this map is net and does not include the street adjoining.

Dimensions shown on this map are in feet and decimals thereof.

3"x3"x3" white stakes are set at all lot corners.

Approved this 8th day of September, 1924

A.C. Fulmer
County Surveyor

Approved this 5th day of September, 1924

B. J. Dayley
County Assessor
by *J. H. [unclear]*
County Assessor

I HEREBY CERTIFY THAT I AM A LICENSED SURVEYOR AND THAT THIS MAP CONSISTING OF SHEET 3 CORRECTLY REPRESENTS A SURVEY MADE UNDER MY SUPERVISION IN July 1924 AND THAT ALL MONUMENTS SHOWN HEREON ACTUALLY EXIST AND THEIR POSITIONS ACCURATELY SHOWN
M. J. [unclear]

RESOLVED: That the within map be, and hereby is, adopted as the official map of CHADBOURNE HEIGHTS and that the avenues and places as shown on said map are hereby rejected as public streets, and that the County Clerk is hereby authorized, and directed to attest said map by signing his name thereto as County Clerk for and in behalf of the County, and to affix the seal of said County thereto.

I hereby certify that the foregoing resolution was adopted by the Board of Supervisors of the County of Riverside this 8th day of Sept. 1924

P. J. Clayton
County Clerk
John A. [unclear]
Deputy County Clerk

I hereby certify that a bond has been filed with, and accepted by the Board of Supervisors guaranteeing the payment of taxes now alien but not yet payable, as required by Chapter 306, Acts 1913.

Dated Sept. 8th 1924

P. J. Clayton
County Clerk
John A. [unclear]
Deputy County Clerk

I hereby certify that there are no liens for unpaid taxes against any portion of the Subdivision as shown by this map except taxes now assessed but not yet payable.

Dated Sept. 20th 1924

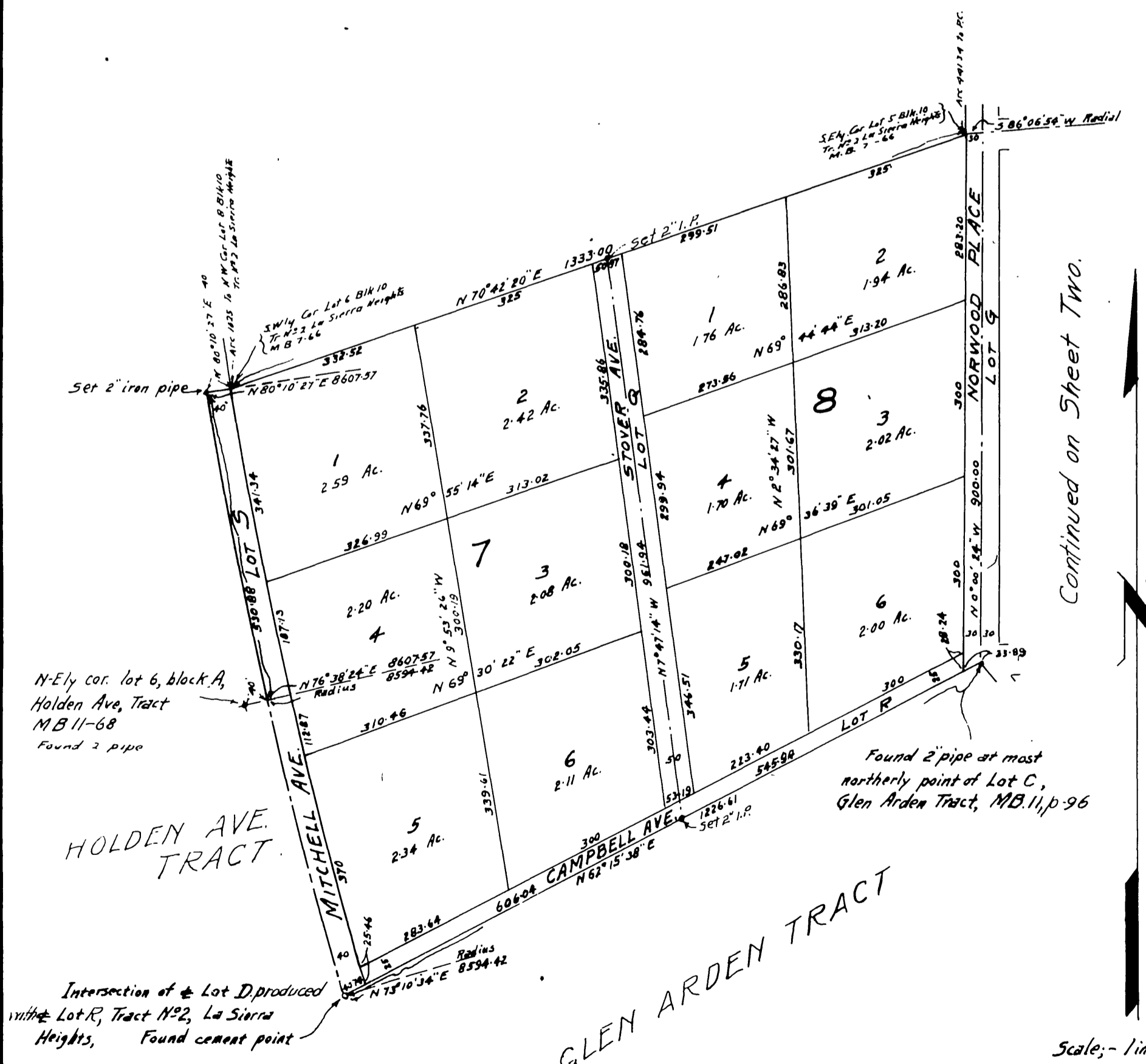
H. E. [unclear]
County Auditor

WE HEREBY CERTIFY THAT WE ARE THE OWNERS OF OR INTERESTED IN THE LAND INCLUDED WITHIN THE SUBDIVISION SHOWN ON THE ANNEXED MAP AND THAT WE ARE THE ONLY PERSONS WHOSE CONSENT IS NECESSARY TO PASS A CLEAR TITLE TO SAID LAND AND WE CONSENT TO THE MAKING OF SAID MAP AND SUBDIVISION AS SHOWN WITHIN THE COLORED BORDER LINE.

WE HEREBY DEDICATE TO THE PUBLIC USE ALL THE Avenues and Places SHOWN WITHIN SAID SUBDIVISION

SECURITY TRUST AND SAVINGS BANK
BY *[Signature]* PRESIDENT
[Signature] ASSISTANT SECRETARY

STATE OF CALIFORNIA
County of Los Angeles
On this 4th day of August, 1924, in the year one thousand, nine hundred and twenty-four, before me, *Florence S. Tiffany*, a Notary Public in and for County of Los Angeles, State of California, personally appeared *J. E. Hotch*, known to me to be the Vice President and *E. H. Havershak*, known to me to be Assistant Secretary of the Security Trust and Savings Bank, the corporation which executed the within instrument, and I caused to be read to each of them the contents of said instrument, and they acknowledged to me that they executed the same for the purposes and to the effect therein expressed.



Continued on Sheet Two.

Scale: 1 in. = 200 ft.

Book 1107